



PRODUCT DATA & SPECIFICATIONS

Bulletin T40-TXC-PDS
Part # 1107225

TX New "C" Generation
Condensing Units

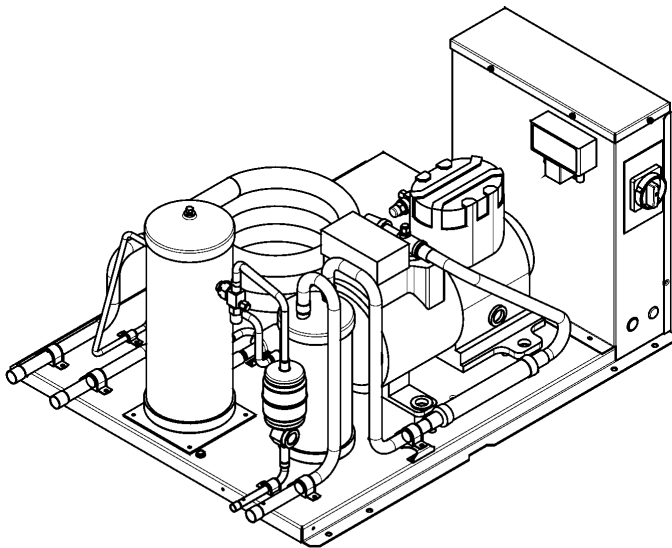
60
Hz

Indoor Water Cooled Coaxial
Hermetic, Scroll and
Semi-Hermetic
Condensing Units

**1/2 to 6 HP -
High, Medium and Low
Temperature Refrigeration**

PRODUCT SUPPORT
web: t-rp.com/tx
email: rcu-wccu@t-rp.com
call: 1-844-893-3222 x523

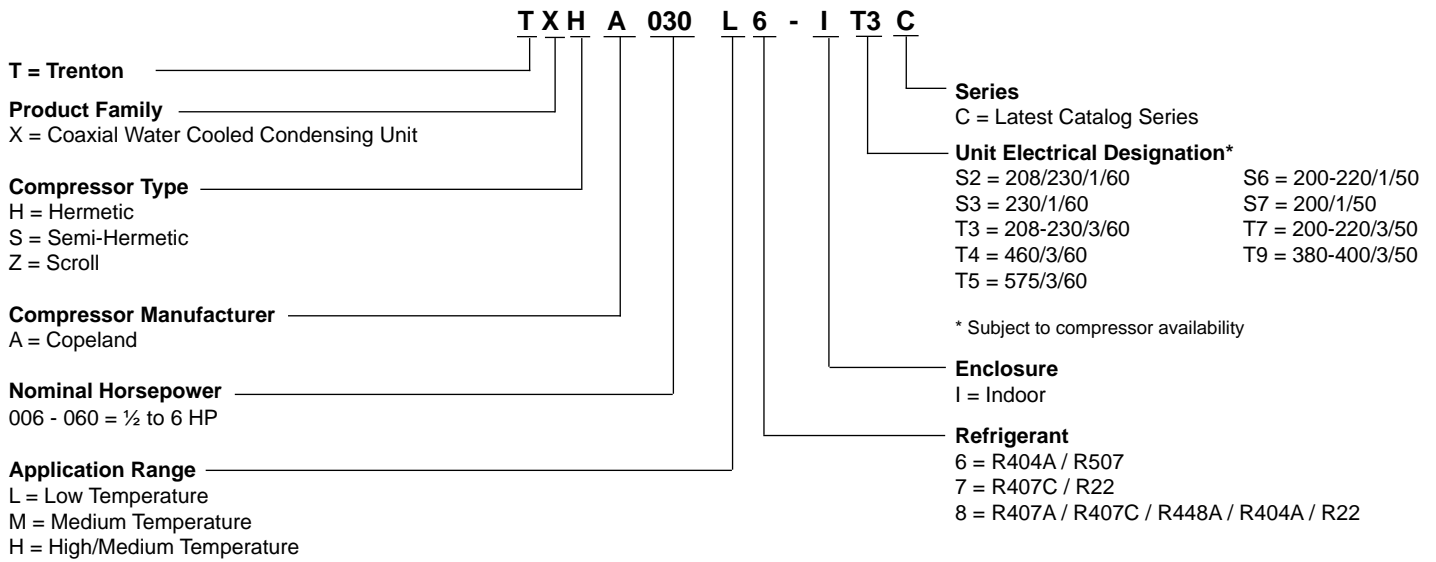
scan:



CONTENTS

	Page
Nomenclature.....	2
Features and Options.....	2
Capacity Data (Imperial and <i>Metric</i>).....	3 - 14
Electrical Data.....	15 - 18
Dimensional Data.....	19 - 20
Specifications.....	21 - 22
Wiring Diagrams.....	23 - 25
Product Support Resources.....	BACK

NOMENCLATURE



STANDARD FEATURES

- Painted electrical control box with compressor contactor and fused control circuit
- Pre-formed piping
- Brass valves (TXH, TXZ)
- Base valve on suction line (TXH)
- Suction service valve (TXS, TXZ)
- Copper tubing secured with cushion clamps
- Semi-hermetics spring mounted with vibration absorber (TXS)
- Hermetics/scrolls rubber mounted (TXH, TXZ)
- Co-Axial condenser
- Receiver with fusible plug and liquid shut off valve
- Adjustable dual high / low pressure control with flex hoses
- Each unit subjected to a thorough leak test with Helium leak-detectors
- Units are shipped with Helium holding charge
- Liquid injection (Low temperature scroll only) (TXZ)
- Water reg valve (shipped loose)

AVAILABLE OPTIONS

- Suction accumulator
- Suction accumulator with boil-out coil
- Discharge line check valve
- Oil separator
- Oil separator c/w oil return filter & solenoid valve
- Receiver inlet ball valve
- Over-sized receiver
- Sealed liquid line filter drier & sight glass
- Ball valve – liquid line (shipped loose)
- Insulated suction lines
- Liquid line solenoid valve (with standard 230 volt coil) – shipped loose
- Compressor circuit breaker
- Defrost heater contactor c/w fuse block
- Evaporator fan contactor c/w fuse block
- Disconnect switch
- Disconnect fusing
- Pump down toggle switch
- Lock out control circuit – Liquid solenoid valve with separate HP and LP controls
- Time delay relay for compressor
- Mechanical time clock
- Electronic voltage/phase monitor

CAPACITY DATA - **R448A**

MEDIUM TEMPERATURE

Capacity Rating Conditions: 85°F (29.4°C) Entering Water, 105°F (40.6°C) Condensing, 0°F (0°C) Subcooling

MODEL TXHA	SATURATED SUCTION TEMPERATURE °F (°C)										
		-10 (-23.3)	-5 (-20.6)	0 (-17.8)	5 (-15)	10 (-12.2)	15 (-9.4)	20 (-6.7)	25 (-3.9)		
TXHA006M8 Compressor: RST45C1E	BTU/H (Watts)	2260 (660)	2610 (760)	3010 (880)	3460 (1010)	3980 (1170)	4560 (1340)	5210 (1530)	5950 (1740)		
	GPM (L/min)	1.0 (3.8)	1.0 (3.6)	1.0 (3.6)	1.0 (3.8)	1.1 (4.2)	1.3 (5)	1.6 (6.2)	2.1 (8)		
	PSIG (kPa)	0.6 (4.4)	0.6 (4.1)	0.6 (4.1)	0.6 (4.4)	0.7 (5.1)	1.0 (6.7)	1.4 (9.4)	2.1 (14.2)		
TXHA008M8 Compressor: RST55C1E	BTU/H (Watts)	2730 (800)	3170 (930)	3660 (1070)	4220 (1240)	4850 (1420)	5560 (1630)	6350 (1860)	7250 (2120)		
	GPM (L/min)	0.6 (2.1)	0.6 (2.2)	0.6 (2.3)	0.7 (2.6)	0.8 (3)	1.0 (3.6)	1.2 (4.6)	1.6 (5.9)		
	PSIG (kPa)	0.3 (2)	0.3 (2.1)	0.3 (2.3)	0.4 (2.8)	0.5 (3.7)	0.7 (5.1)	1.1 (7.4)	1.6 (11)		
TXHA009M8 Compressor: RST64C1E	BTU/H (Watts)	3610 (1060)	4200 (1230)	4880 (1430)	5650 (1660)	6510 (1910)	7280 (2130)	8150 (2390)	9070 (2660)		
	GPM (L/min)	0.7 (2.5)	0.8 (2.9)	0.9 (3.5)	1.2 (4.5)	1.4 (5.3)	1.8 (6.8)	2.3 (8.5)	2.8 (10.6)		
	PSIG (kPa)	0.4 (2.7)	0.5 (3.5)	0.7 (4.9)	1.0 (7.2)	1.4 (9.5)	2.0 (13.9)	2.9 (19.9)	4.1 (28.2)		
TXHA010M8 Compressor: RST70C1E	BTU/H (Watts)	3790 (1110)	4430 (1300)	5120 (1500)	5860 (1720)	6640 (1950)	7480 (2190)	8370 (2450)	9320 (2730)		
	GPM (L/min)	0.6 (2.5)	0.8 (2.9)	0.9 (3.5)	1.2 (4.4)	1.4 (5.5)	1.8 (6.9)	2.3 (8.6)	2.8 (10.7)		
	PSIG (kPa)	0.4 (2.6)	0.5 (3.5)	0.7 (4.8)	1.0 (6.9)	1.4 (9.9)	2.1 (14.2)	2.9 (20.2)	4.1 (28.5)		
TXHA011M8 Compressor: RST80C1E	BTU/H (Watts)	4480 (1310)	5200 (1520)	5980 (1750)	6820 (2000)	7710 (2260)	8680 (2540)	9710 (2850)	10810 (3170)		
	GPM (L/min)	0.8 (3.1)	1.0 (3.9)	1.3 (4.9)	1.6 (6.2)	2.1 (7.9)	2.6 (10)	3.3 (12.6)	4.1 (15.6)		
	PSIG (kPa)	0.6 (3.8)	0.7 (5.1)	1.0 (7.2)	1.7 (11.6)	2.4 (16.6)	3.5 (24)	5.0 (34.5)	7.2 (49.7)		
TXHA013M8 Compressor: RST97C1E	BTU/H (Watts)	5130 (1500)	5970 (1750)	6880 (2020)	7840 (2300)	8860 (2600)	9930 (2910)	11050 (3240)	12230 (3580)		
	GPM (L/min)	1.3 (4.9)	1.5 (5.8)	1.8 (7)	2.2 (8.4)	2.7 (10.1)	3.2 (12.2)	3.9 (14.6)	4.6 (17.4)		
	PSIG (kPa)	0.3 (2.1)	0.4 (2.9)	0.6 (4)	0.8 (5.6)	1.1 (7.8)	1.6 (10.7)	2.1 (14.6)	2.9 (19.7)		

For R449A, use R448A data.

CAPACITY DATA - **R407C**

HIGH / MEDIUM TEMPERATURE

Capacity Rating Conditions: 85°F (29.4°C) Entering Water, 110°F (43.3°C) Condensing, 0°F (0°C) Subcooling

MODEL TXHA	SATURATED SUCTION TEMPERATURE °F (°C)										
		10 (-12.2)	15 (-9.4)	20 (-6.7)	25 (-3.9)	30 (-1.1)	35 (1.7)	40 (4.4)	45 (7.2)		
TXHA015H7 Compressor: CR18K6E	BTU/H (Watts)	7570 (2220)	8990 (2630)	10500 (3080)	12100 (3550)	13700 (4020)	15500 (4540)	17500 (5130)	19600 (5740)		
	GPM (L/min)	1.2 (4.5)	1.4 (5.3)	1.6 (6.1)	1.8 (6.8)	2.0 (7.6)	2.6 (9.8)	3.4 (12.8)	4.4 (16.5)		
	PSIG (kPa)	0.5 (3.5)	0.6 (4)	0.7 (4.5)	0.7 (5.1)	0.8 (5.8)	1.2 (8.2)	1.8 (12.1)	2.7 (18.5)		
TXA020H7 Compressor: CR24K6E	BTU/H (Watts)	9590 (2810)	11400 (3340)	13500 (3960)	15700 (4600)	18300 (5360)	21200 (6210)	24500 (7180)	28200 (8260)		
	GPM (L/min)	1.5 (5.7)	1.7 (6.4)	1.9 (7.3)	2.8 (10.7)	4.0 (15)	5.4 (20.4)	7.2 (27.1)	9.4 (35.7)		
	PSIG (kPa)	0.6 (3.9)	0.7 (4.6)	0.8 (5.5)	1.4 (9.5)	2.3 (15.7)	3.7 (25.3)	5.9 (40.3)	9.3 (64)		
TXA025H7 Compressor: CR32K6E	BTU/H (Watts)	12400 (3630)	14800 (4340)	17400 (5100)	20400 (5980)	23700 (6950)	27400 (8030)	31700 (9290)	36500 (10700)		
	GPM (L/min)	2.0 (7.6)	2.2 (8.3)	2.5 (9.3)	3.4 (12.7)	4.6 (17.6)	6.4 (24.4)	8.9 (33.6)	12.2 (46.2)		
	PSIG (kPa)	0.3 (2)	0.4 (2.7)	0.5 (3.7)	1.1 (7.3)	1.9 (13.3)	3.4 (23.4)	5.8 (40.3)	10.0 (69)		
TXHA030H7 Compressor: CR38K6E	BTU/H (Watts)	15400 (4510)	18300 (5360)	21600 (6330)	25200 (7390)	29000 (8500)	33100 (9700)	37300 (10930)	41700 (12220)		
	GPM (L/min)	3.2 (12)	3.7 (13.9)	4.4 (16.8)	5.6 (21.1)	7.1 (26.9)	9.0 (34.2)	11.3 (43)	14.1 (53.3)		
	PSIG (kPa)	0.8 (5.6)	1.0 (6.9)	1.4 (9.3)	1.9 (13.4)	2.9 (19.9)	4.3 (29.8)	6.4 (44.4)	9.5 (65.2)		
TXHA035H7 Compressor: CR42K6E	BTU/H (Watts)	17300 (5070)	20600 (6040)	24300 (7120)	28400 (8320)	32700 (9580)	37300 (10930)	42100 (12340)	47100 (13800)		
	GPM (L/min)	2.8 (10.6)	3.0 (11.4)	3.4 (12.9)	3.9 (14.8)	4.4 (16.7)	5.7 (21.7)	7.4 (28)	9.4 (35.7)		
	PSIG (kPa)	2.1 (14.5)	2.2 (14.9)	2.3 (15.6)	2.4 (16.4)	2.5 (17.4)	2.9 (20)	3.4 (23.7)	4.2 (28.8)		
TXHA040H7 Compressor: CR53KQE	BTU/H (Watts)	22700 (6650)	26900 (7880)	31300 (9170)	36200 (10610)	41400 (12130)	47200 (13830)	53500 (15680)	60400 (17700)		
	GPM (L/min)	3.5 (13.2)	3.8 (14.4)	4.5 (17)	5.0 (18.9)	5.9 (22.2)	7.9 (29.8)	10.6 (40.3)	14.3 (54.2)		
	PSIG (kPa)	0.1 (0.4)	0.1 (0.9)	0.3 (2.4)	0.5 (3.4)	0.8 (5.4)	1.5 (10.5)	2.7 (18.8)	4.7 (32.2)		
TXHA050H7 Compressor: CRNQ-050E	BTU/H (Watts)	28100 (8240)	32700 (9580)	37500 (10990)	42600 (12480)	48300 (14160)	54600 (16000)	61700 (18080)	69800 (20460)		
	GPM (L/min)	4.6 (17.4)	5.5 (20.9)	7.0 (26.6)	9.1 (34.6)	12.1 (45.7)	16.0 (60.7)	21.4 (81)	28.7 (108.5)		
	PSIG (kPa)	1.4 (9.8)	1.4 (10)	1.5 (10.7)	1.8 (12.6)	2.5 (17)	3.8 (26.4)	6.5 (45.1)	11.8 (81.5)		

NOTE: The capacities shown above are rated at dew point. The dew point is a saturation point and is the condition (pressure and temperature) at which a gas begins to condense. Since R407C has significant glide, the saturated gas and saturated liquid temperatures are not the same. It is important that all components of a system are selected correctly

CAPACITY DATA - **R407C**

HIGH / MEDIUM TEMPERATURE

Capacity Rating Conditions: 85°F (29.4°C) Entering Water, 110°F (43.3°C) Condensing, 0°F (0°C) Subcooling

MODEL TXHA	SATURATED SUCTION TEMPERATURE °F (°C)									
	10 (-12.2)	15 (-9.4)	20 (-6.7)	25 (-3.9)	30 (-1.1)	35 (1.7)	40 (4.4)	45 (7.2)		
TXHA006M8 Compressor: RST45C1E	BTU/H (Watts)	3760 (1100)	4330 (1270)	4950 (1450)	5640 (1650)	6390 (1870)	7190 (2110)	8060 (2360)	8990 (2630)	
	GPM (L/min)	0.9 (3.4)	1.0 (3.7)	1.1 (4.2)	1.3 (4.9)	1.6 (6)	2.0 (7.5)	2.5 (9.4)	3.1 (11.8)	
	PSIG (kPa)	0.5 (3.8)	0.6 (4.2)	0.7 (5.1)	1.0 (6.6)	1.3 (9)	1.9 (12.8)	2.7 (18.5)	3.9 (27.2)	
TXA008M8 Compressor: RST55C1E	BTU/H (Watts)	4620 (1350)	5290 (1550)	6020 (1760)	6820 (2000)	7710 (2260)	8680 (2540)	9740 (2850)	10910 (3200)	
	GPM (L/min)	0.7 (2.6)	0.8 (2.9)	0.9 (3.3)	1.0 (3.9)	1.2 (4.7)	1.5 (5.8)	1.9 (7.1)	2.3 (8.8)	
	PSIG (kPa)	0.4 (2.8)	0.5 (3.5)	0.6 (4.4)	0.8 (5.8)	1.1 (7.8)	1.5 (10.7)	2.2 (14.8)	3.0 (20.9)	
TXA009M8 Compressor: RST64C1E	BTU/H (Watts)	6060 (1780)	6930 (2030)	7890 (2310)	8940 (2620)	10100 (2960)	11010 (3230)	12360 (3620)	13830 (4050)	
	GPM (L/min)	1.0 (3.6)	1.2 (4.4)	1.4 (5.4)	1.8 (6.7)	2.0 (7.7)	2.5 (9.4)	3.1 (11.7)	3.9 (14.6)	
	PSIG (kPa)	0.7 (5.1)	1.0 (7)	1.4 (9.6)	2.0 (13.4)	2.4 (16.8)	3.3 (23.1)	4.8 (33.1)	6.9 (47.8)	
TXHA010M8 Compressor: RST70C1E	BTU/H (Watts)	6260 (1830)	7120 (2090)	8050 (2360)	9070 (2660)	10200 (2990)	11430 (3350)	12790 (3750)	14290 (4190)	
	GPM (L/min)	1.0 (3.7)	1.2 (4.5)	1.4 (5.4)	1.8 (6.6)	2.2 (8.2)	2.7 (10)	3.3 (12.4)	4.0 (15.2)	
	PSIG (kPa)	0.8 (5.4)	1.0 (7.2)	1.4 (9.7)	1.9 (13.4)	2.7 (18.5)	3.7 (25.9)	5.3 (36.4)	7.5 (51.5)	
TXHA011M8 Compressor: RST80C1E	BTU/H (Watts)	7280 (2130)	8280 (2430)	9370 (2750)	10560 (3090)	11870 (3480)	13310 (3900)	14890 (4360)	16640 (4880)	
	GPM (L/min)	1.3 (5)	1.6 (6.2)	2.0 (7.6)	2.5 (9.4)	3.1 (11.6)	3.8 (14.4)	4.7 (17.7)	5.8 (21.8)	
	PSIG (kPa)	1.2 (8.5)	1.7 (11.8)	2.4 (16.5)	3.4 (23.2)	4.8 (32.8)	6.8 (46.7)	9.7 (66.6)	13.9 (95.5)	
TXHA013M8 Compressor: RST97C1E	BTU/H (Watts)	8270 (2420)	9400 (2750)	10640 (3120)	11990 (3510)	13470 (3950)	15110 (4430)	16900 (4950)	18880 (5530)	
	GPM (L/min)	1.6 (6.2)	1.9 (7.4)	2.3 (8.9)	2.8 (10.7)	3.4 (13)	4.2 (15.9)	5.1 (19.4)	6.3 (23.8)	
	PSIG (kPa)	0.5 (3.3)	0.6 (4.5)	0.9 (6.1)	1.2 (8.6)	1.7 (12)	2.5 (16.9)	3.5 (24.1)	5.0 (34.4)	

CAPACITY DATA - **R404A R507**

MEDIUM TEMPERATURE

Capacity Rating Conditions: 85°F (29.4°C) Entering Water, 105°F (40.6°C) Condensing, 0°F (0°C) Subcooling

MODEL TXHA	SATURATED SUCTION TEMPERATURE °F (°C)										
	-10 (-23.3)	-5 (-20.6)	0 (-17.8)	5 (-15.0)	10 (-9.4)	20 (-6.7)	25 (-3.9)	30 (-1.1)			
TXHA006M8 Compressor: RST45C1E	BTU/H (Watts)	2400 (700)	2780 (810)	3190 (930)	4130 (1210)	4640 (1360)	5190 (1520)	5780 (1690)	6400 (1880)		
	GPM (L/min)	0.6 (2.1)	0.6 (2.3)	0.7 (2.6)	0.9 (3.4)	1.0 (3.9)	1.2 (4.6)	1.4 (5.3)	1.6 (6.2)		
	PSIG (kPa)	0.3 (1.8)	0.3 (2)	0.4 (2.4)	0.5 (3.7)	0.7 (4.6)	0.9 (5.9)	1.1 (7.5)	1.4 (9.5)		
TXHA008M8 Compressor: RST55C1E	BTU/H (Watts)	2880 (840)	3370 (990)	3880 (1140)	5030 (1470)	5660 (1660)	6330 (1860)	7030 (2060)	7790 (2280)		
	GPM (L/min)	0.6 (2.3)	0.6 (2.3)	0.6 (2.4)	0.8 (2.9)	0.9 (3.3)	1.0 (3.7)	1.1 (4.3)	1.3 (5.1)		
	PSIG (kPa)	0.3 (2.4)	0.4 (2.4)	0.4 (2.6)	0.5 (3.5)	0.6 (4.3)	0.8 (5.4)	1.0 (6.8)	1.3 (8.8)		
TXHA009M8 Compressor: RST64C1E	BTU/H (Watts)	3940 (1150)	4540 (1330)	5190 (1520)	6610 (1940)	7380 (2160)	8190 (2400)	9050 (2650)	9950 (2920)		
	GPM (L/min)	0.7 (2.6)	0.7 (2.8)	0.8 (3.2)	1.1 (4.3)	1.3 (5)	1.6 (6)	1.9 (7.2)	2.3 (8.6)		
	PSIG (kPa)	0.4 (2.8)	0.5 (3.3)	0.6 (4.1)	1.0 (6.6)	1.3 (8.7)	1.7 (11.4)	2.2 (15.1)	2.9 (20)		
TXHA010M8 Compressor: RST70C1E	BTU/H (Watts)	4010 (1180)	4640 (1360)	5330 (1560)	6840 (2000)	7670 (2250)	8550 (2510)	9480 (2780)	10450 (3060)		
	GPM (L/min)	0.7 (2.5)	0.7 (2.8)	0.8 (3.2)	1.1 (4.3)	1.4 (5.2)	1.6 (6.2)	1.9 (7.3)	2.3 (8.7)		
	PSIG (kPa)	0.4 (2.8)	0.5 (3.3)	0.6 (4.1)	1.0 (6.8)	1.3 (9)	1.7 (11.9)	2.3 (15.7)	3.0 (20.6)		
TXHA011M8 Compressor: RST80C1E	BTU/H (Watts)	4780 (1400)	5490 (1610)	6270 (1840)	7980 (2340)	8920 (2610)	9920 (2910)	10970 (3210)	12080 (3540)		
	GPM (L/min)	0.8 (3)	0.9 (3.5)	1.1 (4.1)	1.6 (5.9)	1.9 (7.1)	2.3 (8.6)	2.7 (10.3)	3.2 (12.3)		
	PSIG (kPa)	0.5 (3.7)	0.7 (4.7)	0.9 (6.2)	1.6 (11)	2.2 (14.9)	2.9 (20)	3.9 (26.9)	5.2 (36.1)		
TXHA013M8 Compressor: RST97C1E	BTU/H (Watts)	5450 (1600)	6280 (1840)	7180 (2100)	9160 (2680)	10220 (3000)	11330 (3320)	12470 (3650)	13640 (4000)		
	GPM (L/min)	1.1 (4)	1.2 (4.4)	1.3 (5)	1.8 (6.7)	2.1 (7.9)	2.5 (9.4)	2.9 (11)	3.4 (12.9)		
	PSIG (kPa)	0.2 (1.4)	0.2 (1.7)	0.3 (2.1)	0.5 (3.8)	0.7 (5.1)	1.0 (6.8)	1.3 (9)	1.7 (11.8)		

**CAPACITY DATA - R404A R507
EXTENDED MEDIUM TEMPERATURE**

Capacity Rating Conditions: 85°F (29.4°C) Entering Water, 105°F (40.6°C) Condensing, 0°F (0°C) Subcooling

MODEL TXHA	SATURATED SUCTION TEMPERATURE °F (°C)										
	-25 (-31.7)	-20 (-28.9)	-10 (-23.3)	0 (-17.8)	10 (-12.2)	20 (-6.7)	25 (-3.9)	30 (-1.1)			
TXHA015M6 Compressor: CS10K6E	BTU/H (Watts)	1970 (580)	2710 (790)	4580 (1340)	6930 (2030)	9710 (2850)	12900 (3780)	14600 (4280)	16300 (4780)		
	GPM (L/min)	0.0 (0.1)	0.1 (0.4)	0.3 (1.3)	0.8 (3)	1.5 (5.6)	2.5 (9.4)	3.1 (11.7)	3.8 (14.3)		
	PSIG (kPa)	0.1 (0.7)	0.1 (0.7)	0.1 (0.5)	0.2 (1.4)	0.5 (3.4)	1.1 (7.4)	1.5 (10.5)	2.1 (14.7)		
TXHA020M6 Compressor: CS12K6E	BTU/H (Watts)	2610 (760)	3500 (1030)	5670 (1660)	8340 (2440)	11500 (3370)	15100 (4430)	17100 (5010)	19200 (5630)		
	GPM (L/min)	0.1 (0.4)	0.2 (0.7)	0.6 (2.1)	1.2 (4.4)	2.1 (8.1)	3.5 (13.2)	4.3 (16.4)	5.3 (20.1)		
	PSIG (kPa)	0.1 (0.7)	0.1 (0.7)	0.1 (0.9)	0.3 (2.4)	0.8 (5.8)	1.9 (12.8)	2.7 (18.5)	3.8 (26.2)		
TXHA025M6 Compressor: CS14K6E	BTU/H (Watts)	3780 (1110)	4750 (1390)	7160 (2100)	10100 (2960)	13600 (3990)	17500 (5130)	19600 (5740)	21800 (6390)		
	GPM (L/min)	0.2 (0.8)	0.3 (1.2)	0.7 (2.6)	1.3 (5)	2.3 (8.7)	3.7 (14.1)	4.6 (17.6)	5.7 (21.4)		
	PSIG (kPa)	0.1 (0.4)	0.1 (0.7)	0.2 (1.6)	0.5 (3.4)	1.0 (7.2)	2.1 (14.4)	2.9 (20)	4.0 (27.5)		
TXHA030M6 Compressor: CS18K6E	BTU/H (Watts)	4530 (1330)	5590 (1640)	8630 (2530)	12700 (3720)	17500 (5130)	22900 (6710)	25700 (7530)	28500 (8350)		
	GPM (L/min)	0.1 (0.3)	0.1 (0.5)	0.4 (1.4)	0.9 (3.4)	1.9 (7.1)	3.5 (13.3)	4.6 (17.4)	5.8 (22.1)		
	PSIG (kPa)	0.1 (0.7)	0.1 (0.7)	0.1 (0.5)	0.2 (1.2)	0.4 (3.1)	1.0 (7.2)	1.5 (10.6)	2.2 (15.3)		
TXHA035M6 Compressor: CS20K6E	BTU/H (Watts)	4580 (1340)	6420 (1880)	10100 (2960)	14200 (4160)	19200 (5630)	25600 (7500)	29500 (8650)	34000 (9960)		
	GPM (L/min)	0.1 (0.4)	0.2 (0.8)	0.6 (2.2)	1.2 (4.7)	2.5 (9.5)	4.9 (18.6)	6.9 (26.2)	9.7 (36.8)		
	PSIG (kPa)	0.1 (0.7)	0.1 (0.7)	0.1 (0.8)	0.3 (1.8)	0.6 (4.5)	1.7 (11.8)	2.9 (19.9)	5.0 (34.8)		
TXHA040M6 Compressor: CS27K6E	BTU/H (Watts)	7530 (2210)	9410 (2760)	13800 (4040)	19200 (5630)	25800 (7560)	33800 (9910)	38400 (11250)	43300 (12690)		
	GPM (L/min)	0.8 (2.9)	1.1 (4.1)	2.0 (7.5)	3.4 (12.8)	5.4 (20.5)	8.4 (31.9)	10.4 (39.2)	12.6 (47.8)		
	PSIG (kPa)	0.1 (0.8)	0.2 (1.2)	0.4 (2.7)	0.8 (5.7)	1.7 (12)	3.6 (24.8)	5.1 (35.5)	7.3 (50.3)		
TXHA050M6 Compressor: CS33K6E	BTU/H (Watts)	9590 (2810)	10800 (3170)	15300 (4480)	21900 (6420)	29800 (8730)	38300 (11220)	42600 (12480)	46800 (13720)		
	GPM (L/min)	0.7 (2.5)	0.8 (3.1)	1.5 (5.7)	2.8 (10.6)	4.8 (18)	7.3 (27.6)	8.7 (33)	10.1 (38.3)		
	PSIG (kPa)	0.1 (0.7)	0.1 (0.9)	0.3 (1.8)	0.5 (3.7)	1.1 (7.3)	1.9 (13.1)	2.5 (17)	3.1 (21.2)		

**CAPACITY DATA - R404A R507
LOW TEMPERATURE**

Capacity Rating Conditions: 85°F (29.4°C) Entering Water, 105°F (40.6°C) Condensing, 0°F (0°C) Subcooling

MODEL TXHA	SATURATED SUCTION TEMPERATURE °F (°C)										
	-30 (-34.4)	-20 (-28.9)	-10 (-23.3)	-5 (-20.6)	0 (-17.8)	5 (-15)	10 (-12.2)				
TXHA006L6 Compressor: RFT22C1E	BTU/H (Watts)	1310 (380)	1890 (550)	2580 (760)	2960 (870)	3380 (990)	3830 (1120)	4300 (1260)			
	GPM (L/min)	0.2 (0.9)	0.4 (1.6)	0.7 (2.7)	0.9 (3.3)	1.1 (4.1)	1.3 (5.1)	1.6 (6.1)			
	PSIG (kPa)	0.1 (0.5)	0.1 (1)	0.3 (2)	0.4 (2.8)	0.6 (3.8)	0.8 (5.2)	1.0 (7.1)			
TXHA008L6 Compressor: RFT26C1E	BTU/H (Watts)	1670 (490)	2340 (690)	3140 (920)	3600 (1060)	4100 (1200)	4610 (1350)	5180 (1520)			
	GPM (L/min)	0.5 (1.9)	0.8 (3)	1.2 (4.6)	1.5 (5.6)	1.8 (6.8)	2.2 (8.2)	2.6 (9.8)			
	PSIG (kPa)	0.2 (1.2)	0.3 (2.3)	0.7 (4.5)	0.9 (6.2)	1.2 (8.5)	1.7 (11.6)	2.3 (15.6)			
TXHA010L6 Compressor: CF04K6E	BTU/H (Watts)	2080 (610)	3570 (1050)	5310 (1560)	6370 (1870)	7590 (2220)	9020 (2640)	10700 (3140)			
	GPM (L/min)	0.4 (1.7)	0.9 (3.5)	1.7 (6.3)	2.2 (8.2)	2.8 (10.7)	3.7 (14)	4.8 (18.2)			
	PSIG (kPa)	0.2 (1.5)	0.6 (3.9)	1.4 (9.5)	2.2 (14.8)	3.4 (23.2)	5.3 (36.7)	8.5 (58.5)			
TXHA020L6 Compressor: CF06K6E	BTU/H (Watts)	3660 (1070)	5720 (1680)	8330 (2440)	9800 (2870)	11400 (3340)	13100 (3840)	14900 (4370)			
	GPM (L/min)	0.7 (2.5)	1.3 (4.8)	2.3 (8.6)	2.9 (11.2)	3.7 (14.1)	4.6 (17.6)	5.7 (21.4)			
	PSIG (kPa)	0.5 (3.4)	1.2 (8.3)	2.9 (20.1)	4.4 (30.6)	6.6 (45.4)	9.6 (66.2)	13.6 (93.9)			
TXHA025L6 Compressor: CF09K6E	BTU/H (Watts)	5820 (1710)	8810 (2580)	12400 (3630)	14500 (4250)	16700 (4890)	19100 (5600)	21600 (6330)			
	GPM (L/min)	0.8 (3)	1.7 (6.5)	3.2 (12.3)	4.3 (16.2)	5.5 (20.8)	6.9 (26.2)	8.6 (32.6)			
	PSIG (kPa)	0.2 (1.4)	0.6 (4.2)	1.7 (11.4)	2.6 (18)	4.0 (27.9)	6.1 (42.2)	9.1 (62.5)			
TXHA030L6 Compressor: CF12K6E	BTU/H (Watts)	7850 (2300)	11700 (3430)	16000 (4690)	18400 (5390)	21100 (6180)	24100 (7060)	27300 (8000)			
	GPM (L/min)	1.1 (4.3)	2.4 (9.1)	4.4 (16.8)	5.8 (22.1)	7.6 (28.7)	9.8 (37)	12.5 (47.4)			
	PSIG (kPa)	0.4 (2.8)	1.1 (7.6)	2.7 (18.7)	4.2 (28.9)	6.4 (44.4)	9.9 (68.2)	15.2 (104.9)			

CAPACITY DATA - **R448A** MEDIUM TEMPERATURE

Capacity Rating Conditions: 85°F (29.4°C) Entering Water, 105°F (40.6°C) Condensing, 0°F (0°C) Subcooling

MODEL TXSA		SATURATED SUCTION TEMPERATURE °F (°C)							
		-5 (-20.6)	0 (-17.8)	5 (-15)	10 (-12.2)	15 (-9.4)	20 (-6.7)		
TXSA010M8 Compressor: KARB-010E	BTU/H (Watts)	4490 (1320)	5220 (1530)	6090 (1780)	7020 (2060)	7950 (2330)	8780 (2570)		
	GPM (L/min)	1.4 (5.3)	1.5 (5.7)	1.7 (6.4)	2.2 (8.5)	2.9 (11)	3.6 (13.6)		
	PSIG (kPa)	1.4 (9.4)	1.5 (10.4)	1.8 (12.7)	2.9 (19.8)	4.3 (30)	6.2 (42.7)		
TXSA020M8 Compressor: KAKA-020E	BTU/H (Watts)	7260 (2130)	8410 (2460)	9840 (2880)	11410 (3340)	13010 (3810)	14510 (4250)		
	GPM (L/min)	1.3 (4.9)	1.4 (5.4)	1.7 (6.4)	2.2 (8.2)	2.8 (10.7)	3.6 (13.5)		
	PSIG (kPa)	0.5 (3.7)	0.6 (4)	0.7 (4.8)	0.9 (6.5)	1.3 (9.2)	1.9 (13.3)		
TXSA021M8 Compressor: ERCA-021E	BTU/H (Watts)	8010 (2350)	9550 (2800)	11270 (3300)	13130 (3850)	15110 (4430)	17170 (5030)		
	GPM (L/min)	2.2 (8.2)	2.5 (9.6)	3.1 (11.6)	3.8 (14.2)	4.6 (17.5)	5.6 (21)		
	PSIG (kPa)	0.9 (6.5)	1.2 (8.1)	1.5 (10.6)	2.1 (14.5)	2.9 (19.9)	3.9 (26.7)		
TXSA030M8 Compressor: ERFA-031E	BTU/H (Watts)	12060 (3530)	14270 (4180)	16790 (4920)	19540 (5730)	22440 (6580)	25420 (7450)		
	GPM (L/min)	2.6 (9.8)	3.0 (11.4)	3.4 (12.9)	3.8 (14.4)	4.6 (17.6)	6.2 (23.5)		
	PSIG (kPa)	0.6 (4.2)	0.8 (5.8)	1.1 (7.4)	1.3 (9.2)	1.9 (13.3)	3.2 (21.9)		

For R449A, use R448A data.

CAPACITY DATA - **R448A** LOW TEMPERATURE

Capacity Rating Conditions: 85°F (29.4°C) Entering Water, 105°F (40.6°C) Condensing, 0°F (0°C) Subcooling

MODEL TXSA		SATURATED SUCTION TEMPERATURE °F (°C)							
		-40 (-40)	-30 (-34.4)	-20 (-28.9)	-15 (-26.1)	-10 (-23.3)	0 (-17.8)		
TXSA005L8 Compressor: KANB-005E	BTU/H (Watts)	360 (110)	720 (210)	1310 (380)	1690 (500)	2130 (620)	2630 (770)		
	GPM (L/min)	1.0 (3.8)	1.1 (4.2)	1.3 (4.9)	1.4 (5.3)	1.5 (5.7)	1.6 (6.1)		
	PSIG (kPa)	0.6 (4.4)	0.7 (5.1)	1.0 (6.6)	1.1 (7.4)	1.2 (8.2)	1.3 (9.1)		
TXSA008L8 Compressor: KAMB-007E	BTU/H (Watts)	850 (250)	1330 (390)	2250 (660)	2840 (830)	3520 (1030)	4270 (1250)		
	GPM (L/min)	0.8 (3)	0.9 (3.4)	0.9 (3.4)	1.0 (3.9)	1.5 (5.7)	2.1 (7.8)		
	PSIG (kPa)	0.3 (2.2)	0.4 (2.8)	0.5 (3.4)	0.6 (4.4)	1.0 (7.2)	1.8 (12.6)		
TXSA010L8 Compressor: KAJB-010E	BTU/H (Watts)	1120 (330)	1800 (530)	2980 (870)	3750 (1100)	4630 (1360)	5630 (1650)		
	GPM (L/min)	1.0 (3.8)	1.1 (4.2)	1.3 (4.9)	1.4 (5.3)	1.5 (5.7)	2.3 (8.7)		
	PSIG (kPa)	0.8 (5.5)	0.9 (6.4)	1.1 (7.9)	1.3 (8.9)	1.4 (9.9)	2.9 (19.7)		
TXSA015L8 Compressor: KALB-015E	BTU/H (Watts)	1670 (490)	2710 (790)	4460 (1310)	5590 (1640)	6900 (2020)	8370 (2450)		
	GPM (L/min)	1.3 (4.9)	1.5 (5.7)	1.7 (6.4)	1.9 (7.1)	2.5 (9.4)	3.4 (12.7)		
	PSIG (kPa)	0.3 (2.2)	0.4 (2.8)	0.5 (3.3)	0.6 (3.9)	0.9 (6.3)	1.7 (11.4)		
TXSA020L8 Compressor: EADB-021E	BTU/H (Watts)	2460 (720)	4180 (1230)	6530 (1910)	7900 (2320)	9380 (2750)	10950 (3210)		
	GPM (L/min)	1.8 (6.8)	2.2 (8.3)	2.5 (9.5)	3.1 (11.8)	4.1 (15.7)	5.4 (20.5)		
	PSIG (kPa)	0.5 (3.7)	0.7 (4.9)	0.9 (6.1)	1.2 (8.6)	2.1 (14.4)	3.7 (25.3)		
TXSA021L8 Compressor: EAVB-021E	BTU/H (Watts)	2960 (870)	5100 (1490)	7740 (2270)	9200 (2700)	10740 (3150)	12320 (3610)		
	GPM (L/min)	1.9 (7.2)	2.0 (7.6)	2.1 (7.9)	2.9 (11)	4.4 (16.7)	4.6 (17.4)		
	PSIG (kPa)	0.8 (5.5)	0.8 (5.8)	0.9 (6.2)	1.4 (9.6)	2.7 (18.8)	2.9 (20.3)		
TXSA030L8 Compressor: LAHA-032E	BTU/H (Watts)	4110 (1200)	7790 (2280)	12250 (3590)	14820 (4340)	17640 (5170)	20720 (6070)		
	GPM (L/min)	2.7 (10.2)	3.0 (11.4)	5.0 (18.9)	7.0 (26.7)	9.8 (37.1)	13.5 (51.1)		
	PSIG (kPa)	1.2 (8.1)	1.4 (9.6)	2.6 (18.1)	4.8 (33.1)	8.8 (60.4)	16.7 (115.4)		
TXSA032L8 Compressor: LACA-032E	BTU/H (Watts)	6640 (1950)	10330 (3030)	15850 (4650)	-	-	-		
	GPM (L/min)	3.3 (12.5)	5.2 (19.7)	8.7 (33)	-	-	-		
	PSIG (kPa)	1.3 (8.9)	2.7 (18.6)	7.1 (48.8)	-	-	-		

For R449A, use R448A data.

MEDIUM TEMPERATURE

Capacity Rating Conditions: 85°F (29.4°C) Entering Water, 105°F (40.6°C) Condensing, 0°F (0°C) Subcooling

MODEL TXSA	SATURATED SUCTION TEMPERATURE °F (°C)									
	-5 (-20.6)	0 (-17.8)	5 (-15)	10 (-12.2)	15 (-9.4)	20 (-6.7)	25 (-3.9)			
TXSA010M8 Compressor: KARB-010E	BTU/H (Watts)	4870 (1430)	5540 (1620)	6320 (1850)	7170 (2100)	8070 (2370)	8980 (2630)	9870 (2890)		
	GPM (L/min)	1.2 (4.5)	1.3 (4.8)	1.4 (5.3)	1.6 (5.9)	1.8 (6.8)	2.1 (7.8)	2.3 (8.8)		
	PSIG (kPa)	1.1 (7.3)	1.2 (8)	1.3 (9.3)	1.6 (11.1)	2.0 (13.8)	2.5 (17.1)	3.0 (21)		
TXSA020M8 Compressor: KAKA-020E	BTU/H (Watts)	7920 (2320)	8930 (2620)	10200 (2990)	11600 (3400)	13100 (3840)	14800 (4340)	16400 (4810)		
	GPM (L/min)	1.3 (4.8)	1.5 (5.6)	1.8 (6.8)	2.2 (8.3)	2.7 (10.2)	3.3 (12.5)	3.9 (14.9)		
	PSIG (kPa)	0.5 (3.6)	0.6 (4.2)	0.7 (5.1)	0.9 (6.5)	1.3 (8.7)	1.7 (11.7)	2.3 (15.5)		
TXSA021M8 Compressor: ERCA-021E	BTU/H (Watts)	9610 (2820)	11200 (3280)	12800 (3750)	14600 (4280)	16400 (4810)	18500 (5420)	20800 (6100)		
	GPM (L/min)	1.6 (5.9)	1.9 (7)	2.3 (8.6)	2.8 (10.6)	3.5 (13.1)	4.3 (16.4)	5.4 (20.4)		
	PSIG (kPa)	0.6 (4.1)	0.8 (5.3)	1.0 (6.9)	1.4 (9.4)	1.9 (12.9)	2.6 (18)	3.7 (25.4)		
TXSA030M8 Compressor: ERFA-031E	BTU/H (Watts)	14300 (4190)	16400 (4810)	18600 (5450)	21100 (6180)	23800 (6980)	26700 (7820)	30000 (8790)		
	GPM (L/min)	3.1 (11.7)	3.1 (11.7)	3.3 (12.5)	3.8 (14.3)	4.6 (17.5)	5.8 (22.1)	7.6 (28.7)		
	PSIG (kPa)	0.9 (6.2)	0.9 (6.1)	1.0 (7)	1.3 (9.1)	1.9 (13.1)	2.9 (19.8)	4.5 (30.8)		

CAPACITY DATA - R404A R507

LOW TEMPERATURE

Capacity Rating Conditions: 85°F (29.4°C) Entering Water, 105°F (40.6°C) Condensing, 0°F (0°C) Subcooling

MODEL TXSA	SATURATED SUCTION TEMPERATURE °F (°C)								
	-40 (-40)	-30 (-34.4)	-20 (-28.9)	-15 (-26.1)	-10 (-23.3)	0 (-17.8)			
TXSA005L8 Compressor: KANB-005E	BTU/H (Watts)	730 (210)	1240 (360)	1910 (560)	2310 (680)	2750 (810)	3740 (1100)		
	GPM (L/min)	0.8 (3)	0.8 (3)	0.9 (3.4)	1.0 (3.8)	1.1 (4.2)	1.2 (4.6)		
	PSIG (kPa)	0.5 (3.1)	0.5 (3.1)	0.5 (3.7)	0.6 (4.4)	0.7 (5.1)	0.9 (5.9)		
TXSA008L8 Compressor: KAMB-007E	BTU/H (Watts)	1750 (510)	2360 (690)	3320 (970)	3910 (1150)	4550 (1330)	5940 (1740)		
	GPM (L/min)	0.5 (1.9)	0.6 (2.2)	0.8 (3)	0.9 (3.6)	1.2 (4.4)	1.7 (6.5)		
	PSIG (kPa)	0.2 (1.5)	0.3 (1.9)	0.4 (3.1)	0.6 (4)	0.8 (5.5)	1.5 (10.1)		
TXSA010L8 Compressor: KAJB-010E	BTU/H (Watts)	2210 (650)	3230 (950)	4480 (1310)	5210 (1530)	6010 (1760)	7860 (2300)		
	GPM (L/min)	1.0 (3.8)	1.1 (4.2)	1.2 (4.5)	1.3 (4.9)	1.4 (5.3)	2.1 (8)		
	PSIG (kPa)	0.8 (5.5)	0.9 (6.4)	1.1 (7.3)	1.2 (8.3)	1.3 (9.2)	2.6 (18.1)		
TXSA015L8 Compressor: KALB-015E	BTU/H (Watts)	3260 (960)	4830 (1420)	6700 (1960)	7780 (2280)	8950 (2620)	11660 (3420)		
	GPM (L/min)	1.4 (5.3)	1.5 (5.7)	1.6 (6.1)	1.7 (6.5)	2.1 (7.9)	3.3 (12.4)		
	PSIG (kPa)	0.4 (2.4)	0.4 (2.8)	0.5 (3.1)	0.5 (3.5)	0.7 (5.1)	1.6 (11)		
TXSA020L8 Compressor: EADB-021E	BTU/H (Watts)	3570 (1050)	5240 (1540)	7480 (2190)	8820 (2580)	10320 (3020)	13820 (4050)		
	GPM (L/min)	1.7 (6.4)	1.8 (6.8)	2.0 (7.6)	2.1 (7.9)	2.7 (10.3)	4.7 (17.6)		
	PSIG (kPa)	0.5 (3.5)	0.6 (3.9)	0.7 (4.7)	0.7 (5)	1.2 (8)	2.9 (20.3)		
TXSA021L8 Compressor: EAVB-021E	BTU/H (Watts)	4270 (1250)	6330 (1860)	8810 (2580)	10240 (3000)	11820 (3460)	15420 (4520)		
	GPM (L/min)	1.7 (6.4)	1.7 (6.3)	1.9 (7.1)	2.2 (8.5)	2.8 (10.7)	4.9 (18.5)		
	PSIG (kPa)	0.7 (4.8)	0.7 (4.7)	0.8 (5.4)	1.0 (6.7)	1.4 (9.3)	3.3 (22.5)		
TXSA030L8 Compressor: LAHA-032E	BTU/H (Watts)	5660 (1660)	9130 (2680)	13550 (3970)	16090 (4720)	18870 (5530)	25060 (7340)		
	GPM (L/min)	2.3 (8.7)	2.6 (9.8)	2.8 (10.7)	4.0 (15.3)	5.8 (22)	11.4 (43.2)		
	PSIG (kPa)	1.0 (7.1)	1.2 (8.4)	1.4 (9.5)	2.3 (16.1)	4.2 (28.6)	12.9 (88.9)		
TXSA032L8 Compressor: LACA-032E	BTU/H (Watts)	8130 (2380)	12230 (3580)	17220 (5050)	-	-	-		
	GPM (L/min)	1.8 (6.8)	2.5 (9.6)	5.2 (19.6)	-	-	-		
	PSIG (kPa)	0.7 (5)	1.2 (8.2)	3.5 (23.8)	-	-	-		

CAPACITY DATA - **R407A**

HIGH / MEDIUM TEMPERATURE

Capacity Rating Conditions: 85°F (29.4°C) Entering Water, 110°F (43.3°C) Condensing, 0°F (0°C) Subcooling

MODEL TXZA	SATURATED SUCTION TEMPERATURE °F (°C)										
		-10 (-23.3)	0 (-17.8)	10 (-12.2)	20 (-6.7)	25 (-3.9)	30 (-1.1)	35 (1.7)	40 (4.4)		
TXZA007H8 Compressor: ZB06KAE	BTU/H (Watts)	3200 (940)	4000 (1170)	5000 (1470)	6400 (1880)	7200 (2110)	8000 (2340)	8900 (2610)	9900 (2900)		
	GPM (L/min)	0.7 (2.6)	0.8 (3)	0.9 (3.4)	1.0 (3.6)	1.1 (4.1)	1.3 (4.8)	1.5 (5.7)	1.8 (6.7)		
	PSIG (kPa)	0.4 (3)	0.6 (3.8)	0.7 (4.6)	0.7 (5.1)	0.9 (6.4)	1.2 (8.1)	1.5 (10.4)	2.0 (13.6)		
TXZA008H8 Compressor: ZB07KAE	BTU/H (Watts)	3500 (1030)	4800 (1410)	6200 (1820)	7900 (2320)	8700 (2550)	9600 (2810)	10600 (3110)	11600 (3400)		
	GPM (L/min)	0.7 (2.6)	0.9 (3.4)	1.0 (3.8)	1.4 (5.2)	1.6 (6.1)	1.9 (7.1)	2.2 (8.2)	2.5 (9.5)		
	PSIG (kPa)	0.4 (3)	0.7 (4.6)	0.8 (5.6)	1.3 (9.1)	1.7 (11.6)	2.1 (14.7)	2.7 (18.7)	3.4 (23.7)		
TXZA009H8 Compressor: ZB08KAE	BTU/H (Watts)	4300 (1260)	5800 (1700)	7500 (2200)	9200 (2700)	10100 (2960)	11100 (3250)	12100 (3550)	13100 (3840)		
	GPM (L/min)	1.0 (3.8)	1.2 (4.4)	1.4 (5.3)	1.8 (6.7)	2.0 (7.6)	2.3 (8.7)	2.6 (9.9)	3.0 (11.2)		
	PSIG (kPa)	0.2 (1.2)	0.2 (1.6)	0.4 (2.4)	0.5 (3.8)	0.7 (4.7)	0.9 (5.9)	1.1 (7.4)	1.3 (9.2)		
TXZA010H8 Compressor: ZS09KAE	BTU/H (Watts)	5300 (1550)	6700 (1960)	8300 (2430)	10300 (3020)	11400 (3340)	12700 (3720)	14100 (4130)	15600 (4570)		
	GPM (L/min)	1.1 (4.1)	1.3 (4.8)	1.6 (6)	2.1 (7.8)	2.4 (9.1)	2.8 (10.7)	3.4 (12.8)	4.1 (15.3)		
	PSIG (kPa)	0.2 (1.4)	0.3 (2)	0.4 (3)	0.7 (4.9)	0.9 (6.4)	1.2 (8.6)	1.7 (11.6)	2.3 (15.9)		
TXZA011H8 Compressor: ZS11KAE	BTU/H (Watts)	6400 (1880)	8000 (2340)	10000 (2930)	12300 (3600)	13600 (3990)	15100 (4430)	16800 (4920)	18600 (5450)		
	GPM (L/min)	1.3 (4.9)	1.6 (6.2)	2.1 (8.1)	2.9 (11.1)	3.5 (13.1)	4.1 (15.7)	5.0 (18.8)	6.0 (22.8)		
	PSIG (kPa)	0.3 (2.1)	0.5 (3.2)	0.8 (5.3)	1.3 (9.1)	1.8 (12.1)	2.4 (16.5)	3.3 (22.8)	4.6 (31.9)		
TXZA015H8 Compressor: ZS13KAE	BTU/H (Watts)	7300 (2140)	9200 (2700)	11400 (3340)	14000 (4100)	15600 (4570)	17300 (5070)	19200 (5630)	21300 (6240)		
	GPM (L/min)	1.5 (5.7)	1.7 (6.4)	2.0 (7.6)	2.4 (9)	2.9 (11.1)	3.6 (13.8)	4.6 (17.3)	5.7 (21.7)		
	PSIG (kPa)	0.6 (4.2)	0.7 (4.8)	0.8 (5.8)	1.1 (7.3)	1.4 (9.8)	2.0 (13.7)	2.9 (20)	4.3 (29.8)		
TXZA020H8 Compressor: ZS15KAE	BTU/H (Watts)	8800 (2580)	11000 (3220)	13700 (4020)	16900 (4950)	18800 (5510)	20800 (6100)	23100 (6770)	25600 (7500)		
	GPM (L/min)	1.8 (7)	2.3 (8.5)	2.9 (11)	3.9 (14.7)	4.6 (17.3)	5.4 (20.5)	6.5 (24.5)	7.8 (29.5)		
	PSIG (kPa)	0.8 (5.2)	1.0 (6.9)	1.4 (9.8)	2.2 (15.2)	2.8 (19.5)	3.7 (25.6)	4.9 (34.1)	6.7 (46.3)		
TXZA025H8 Compressor: ZS19KAE	BTU/H (Watts)	9900 (2900)	12500 (3660)	15500 (4540)	19100 (5600)	21200 (6210)	23500 (6890)	26100 (7650)	28900 (8470)		
	GPM (L/min)	1.8 (6.8)	2.0 (7.6)	2.4 (9.1)	2.8 (10.6)	3.2 (12.1)	3.6 (13.6)	3.9 (14.7)	5.0 (19)		
	PSIG (kPa)	0.2 (1.3)	0.3 (2)	0.5 (3.4)	0.7 (5)	1.0 (6.6)	1.2 (8.3)	1.4 (9.5)	2.2 (15.3)		
TXZA030H8 Compressor: ZS21KAE	BTU/H (Watts)	13100 (3840)	16400 (4810)	20400 (5980)	25200 (7390)	27900 (8180)	31000 (9090)	34400 (10080)	38200 (11200)		
	GPM (L/min)	2.2 (8.3)	2.9 (11)	3.3 (12.5)	4.2 (15.7)	5.3 (20.2)	6.8 (25.8)	8.7 (33)	11.1 (42)		
	PSIG (kPa)	0.4 (2.7)	0.8 (5.4)	1.0 (7)	1.6 (10.9)	2.5 (16.9)	3.7 (25.8)	5.6 (39)	8.5 (58.6)		
TXZA035H8 Compressor: ZS26KAE	BTU/H (Watts)	13900 (4070)	17800 (5220)	22500 (6590)	28200 (8260)	31400 (9200)	34900 (10230)	38700 (11340)	42800 (12540)		
	GPM (L/min)	2.5 (9.5)	3.3 (12.5)	4.2 (15.9)	5.9 (22.4)	7.7 (29.2)	9.8 (37.3)	12.4 (46.9)	15.4 (58.4)		
	PSIG (kPa)	0.6 (4)	0.9 (5.9)	1.2 (8.5)	2.1 (14.8)	3.3 (22.8)	5.0 (34.7)	7.5 (52)	11.2 (76.9)		
TXZA040H8 Compressor: ZS29KAE	BTU/H (Watts)	16300 (4780)	20500 (6010)	25400 (7440)	31400 (9200)	34800 (10200)	38600 (11310)	42900 (12570)	47500 (13920)		
	GPM (L/min)	3.0 (11.4)	3.7 (14)	4.2 (16)	6.1 (23)	7.4 (27.9)	9.0 (34.1)	11.1 (41.9)	13.6 (51.7)		
	PSIG (kPa)	1.1 (7.5)	1.3 (8.8)	1.4 (9.9)	2.2 (15.1)	2.9 (20.1)	4.0 (27.8)	5.8 (39.7)	8.5 (58.3)		
TXZA045H8 Compressor: ZS33KAE	BTU/H (Watts)	18500 (5420)	23300 (6830)	28900 (8470)	35600 (10430)	39500 (11580)	43900 (12870)	48700 (14270)	54000 (15830)		
	GPM (L/min)	3.3 (12.5)	4.6 (17.4)	5.8 (21.9)	8.4 (31.9)	10.3 (38.9)	12.6 (47.5)	15.4 (58.3)	18.9 (71.7)		
	PSIG (kPa)	1.2 (8)	1.6 (10.8)	2.1 (14.1)	3.6 (24.9)	5.0 (34.8)	7.2 (50)	10.6 (73.3)	15.8 (109)		
TXZA050H8 Compressor: ZB38KCE	BTU/H (Watts)	19600 (5740)	25800 (7560)	33300 (9760)	42200 (12370)	47200 (13830)	52500 (15390)	58100 (17030)	64200 (18820)		
	GPM (L/min)	3.6 (13.6)	3.9 (14.8)	5.8 (21.9)	9.0 (33.9)	11.2 (42.2)	13.9 (52.5)	17.1 (64.9)	21.1 (79.7)		
	PSIG (kPa)	2.3 (15.9)	2.4 (16.5)	2.9 (20.2)	4.0 (27.6)	4.9 (33.6)	6.1 (42.1)	7.8 (53.8)	10.1 (69.9)		
TXZA060H8 Compressor: ZB45KCE	BTU/H (Watts)	22500 (6590)	29500 (8650)	38100 (11170)	48300 (14160)	54000 (15830)	60100 (17610)	66700 (19550)	73500 (21540)		
	GPM (L/min)	4.2 (15.9)	4.9 (18.5)	5.9 (22.4)	9.5 (35.8)	12.0 (45.3)	15.1 (57.2)	18.9 (71.7)	23.5 (89)		
	PSIG (kPa)	0.3 (1.7)	0.5 (3.2)	0.8 (5.5)	2.2 (15.1)	3.4 (23.4)	5.1 (35.5)	7.6 (52.7)	11.2 (77.1)		

NOTES:

- Above ratings are based on mean temperature.
- To convert to dew point ratings, use 0.95 multiplier.

Capacity Rating Conditions: 85°F (29.4°C) Entering Water, 105°F (40.6°C) Condensing, 0°F (0°C) Subcooling

MODEL TXZA		SATURATED SUCTION TEMPERATURE °F (°C)									
		-40 (-40)	-35 (-37.2)	-30 (-34.4)	-25 (-31.7)	-20 (-28.9)	-15 (-26.1)	-10 (-23.3)	-5 (-20.6)		
TXZA008L8 Compressor: ZF03KAE	BTU/H (Watts)	1800 (530)	2000 (590)	2300 (670)	2500 (730)	2900 (850)	3200 (940)	3600 (1060)	4100 (1200)		
	GPM (L/min)	1.0 (3.6)	1.0 (3.6)	1.0 (3.6)	1.0 (3.7)	1.0 (3.9)	1.1 (4.2)	1.2 (4.7)	1.4 (5.5)		
	PSIG (kPa)	0.6 (4.1)	0.6 (4.1)	0.6 (4.1)	0.6 (4.3)	0.7 (4.6)	0.8 (5.2)	0.9 (6.2)	1.1 (7.8)		
TXZA010L8 Compressor: ZF04KAE	BTU/H (Watts)	2200 (640)	2500 (730)	2900 (850)	3300 (970)	3800 (1110)	4400 (1290)	5000 (1470)	5800 (1700)		
	GPM (L/min)	1.0 (3.7)	1.0 (3.9)	1.1 (4.2)	1.3 (4.8)	1.5 (5.7)	1.8 (6.9)	2.3 (8.6)	2.9 (10.9)		
	PSIG (kPa)	0.6 (4.3)	0.7 (4.6)	0.8 (5.2)	0.9 (6.3)	1.2 (8.2)	1.6 (11.3)	2.3 (16.2)	3.5 (23.9)		
TXZA015L8 Compressor: ZF05KAE	BTU/H (Watts)	2600 (760)	3000 (880)	3400 (1000)	3900 (1140)	4600 (1350)	5200 (1520)	6000 (1760)	6800 (1990)		
	GPM (L/min)	0.7 (2.5)	0.7 (2.7)	0.8 (3)	0.9 (3.5)	1.1 (4.1)	1.3 (4.9)	1.6 (6)	1.9 (7.3)		
	PSIG (kPa)	0.4 (2.7)	0.5 (3.1)	0.5 (3.8)	0.7 (4.8)	0.9 (6.2)	1.2 (8.3)	1.6 (11.3)	2.2 (15.5)		
TXZA020L8 Compressor: ZF07KAE	BTU/H (Watts)	4300 (1260)	5000 (1470)	5700 (1670)	6500 (1900)	7400 (2170)	8300 (2430)	9400 (2750)	10600 (3110)		
	GPM (L/min)	1.6 (5.9)	1.8 (6.6)	2.0 (7.6)	2.3 (8.8)	2.7 (10.3)	3.2 (12.1)	3.8 (14.3)	4.5 (17.1)		
	PSIG (kPa)	0.4 (2.9)	0.5 (3.7)	0.7 (4.7)	0.9 (6)	1.1 (7.9)	1.5 (10.5)	2.1 (14.2)	2.8 (19.3)		
TXZA025L8 Compressor: ZF08K4E	BTU/H (Watts)	4900 (1440)	5600 (1640)	6500 (1900)	7500 (2200)	8500 (2490)	9700 (2840)	10900 (3190)	12200 (3580)		
	GPM (L/min)	1.5 (5.8)	1.5 (5.8)	1.6 (6.1)	1.8 (6.7)	2.0 (7.7)	2.5 (9.4)	3.1 (11.8)	4.0 (15)		
	PSIG (kPa)	0.6 (4.4)	0.6 (4.3)	0.7 (4.5)	0.7 (5)	0.9 (6)	1.1 (7.7)	1.6 (10.7)	2.3 (15.7)		
TXZA030L8 Compressor: ZF09K4E	BTU/H (Watts)	5500 (1610)	6300 (1850)	7200 (2110)	8400 (2460)	9600 (2810)	10900 (3190)	12200 (3580)	13600 (3990)		
	GPM (L/min)	1.5 (5.8)	1.6 (6.1)	1.8 (6.7)	2.1 (7.8)	2.5 (9.5)	3.1 (11.9)	3.9 (14.8)	4.8 (18.4)		
	PSIG (kPa)	0.6 (4.4)	0.7 (4.6)	0.7 (5)	0.9 (6)	1.1 (7.8)	1.6 (10.8)	2.2 (15.5)	3.2 (22.2)		
TXZA035L8 Compressor: ZF11K4E	BTU/H (Watts)	6800 (1990)	7800 (2290)	9000 (2640)	10400 (3050)	11900 (3490)	13600 (3990)	15300 (4480)	17000 (4980)		
	GPM (L/min)	2.4 (9)	2.7 (10.3)	3.2 (12)	3.8 (14.3)	4.5 (17.2)	5.4 (20.6)	6.4 (24.4)	7.5 (28.5)		
	PSIG (kPa)	1.1 (7.4)	1.3 (9)	1.6 (11.3)	2.1 (14.7)	2.8 (19.4)	3.7 (25.7)	4.9 (33.8)	6.3 (43.7)		
TXZA045L8 Compressor: ZF13K4E	BTU/H (Watts)	7800 (2290)	8800 (2580)	10100 (2960)	11600 (3400)	13400 (3930)	15300 (4480)	17500 (5130)	19700 (5770)		
	GPM (L/min)	3.0 (11.4)	3.4 (13.1)	4.0 (15.3)	4.8 (18.3)	5.8 (22.1)	7.1 (26.8)	8.6 (32.4)	10.3 (39)		
	PSIG (kPa)	1.5 (10.5)	1.8 (12.8)	2.4 (16.2)	3.1 (21.4)	4.2 (28.9)	5.7 (39.5)	7.9 (54.4)	10.8 (74.6)		
TXZA055L8 Compressor: ZF15K4E	BTU/H (Watts)	9900 (2900)	11100 (3250)	12600 (3690)	14500 (4250)	16500 (4840)	18900 (5540)	21500 (6300)	24200 (7090)		
	GPM (L/min)	2.6 (9.8)	2.8 (10.6)	3.0 (11.4)	3.4 (12.8)	4.5 (16.9)	5.9 (22.2)	7.6 (28.7)	9.7 (36.7)		
	PSIG (kPa)	0.6 (4.2)	0.7 (5)	0.8 (5.8)	1.1 (7.3)	1.8 (12.4)	2.9 (19.9)	4.5 (30.9)	6.8 (46.7)		
TXZA060L8 Compressor: ZF18K4E	BTU/H (Watts)	12000 (3520)	13500 (3960)	15300 (4480)	17500 (5130)	20100 (5890)	22800 (6680)	25900 (7590)	---		
	GPM (L/min)	2.8 (10.7)	3.5 (13.4)	4.6 (17.3)	6.0 (22.6)	7.8 (29.6)	10.1 (38.3)	12.9 (48.9)	---		
	PSIG (kPa)	0.7 (5)	1.2 (8.1)	1.9 (12.9)	3.0 (20.6)	4.7 (32.4)	7.3 (50.1)	11.0 (76.1)	---		

NOTES:

- Above ratings are based on mean temperature.
- To convert to dew point ratings, use 0.95 multiplier.

CAPACITY DATA - R448A
HIGH / MEDIUM TEMPERATURE

Capacity Rating Conditions: 85°F (29.4°C) Entering Water, 110°F (43.3°C) Condensing, 0°F (0°C) Subcooling

MODEL TXZA		SATURATED SUCTION TEMPERATURE °F (°C)									
		-10 (-23.3)	0 (-17.8)	10 (-12.2)	20 (-6.7)	25 (-3.9)	30 (-1.1)	35 (1.7)	40 (4.4)		
TXZA007H8 Compressor: ZB06KAE	BTU/H (Watts)	3200 (940)	4100 (1200)	5300 (1550)	6600 (1930)	7400 (2170)	8200 (2400)	9000 (2640)	9900 (2900)		
	GPM (L/min)	0.7 (2.6)	0.8 (3)	0.9 (3.4)	1.0 (3.8)	1.1 (4.3)	1.3 (5)	1.5 (5.8)	1.8 (6.9)		
	PSIG (kPa)	0.4 (3)	0.6 (3.8)	0.7 (4.6)	0.8 (5.4)	1.0 (6.8)	1.2 (8.5)	1.6 (10.9)	2.0 (14.1)		
TXZA008H8 Compressor: ZB07KAE	BTU/H (Watts)	3900 (1140)	5000 (1470)	6300 (1850)	7900 (2320)	8800 (2580)	9800 (2870)	10800 (3170)	11900 (3490)		
	GPM (L/min)	0.8 (3)	0.9 (3.4)	1.0 (3.9)	1.4 (5.3)	1.6 (6.2)	1.9 (7.3)	2.3 (8.7)	2.7 (10.4)		
	PSIG (kPa)	0.6 (3.8)	0.7 (4.6)	0.8 (5.8)	1.3 (9.3)	1.7 (12)	2.3 (15.6)	3.0 (20.6)	4.0 (27.3)		
TXZA009H8 Compressor: ZB08KAE	BTU/H (Watts)	4600 (1350)	5800 (1700)	7400 (2170)	9300 (2730)	10400 (3050)	11500 (3370)	12700 (3720)	14100 (4130)		
	GPM (L/min)	1.0 (3.9)	1.2 (4.4)	1.4 (5.3)	1.8 (6.8)	2.1 (7.9)	2.4 (9.2)	2.9 (10.8)	3.4 (12.7)		
	PSIG (kPa)	0.2 (1.2)	0.2 (1.6)	0.4 (2.4)	0.6 (3.9)	0.7 (5.1)	1.0 (6.6)	1.3 (8.7)	1.7 (11.5)		
TXZA010H8 Compressor: ZS09KAE	BTU/H (Watts)	5100 (1490)	6300 (1850)	7900 (2320)	9900 (2900)	11000 (3220)	12300 (3600)	13800 (4040)	15400 (4510)		
	GPM (L/min)	1.1 (4.1)	1.2 (4.7)	1.5 (5.8)	2.0 (7.6)	2.4 (8.9)	2.8 (10.6)	3.4 (12.7)	4.1 (15.5)		
	PSIG (kPa)	0.2 (1.4)	0.3 (1.9)	0.4 (2.9)	0.7 (4.7)	0.9 (6.2)	1.2 (8.4)	1.7 (11.5)	2.3 (16.1)		
TXZA011H8 Compressor: ZS11KAE	BTU/H (Watts)	6100 (1790)	7600 (2230)	9500 (2780)	11800 (3460)	13300 (3900)	14800 (4340)	16500 (4840)	18400 (5390)		
	GPM (L/min)	1.3 (4.8)	1.6 (5.9)	2.0 (7.7)	2.8 (10.6)	3.3 (12.6)	4.0 (15.2)	4.9 (18.5)	6.0 (22.6)		
	PSIG (kPa)	0.3 (1.9)	0.4 (3)	0.7 (4.8)	1.2 (8.4)	1.7 (11.4)	2.3 (15.7)	3.2 (22.1)	4.6 (31.5)		
TXZA015H8 Compressor: ZS13KAE	BTU/H (Watts)	7000 (2050)	8700 (2550)	10700 (3140)	13300 (3900)	14900 (4370)	16600 (4860)	18700 (5480)	21000 (6150)		
	GPM (L/min)	1.5 (5.7)	1.7 (6.4)	2.0 (7.6)	2.2 (8.3)	2.7 (10.3)	3.4 (13)	4.4 (16.6)	5.6 (21.3)		
	PSIG (kPa)	0.6 (4.2)	0.7 (4.8)	0.8 (5.8)	0.9 (6.5)	1.3 (8.8)	1.8 (12.4)	2.7 (18.6)	4.2 (28.9)		
TXZA020H8 Compressor: ZS15KAE	BTU/H (Watts)	8400 (2460)	10400 (3050)	13000 (3810)	16300 (4780)	18200 (5330)	20400 (5980)	22700 (6650)	25400 (7440)		
	GPM (L/min)	1.8 (6.8)	2.2 (8.2)	2.8 (10.5)	3.7 (14.1)	4.4 (16.7)	5.3 (20)	6.4 (24.2)	7.8 (29.4)		
	PSIG (kPa)	0.7 (5)	0.9 (6.5)	1.3 (9.3)	2.1 (14.4)	2.7 (18.6)	3.6 (24.6)	4.8 (33.3)	6.7 (46.1)		
TXZA025H8 Compressor: ZS19KAE	BTU/H (Watts)	9400 (2750)	11800 (3460)	14600 (4280)	18100 (5300)	20200 (5920)	22600 (6620)	25400 (7440)	28500 (8350)		
	GPM (L/min)	1.8 (6.8)	2.0 (7.6)	2.4 (9.1)	2.8 (10.6)	3.2 (12.1)	3.6 (13.6)	3.7 (13.9)	4.9 (18.7)		
	PSIG (kPa)	0.2 (1.3)	0.3 (2)	0.5 (3.4)	0.7 (5)	1.0 (6.6)	1.2 (8.3)	1.2 (8.6)	2.1 (14.8)		
TXZA030H8 Compressor: ZS21KAE	BTU/H (Watts)	12500 (3660)	16500 (4840)	21100 (6180)	26400 (7740)	29300 (8590)	32400 (9500)	35800 (10490)	39400 (11550)		
	GPM (L/min)	2.5 (9.5)	3.3 (12.5)	4.2 (15.9)	4.8 (18.2)	6.2 (23.4)	7.8 (29.7)	9.9 (37.4)	12.3 (46.6)		
	PSIG (kPa)	0.6 (3.8)	1.0 (7)	1.6 (11.1)	2.0 (14.1)	3.2 (21.7)	4.7 (32.6)	7.0 (48.2)	10.2 (70.2)		
TXZA035H8 Compressor: ZS26KAE	BTU/H (Watts)	13700 (4020)	17400 (5100)	22300 (6540)	28300 (8290)	31700 (9290)	35400 (10370)	39400 (11550)	43700 (12810)		
	GPM (L/min)	2.5 (9.5)	3.3 (12.5)	4.2 (15.9)	6.0 (22.6)	7.9 (30)	10.3 (38.8)	13.0 (49.3)	16.3 (61.7)		
	PSIG (kPa)	0.6 (4)	0.9 (5.9)	1.2 (8.5)	2.2 (15)	3.5 (23.9)	5.4 (37.2)	8.2 (56.8)	12.3 (85)		
TXZA040H8 Compressor: ZS29KAE	BTU/H (Watts)	15900 (4660)	21000 (6150)	26800 (7850)	33500 (9820)	37200 (10900)	41200 (12070)	45400 (13310)	50000 (14650)		
	GPM (L/min)	3.0 (11.4)	3.7 (14)	4.6 (17.4)	6.9 (26)	8.4 (31.8)	10.3 (38.9)	12.5 (47.5)	15.2 (57.7)		
	PSIG (kPa)	1.1 (7.5)	1.3 (8.8)	1.6 (10.7)	2.6 (18)	3.6 (24.7)	5.1 (34.8)	7.2 (49.8)	10.4 (71.8)		
TXZA045H8 Compressor: ZS33KAE	BTU/H (Watts)	17500 (5130)	23100 (6770)	29600 (8670)	36900 (10810)	41000 (12020)	45400 (13310)	50100 (14680)	55200 (16180)		
	GPM (L/min)	3.3 (12.5)	4.6 (17.4)	5.8 (22)	8.8 (33.3)	10.8 (40.8)	13.2 (49.9)	16.1 (60.8)	19.5 (73.7)		
	PSIG (kPa)	1.2 (8)	1.6 (10.8)	2.1 (14.2)	3.9 (26.6)	5.5 (37.9)	7.9 (54.7)	11.5 (79.4)	16.7 (115.3)		
TXZA050H8 Compressor: ZB38KCE	BTU/H (Watts)	19200 (5630)	25800 (7560)	33200 (9730)	41600 (12190)	46400 (13600)	51500 (15090)	57200 (16760)	63300 (18550)		
	GPM (L/min)	3.6 (13.6)	4.2 (15.9)	5.9 (22.3)	8.9 (33.6)	11.0 (41.5)	13.6 (51.4)	16.8 (63.5)	20.7 (78.5)		
	PSIG (kPa)	2.3 (15.9)	2.5 (17)	2.9 (20.3)	4.0 (27.4)	4.8 (33.1)	6.0 (41.1)	7.6 (52.4)	9.9 (68.5)		
TXZA060H8 Compressor: ZB45KCE	BTU/H (Watts)	22800 (6680)	30700 (9000)	39400 (11550)	49400 (14480)	55100 (16150)	61200 (17940)	67900 (19900)	75200 (22040)		
	GPM (L/min)	4.2 (15.9)	4.9 (18.5)	6.4 (24.2)	10.0 (38)	12.6 (47.8)	15.9 (60.1)	19.9 (75.4)	24.9 (94.3)		
	PSIG (kPa)	0.3 (1.7)	0.5 (3.2)	1.0 (6.7)	2.5 (16.9)	3.7 (25.8)	5.6 (38.7)	8.4 (57.6)	12.4 (85.4)		

NOTES:

- Above ratings are based on mean temperature.
- To convert to dew point ratings, use 0.95 multiplier.

For R449A, use R448A data.

Capacity Rating Conditions: 85°F (29.4°C) Entering Water, 105°F (40.6°C) Condensing, 0°F (0°C) Subcooling

MODEL TXZA		SATURATED SUCTION TEMPERATURE °F (°C)									
		-40 (-40)	-35 (-37.2)	-30 (-34.4)	-25 (-31.7)	-20 (-28.9)	-15 (-26.1)	-10 (-23.3)	-5 (-20.6)		
TXZA008L8 Compressor: ZF03KAE	BTU/H (Watts)	1900 (560)	2100 (620)	2400 (700)	2700 (790)	3000 (880)	3400 (1000)	3800 (1110)	4300 (1260)		
	GPM (L/min)	1.0 (3.6)	1.0 (3.6)	1.0 (3.7)	1.0 (3.8)	1.1 (4.1)	1.2 (4.5)	1.3 (5)	1.6 (5.9)		
	PSIG (kPa)	0.6 (4.1)	0.6 (4.1)	0.6 (4.2)	0.6 (4.4)	0.7 (4.9)	0.8 (5.6)	1.0 (6.8)	1.3 (8.7)		
TXZA010L8 Compressor: ZF04KAE	BTU/H (Watts)	2400 (700)	2700 (790)	3100 (910)	3500 (1030)	4100 (1200)	4600 (1350)	5300 (1550)	6000 (1760)		
	GPM (L/min)	1.0 (3.9)	1.1 (4.1)	1.2 (4.5)	1.4 (5.2)	1.6 (6.2)	2.0 (7.5)	2.5 (9.4)	3.1 (11.8)		
	PSIG (kPa)	0.7 (4.5)	0.7 (5)	0.8 (5.8)	1.0 (7.1)	1.4 (9.4)	1.9 (13)	2.7 (18.6)	4.0 (27.3)		
TXZA015L8 Compressor: ZF05KAE	BTU/H (Watts)	2800 (820)	3200 (940)	3700 (1080)	4200 (1230)	4800 (1410)	5500 (1610)	6300 (1850)	7100 (2080)		
	GPM (L/min)	0.7 (2.6)	0.8 (2.9)	0.9 (3.2)	1.0 (3.7)	1.2 (4.4)	1.4 (5.3)	1.7 (6.4)	2.1 (7.8)		
	PSIG (kPa)	0.4 (2.9)	0.5 (3.4)	0.6 (4.2)	0.8 (5.4)	1.0 (7)	1.3 (9.3)	1.8 (12.6)	2.5 (17.3)		
TXZA020L8 Compressor: ZF07KAE	BTU/H (Watts)	4500 (1320)	5100 (1490)	5900 (1730)	6600 (1930)	7500 (2200)	8500 (2490)	9600 (2810)	10800 (3170)		
	GPM (L/min)	1.6 (6.2)	1.8 (6.9)	2.1 (7.9)	2.4 (9)	2.8 (10.5)	3.3 (12.4)	3.9 (14.8)	4.7 (17.8)		
	PSIG (kPa)	0.5 (3.3)	0.6 (4)	0.7 (5)	0.9 (6.4)	1.2 (8.3)	1.6 (11)	2.2 (15)	3.0 (20.7)		
TXZA025L8 Compressor: ZF08K4E	BTU/H (Watts)	5200 (1520)	6000 (1760)	6900 (2020)	7900 (2320)	9000 (2640)	10100 (2960)	11400 (3340)	12800 (3750)		
	GPM (L/min)	1.5 (5.8)	1.5 (5.8)	1.6 (6.1)	1.8 (6.8)	2.1 (8)	2.6 (9.8)	3.3 (12.4)	4.2 (16)		
	PSIG (kPa)	0.6 (4.3)	0.6 (4.4)	0.7 (4.6)	0.7 (5.2)	0.9 (6.2)	1.2 (8.2)	1.7 (11.6)	2.6 (17.6)		
TXZA030L8 Compressor: ZF09K4E	BTU/H (Watts)	5900 (1730)	6800 (1990)	7700 (2260)	8800 (2580)	10000 (2930)	11200 (3280)	12700 (3720)	14200 (4160)		
	GPM (L/min)	1.6 (5.9)	1.7 (6.3)	1.9 (7.1)	2.2 (8.2)	2.6 (10)	3.3 (12.5)	4.2 (15.8)	5.4 (20.4)		
	PSIG (kPa)	0.6 (4.4)	0.7 (4.7)	0.8 (5.4)	0.9 (6.5)	1.2 (8.4)	1.7 (11.7)	2.5 (17.3)	3.9 (26.7)		
TXZA035L8 Compressor: ZF11K4E	BTU/H (Watts)	7300 (2140)	8400 (2460)	9600 (2810)	10900 (3190)	12400 (3630)	14000 (4100)	15800 (4630)	17700 (5190)		
	GPM (L/min)	2.5 (9.3)	2.8 (10.7)	3.3 (12.5)	3.9 (14.7)	4.6 (17.4)	5.5 (20.7)	6.6 (24.8)	7.9 (29.8)		
	PSIG (kPa)	1.1 (7.8)	1.4 (9.6)	1.7 (12)	2.2 (15.3)	2.9 (19.8)	3.8 (26)	5.1 (34.8)	6.8 (47.2)		
TXZA045L8 Compressor: ZF13K4E	BTU/H (Watts)	8400 (2460)	9600 (2810)	11000 (3220)	12600 (3690)	14400 (4220)	16400 (4810)	18500 (5420)	20900 (6130)		
	GPM (L/min)	4.2 (16)	4.7 (17.7)	5.3 (20.1)	6.1 (23.1)	7.1 (27)	8.4 (31.8)	9.9 (37.6)	11.8 (44.8)		
	PSIG (kPa)	2.5 (17.3)	3.0 (20.4)	3.6 (24.8)	4.5 (31.1)	5.8 (40)	7.6 (52.5)	10.2 (70.1)	13.8 (95)		
TXZA055L8 Compressor: ZF15K4E	BTU/H (Watts)	10600 (3110)	12100 (3550)	13800 (4040)	15700 (4600)	17800 (5220)	20200 (5920)	22800 (6680)	25700 (7530)		
	GPM (L/min)	2.6 (9.8)	3.1 (11.9)	3.8 (14.5)	4.8 (18)	5.9 (22.4)	7.4 (28.1)	9.3 (35.2)	11.6 (44)		
	PSIG (kPa)	0.6 (4.2)	0.9 (6.3)	1.4 (9.4)	2.0 (13.9)	2.9 (20.3)	4.3 (29.7)	6.3 (43.5)	9.2 (63.6)		
TXZA060L8 Compressor: ZF18K4E	BTU/H (Watts)	12900 (3780)	14700 (4310)	16800 (4920)	19100 (5600)	21600 (6330)	24400 (7150)	27500 (8060)	---	---	
	GPM (L/min)	4.8 (18)	5.6 (21.3)	6.7 (25.5)	8.2 (31)	10.1 (38.1)	12.4 (46.9)	15.3 (58.1)	---	---	
	PSIG (kPa)	2.0 (13.9)	2.7 (18.5)	3.7 (25.3)	5.1 (35.2)	7.2 (49.7)	10.3 (71)	14.8 (102.3)	---	---	

NOTES:

- Above ratings are based on mean temperature.
- To convert to dew point ratings, use 0.95 multiplier.

For R449A, use R448A data.

CAPACITY DATA - **R407C**

HIGH / MEDIUM TEMPERATURE

Capacity Rating Conditions: 85°F (29.4°C) Entering Water, 110°F (43.3°C) Condensing, 0°F (0°C) Subcooling

MODEL TXZA	SATURATED SUCTION TEMPERATURE °F (°C)									
		10 (-12.2)	15 (-9.4)	20 (-6.7)	25 (-3.9)	30 (-1.1)	35 (1.7)	40 (4.4)		
TXZA007H8 Compressor: ZB06KAE	BTU/H (Watts)	4790 (1400)	5410 (1590)	6080 (1780)	6800 (1990)	7580 (2220)	8420 (2470)	9340 (2740)		
	GPM (L/min)	0.8 (3)	0.9 (3.4)	0.9 (3.2)	1.0 (3.8)	1.2 (4.6)	1.5 (5.6)	1.8 (6.8)		
	PSIG (kPa)	0.6 (3.8)	0.7 (4.6)	0.6 (4.3)	0.8 (5.6)	1.1 (7.5)	1.5 (10.2)	2.0 (13.9)		
TXZA008H8 Compressor: ZB07KAE	BTU/H (Watts)	5760 (1690)	6490 (1900)	7280 (2130)	8140 (2390)	9050 (2650)	10000 (2930)	11100 (3250)		
	GPM (L/min)	0.9 (3.5)	1.1 (4.1)	1.3 (4.8)	1.5 (5.7)	1.8 (6.8)	2.2 (8.2)	2.7 (10.1)		
	PSIG (kPa)	0.7 (4.8)	0.9 (6.2)	1.2 (8)	1.5 (10.5)	2.0 (13.9)	2.7 (18.9)	3.8 (26.1)		
TXZA009H8 Compressor: ZB08KAE	BTU/H (Watts)	6770 (1980)	7580 (2220)	8480 (2490)	9450 (2770)	10520 (3080)	11700 (3430)	13000 (3810)		
	GPM (L/min)	1.2 (4.7)	1.4 (5.3)	1.6 (6.2)	1.9 (7.3)	2.3 (8.7)	2.7 (10.4)	3.3 (12.6)		
	PSIG (kPa)	0.3 (1.9)	0.4 (2.5)	0.5 (3.2)	0.6 (4.3)	0.9 (5.9)	1.2 (8.1)	1.6 (11.2)		
TXZA010H8 Compressor: ZS09KAE	BTU/H (Watts)	7940 (2330)	8950 (2620)	10010 (2930)	11120 (3260)	12310 (3610)	13600 (3990)	14900 (4370)		
	GPM (L/min)	1.6 (6)	1.9 (7.1)	2.2 (8.5)	2.7 (10.1)	3.2 (12)	3.8 (14.3)	4.5 (16.9)		
	PSIG (kPa)	0.4 (3.1)	0.6 (4.2)	0.8 (5.7)	1.1 (7.8)	1.5 (10.5)	2.0 (14.1)	2.7 (18.8)		
TXZA011H8 Compressor: ZS11KAE	BTU/H (Watts)	9480 (2780)	10680 (3130)	11950 (3500)	13280 (3890)	14690 (4310)	16200 (4750)	17800 (5220)		
	GPM (L/min)	2.3 (8.5)	2.7 (10.3)	3.3 (12.5)	4.0 (15.1)	4.8 (18.1)	5.7 (21.5)	6.7 (25.5)		
	PSIG (kPa)	0.8 (5.7)	1.2 (8)	1.6 (11.2)	2.2 (15.5)	3.1 (21.2)	4.2 (28.8)	5.6 (39)		
TXZA015H8 Compressor: ZS13KAE	BTU/H (Watts)	10830 (3170)	12200 (3580)	13640 (4000)	15170 (4450)	16780 (4920)	18500 (5420)	20300 (5950)		
	GPM (L/min)	1.8 (6.8)	2.0 (7.6)	2.5 (9.7)	3.2 (12.2)	4.0 (15.3)	5.0 (19)	6.2 (23.3)		
	PSIG (kPa)	0.7 (5.1)	0.9 (5.9)	1.2 (8)	1.6 (11.3)	2.4 (16.2)	3.4 (23.5)	4.9 (33.8)		
TXZA020H8 Compressor: ZS15KAE	BTU/H (Watts)	13050 (3820)	14710 (4310)	16450 (4820)	18280 (5360)	20230 (5930)	22300 (6540)	24500 (7180)		
	GPM (L/min)	3.2 (12.1)	3.8 (14.3)	4.5 (17.1)	5.4 (20.3)	6.3 (24)	7.5 (28.3)	8.8 (33.2)		
	PSIG (kPa)	1.6 (11.3)	2.1 (14.7)	2.8 (19.2)	3.6 (25.1)	4.8 (33)	6.3 (43.2)	8.2 (56.5)		
TXZA025H8 Compressor: ZS19KAE	BTU/H (Watts)	14720 (4310)	16590 (4860)	18560 (5440)	20630 (6050)	22820 (6690)	25200 (7390)	27600 (8090)		
	GPM (L/min)	2.2 (8.3)	2.4 (9.1)	2.6 (9.8)	3.0 (11.4)	3.2 (12.1)	4.1 (15.6)	5.2 (19.7)		
	PSIG (kPa)	0.4 (2.7)	0.5 (3.4)	0.6 (4.2)	0.8 (5.8)	1.0 (6.6)	1.6 (10.7)	2.4 (16.3)		
TXZA030H8 Compressor: ZS21KAE	BTU/H (Watts)	19770 (5790)	22290 (6530)	24920 (7300)	27710 (8120)	30650 (8980)	33800 (9910)	37100 (10870)		
	GPM (L/min)	3.0 (11.4)	3.6 (13.6)	4.7 (17.8)	6.1 (23.3)	7.9 (29.9)	10.0 (37.7)	12.4 (47)		
	PSIG (kPa)	0.8 (5.8)	1.2 (8.3)	2.0 (13.6)	3.1 (21.6)	4.8 (33)	7.1 (48.9)	10.3 (71)		
TXZA035H8 Compressor: ZS26KAE	BTU/H (Watts)	21940 (6430)	24720 (7240)	27650 (8100)	30740 (9010)	34010 (9970)	37500 (10990)	41200 (12070)		
	GPM (L/min)	3.2 (12.1)	4.6 (17.5)	6.5 (24.6)	8.6 (32.5)	10.9 (41.4)	13.5 (51.3)	16.5 (62.3)		
	PSIG (kPa)	0.8 (5.7)	1.4 (10)	2.5 (17.1)	4.0 (27.4)	6.0 (41.6)	8.8 (60.8)	12.6 (86.6)		
TXZA040H8 Compressor: ZS29KAE	BTU/H (Watts)	24590 (7210)	27710 (8120)	30990 (9080)	34450 (10100)	38120 (11170)	42000 (12310)	46100 (13510)		
	GPM (L/min)	3.9 (14.8)	4.9 (18.7)	6.2 (23.6)	7.8 (29.5)	9.7 (36.5)	11.8 (44.8)	14.4 (54.5)		
	PSIG (kPa)	1.3 (9.2)	1.7 (11.7)	2.3 (15.7)	3.2 (21.9)	4.5 (31.2)	6.5 (44.9)	9.3 (64.5)		
TXZA045H8 Compressor: ZS33KAE	BTU/H (Watts)	27250 (7990)	30720 (9000)	34350 (10070)	38190 (11190)	42250 (12380)	46600 (13660)	51100 (14980)		
	GPM (L/min)	5.2 (19.8)	6.7 (25.2)	8.4 (31.8)	10.5 (39.6)	12.9 (48.9)	15.8 (59.8)	19.1 (72.3)		
	PSIG (kPa)	1.8 (12.4)	2.5 (17.2)	3.6 (24.6)	5.2 (35.9)	7.6 (52.6)	11.1 (76.8)	16.1 (111)		
TXZA050H8 Compressor: ZB38KCE	BTU/H (Watts)	31430 (9210)	35230 (10320)	39340 (11530)	43810 (12840)	48680 (14270)	54000 (15830)	59700 (17500)		
	GPM (L/min)	5.4 (20.6)	6.9 (26.1)	8.8 (33.2)	11.1 (42.2)	14.1 (53.5)	17.8 (67.5)	22.4 (84.7)		
	PSIG (kPa)	2.8 (19.4)	3.3 (22.6)	3.9 (27.1)	4.9 (33.6)	6.2 (42.9)	8.2 (56.4)	11.0 (75.9)		
TXZA060H8 Compressor: ZB45KCE	BTU/H (Watts)	36990 (10840)	41830 (12260)	47110 (13810)	52830 (15480)	58960 (17280)	65500 (19200)	72500 (21250)		
	GPM (L/min)	5.7 (21.4)	7.5 (28.3)	10.0 (37.7)	13.2 (49.9)	17.3 (65.4)	22.4 (84.7)	28.6 (108.1)		
	PSIG (kPa)	0.7 (4.9)	1.4 (9.5)	2.4 (16.7)	4.0 (27.8)	6.5 (44.9)	10.2 (70.6)	15.8 (108.6)		

NOTE: The capacities shown above are rated at dew point. The dew point is a saturation point and is the condition (pressure and temperature) at which a gas begins to condense. Since R407C has significant glide, the saturated gas and saturated liquid temperatures are not the same. It is important that all components of a system are selected correctly

CAPACITY DATA - R404A R507 HIGH / MEDIUM TEMPERATURE

Capacity Rating Conditions: 85°F (29.4°C) Entering Water, 105°F (40.6°C) Condensing, 0°F (0°C) Subcooling

MODEL TXZA	SATURATED SUCTION TEMPERATURE °F (°C)									
	-10 (-23.3)	0 (-17.8)	10 (-12.2)	20 (-6.7)	25 (-3.9)	30 (-1.1)	35 (1.7)	40 (4.4)		
TXZA007H8 Compressor: ZB06KAE	BTU/H (Watts)	3400 (1000)	4300 (1260)	5400 (1580)	6800 (1990)	7500 (2200)	8400 (2460)	9300 (2730)	10200 (2990)	
	GPM (L/min)	0.7 (2.6)	0.8 (3)	0.9 (3.4)	1.0 (3.7)	1.1 (4.3)	1.3 (5)	1.6 (5.9)	1.9 (7)	
	PSIG (kPa)	0.4 (3)	0.6 (3.8)	0.7 (4.6)	0.8 (5.4)	1.0 (6.7)	1.2 (8.6)	1.6 (11.1)	2.1 (14.6)	
TXZA008H8 Compressor: ZB07KAE	BTU/H (Watts)	3900 (1140)	5100 (1490)	6500 (1900)	8200 (2400)	9200 (2700)	10200 (2990)	11400 (3340)	12700 (3720)	
	GPM (L/min)	0.8 (3)	0.9 (3.4)	1.0 (3.9)	1.4 (5.3)	1.7 (6.3)	2.0 (7.5)	2.4 (9.2)	3.0 (11.2)	
	PSIG (kPa)	0.6 (3.8)	0.7 (4.6)	0.8 (5.7)	1.3 (9.3)	1.8 (12.2)	2.4 (16.3)	3.2 (22.3)	4.5 (30.9)	
TXZA009H8 Compressor: ZB08KAE	BTU/H (Watts)	4700 (1380)	6100 (1790)	7600 (2230)	9400 (2750)	10500 (3080)	11700 (3430)	13000 (3810)	14600 (4280)	
	GPM (L/min)	1.0 (3.8)	1.1 (4.2)	1.3 (4.9)	1.6 (6.1)	1.8 (7)	2.2 (8.2)	2.6 (9.9)	3.2 (12.1)	
	PSIG (kPa)	0.2 (1.2)	0.2 (1.5)	0.3 (2)	0.5 (3.1)	0.6 (4.1)	0.8 (5.4)	1.1 (7.4)	1.5 (10.6)	
TXZA010H8 Compressor: ZS09KAE	BTU/H (Watts)	5300 (1550)	6900 (2020)	8700 (2550)	10700 (3140)	11800 (3460)	13000 (3810)	14300 (4190)	16100 (4720)	
	GPM (L/min)	1.0 (4)	1.2 (4.6)	1.5 (5.8)	2.0 (7.6)	2.3 (8.8)	2.7 (10.2)	3.2 (12)	3.9 (14.9)	
	PSIG (kPa)	0.2 (1.3)	0.3 (1.8)	0.4 (2.8)	0.7 (4.6)	0.9 (6)	1.1 (7.9)	1.5 (10.4)	2.2 (15.1)	
TXZA011H8 Compressor: ZS11KAE	BTU/H (Watts)	6700 (1960)	8400 (2460)	10500 (3080)	13000 (3810)	14400 (4220)	15900 (4660)	17600 (5160)	19500 (5710)	
	GPM (L/min)	1.2 (4.7)	1.6 (5.9)	2.1 (8)	2.9 (11.1)	3.5 (13.2)	4.2 (15.8)	5.0 (19)	6.0 (22.8)	
	PSIG (kPa)	0.3 (1.9)	0.4 (3)	0.7 (5.1)	1.3 (9.1)	1.8 (12.3)	2.4 (16.8)	3.4 (23.2)	4.6 (32)	
TXZA015H8 Compressor: ZS13KAE	BTU/H (Watts)	7600 (2230)	9600 (2810)	11900 (3490)	14800 (4340)	16400 (4810)	18200 (5330)	20100 (5890)	22200 (6510)	
	GPM (L/min)	1.4 (5.3)	1.5 (5.5)	1.8 (6.8)	2.6 (9.8)	3.2 (12)	3.9 (14.9)	4.9 (18.6)	6.1 (23.2)	
	PSIG (kPa)	0.6 (3.9)	0.6 (4.1)	0.7 (5.2)	1.2 (8.1)	1.6 (11.1)	2.3 (15.6)	3.3 (22.8)	4.9 (33.6)	
TXZA020H8 Compressor: ZS15KAE	BTU/H (Watts)	9200 (2700)	11500 (3370)	14400 (4220)	17700 (5190)	19800 (5800)	21900 (6420)	24200 (7090)	26700 (7820)	
	GPM (L/min)	1.8 (6.9)	1.9 (7.2)	2.3 (8.8)	3.2 (12.3)	4.0 (15.2)	5.0 (18.8)	6.2 (23.4)	7.7 (29.2)	
	PSIG (kPa)	0.7 (5.1)	0.8 (5.4)	1.0 (7.2)	1.7 (11.6)	2.3 (16)	3.2 (22.4)	4.6 (31.7)	6.6 (45.6)	
TXZA025H8 Compressor: ZS19KAE	BTU/H (Watts)	10300 (3020)	12900 (3780)	16200 (4750)	19900 (5830)	22100 (6480)	24500 (7180)	27100 (7940)	30000 (8790)	
	GPM (L/min)	2.0 (7.7)	2.2 (8.3)	2.5 (9.5)	2.8 (10.6)	3.0 (11.4)	3.2 (12.2)	4.1 (15.5)	5.3 (19.9)	
	PSIG (kPa)	0.3 (2.1)	0.4 (2.7)	0.6 (3.8)	0.7 (5)	0.8 (5.8)	1.0 (6.7)	1.5 (10.6)	2.4 (16.6)	
TXZA030H8 Compressor: ZS21KAE	BTU/H (Watts)	13800 (4040)	17300 (5070)	21600 (6330)	26600 (7800)	29400 (8620)	32900 (9640)	36400 (10670)	40200 (11780)	
	GPM (L/min)	2.8 (10.6)	3.5 (13.2)	3.1 (11.6)	4.9 (18.6)	6.2 (23.6)	8.3 (31.3)	10.6 (40.1)	13.5 (51)	
	PSIG (kPa)	0.7 (5)	1.1 (7.9)	0.9 (6)	2.1 (14.6)	3.2 (22.2)	5.2 (35.6)	7.9 (54.2)	11.9 (81.8)	
TXZA035H8 Compressor: ZS26KAE	BTU/H (Watts)	15400 (4510)	19300 (5660)	24200 (7090)	29700 (8700)	33100 (9700)	36700 (10760)	40500 (11870)	44800 (13130)	
	GPM (L/min)	2.6 (9.8)	3.0 (11.4)	4.2 (15.7)	6.8 (25.6)	8.4 (31.9)	10.3 (38.8)	12.2 (46.3)	14.6 (55.1)	
	PSIG (kPa)	0.6 (4.2)	0.7 (5.2)	1.2 (8.4)	2.7 (18.4)	3.9 (26.6)	5.4 (37.2)	7.4 (50.8)	10.1 (69.3)	
TXZA040H8 Compressor: ZS29KAE	BTU/H (Watts)	17500 (5130)	21900 (6420)	27500 (8060)	33800 (9910)	37300 (10930)	41700 (12220)	46100 (13510)	50900 (14920)	
	GPM (L/min)	3.4 (13)	4.5 (16.9)	6.1 (23)	8.3 (31.6)	9.8 (37)	11.8 (44.6)	14.0 (52.9)	16.6 (62.7)	
	PSIG (kPa)	1.2 (8.2)	1.5 (10.4)	2.2 (15.2)	3.5 (24.4)	4.6 (31.9)	6.4 (44.4)	8.8 (60.9)	12.2 (84.3)	
TXZA045H8 Compressor: ZS33KAE	BTU/H (Watts)	18600 (5450)	24200 (7090)	30300 (8880)	37200 (10900)	41400 (12130)	45900 (13450)	50800 (14890)	56100 (16440)	
	GPM (L/min)	3.9 (14.7)	5.4 (20.4)	7.5 (28.3)	10.3 (39.1)	12.3 (46.6)	14.6 (55.3)	17.4 (65.8)	20.6 (78.1)	
	PSIG (kPa)	1.3 (9.2)	1.9 (12.9)	3.0 (20.5)	5.1 (35.2)	7.0 (48.1)	9.6 (66.3)	13.4 (92.3)	18.7 (128.9)	
TXZA050H8 Compressor: ZB38KCE	BTU/H (Watts)	22300 (6540)	28100 (8240)	34900 (10230)	42900 (12570)	47300 (13860)	52100 (15270)	57200 (16760)	62600 (18350)	
	GPM (L/min)	4.0 (15.2)	5.1 (19.4)	6.9 (26)	9.6 (36.2)	11.4 (43)	13.5 (51.3)	16.1 (61.1)	19.2 (72.8)	
	PSIG (kPa)	2.4 (16.7)	2.7 (18.8)	3.3 (22.5)	4.2 (29.2)	5.0 (34.2)	5.9 (41)	7.3 (50)	9.0 (62.1)	
TXZA060H8 Compressor: ZB45KCE	BTU/H (Watts)	26500 (7770)	33400 (9790)	41500 (12160)	50900 (14920)	56200 (16470)	61800 (18110)	67900 (19900)	74400 (21800)	
	GPM (L/min)	5.1 (19.4)	6.5 (24.5)	8.5 (32.2)	11.6 (43.8)	13.6 (51.4)	16.0 (60.4)	18.8 (71.2)	22.2 (83.9)	
	PSIG (kPa)	0.5 (3.7)	1.0 (6.8)	1.8 (12.3)	3.2 (22)	4.2 (29.3)	5.7 (39)	7.5 (52)	10.1 (69.4)	

LOW TEMPERATURE

Capacity Rating Conditions: 85°F (29.4°C) Entering Water, 105°F (40.6°C) Condensing, 0°F (0°C) Subcooling

MODEL TXZA	SATURATED SUCTION TEMPERATURE °F (°C)														
		-40 (-40)	-30 (-34.4)	-25 (-31.7)	-20 (-28.9)	-15 (-26.1)	-10 (-23.3)	-5 (-20.6)	0 (-17.8)						
TXZA008L8 Compressor: ZF03KAE	BTU/H (Watts)	2000 (590)	2400 (700)	2700 (790)	3100 (910)	3500 (1030)	3900 (1140)	4400 (1290)	5000 (1470)						
	GPM (L/min)	0.6 (2.2)	0.7 (2.5)	0.7 (2.8)	0.8 (3)	0.9 (3.4)	1.0 (3.8)	1.2 (4.4)	1.3 (5.1)						
	PSIG (kPa)	0.3 (1.9)	0.3 (2.4)	0.4 (2.7)	0.5 (3.1)	0.5 (3.7)	0.7 (4.5)	0.8 (5.5)	1.0 (6.9)						
TXZA010L8 Compressor: ZF04KAE	BTU/H (Watts)	2500 (730)	3200 (940)	3600 (1060)	4100 (1200)	4700 (1380)	5400 (1580)	6100 (1790)	6900 (2020)						
	GPM (L/min)	0.8 (2.9)	0.9 (3.6)	1.1 (4.1)	1.2 (4.7)	1.4 (5.4)	1.7 (6.4)	2.0 (7.5)	2.3 (8.8)						
	PSIG (kPa)	0.4 (2.9)	0.6 (4)	0.7 (4.9)	0.9 (6.1)	1.1 (7.7)	1.4 (9.8)	1.9 (12.8)	2.4 (16.7)						
TXZA015L8 Compressor: ZF05KAE	BTU/H (Watts)	3000 (880)	3900 (1140)	4500 (1320)	5100 (1490)	5800 (1700)	6500 (1900)	7400 (2170)	8200 (2400)						
	GPM (L/min)	0.8 (2.9)	0.9 (3.3)	0.9 (3.4)	1.0 (3.6)	1.1 (4.2)	1.3 (4.9)	1.5 (5.8)	1.8 (6.9)						
	PSIG (kPa)	0.5 (3.5)	0.6 (4.4)	0.8 (5.5)	0.7 (5.1)	0.9 (6.4)	1.2 (8.3)	1.6 (10.8)	2.1 (14.3)						
TXZA020L8 Compressor: ZF07KAE	BTU/H (Watts)	4600 (1350)	6200 (1820)	7100 (2080)	8100 (2370)	9100 (2670)	10200 (2990)	11500 (3370)	12900 (3780)						
	GPM (L/min)	1.1 (4.3)	1.4 (5.4)	1.6 (6.2)	1.9 (7.2)	2.2 (8.5)	2.7 (10.1)	3.2 (12.2)	3.9 (14.8)						
	PSIG (kPa)	0.2 (1.6)	0.4 (2.5)	0.5 (3.2)	0.6 (4.3)	0.8 (5.7)	1.1 (7.8)	1.5 (10.7)	2.2 (14.9)						
TXZA025L8 Compressor: ZF08K4E	BTU/H (Watts)	5700 (1670)	7400 (2170)	8300 (2430)	9300 (2730)	10500 (3080)	11700 (3430)	13100 (3840)	14500 (4250)						
	GPM (L/min)	1.4 (5.3)	1.4 (5.4)	1.6 (6.1)	1.7 (6.2)	1.9 (7.1)	2.2 (8.4)	2.7 (10.2)	3.3 (12.5)						
	PSIG (kPa)	0.6 (4)	0.6 (4)	0.7 (4.5)	0.7 (4.7)	0.8 (5.4)	1.0 (6.6)	1.2 (8.6)	1.7 (11.8)						
TXZA030L8 Compressor: ZF09K4E	BTU/H (Watts)	6300 (1850)	8200 (2400)	9300 (2730)	10400 (3050)	11600 (3400)	13000 (3810)	14500 (4250)	16100 (4720)						
	GPM (L/min)	1.5 (5.7)	1.6 (6.1)	1.7 (6.4)	1.8 (6.9)	2.1 (8.1)	2.6 (9.8)	3.2 (12)	4.0 (15)						
	PSIG (kPa)	0.6 (4.2)	0.7 (4.5)	0.7 (4.8)	0.8 (5.3)	0.9 (6.4)	1.2 (8.2)	1.6 (11.1)	2.3 (15.7)						
TXZA035L8 Compressor: ZF11K4E	BTU/H (Watts)	7900 (2320)	10200 (2990)	11500 (3370)	12900 (3780)	14500 (4250)	16200 (4750)	18100 (5300)	20100 (5890)						
	GPM (L/min)	1.8 (6.8)	2.0 (7.5)	2.2 (8.3)	2.5 (9.5)	3.0 (11.3)	3.6 (13.8)	4.5 (17.1)	5.7 (21.5)						
	PSIG (kPa)	0.7 (5)	0.8 (5.7)	1.0 (6.6)	1.2 (8)	1.5 (10.3)	2.0 (13.8)	2.8 (19.3)	4.0 (27.6)						
TXZA045L8 Compressor: ZF13K4E	BTU/H (Watts)	8800 (2580)	11500 (3370)	13000 (3810)	14700 (4310)	16600 (4860)	18600 (5450)	20800 (6100)	23100 (6770)						
	GPM (L/min)	1.9 (7.3)	2.4 (9.1)	2.8 (10.7)	3.4 (12.9)	4.2 (15.9)	5.3 (20)	6.7 (25.2)	8.4 (31.8)						
	PSIG (kPa)	0.8 (5.5)	1.1 (7.5)	1.4 (9.5)	1.8 (12.5)	2.5 (17.3)	3.6 (24.5)	5.2 (35.7)	7.7 (52.7)						
TXZA055L8 Compressor: ZF15K4E	BTU/H (Watts)	11100 (3250)	14400 (4220)	16200 (4750)	18200 (5330)	20400 (5980)	22900 (6710)	25500 (7470)	28400 (8320)						
	GPM (L/min)	2.2 (8.3)	2.7 (10.2)	2.9 (11)	3.2 (12.1)	3.7 (14)	4.8 (18)	6.2 (23.4)	8.0 (30.4)						
	PSIG (kPa)	0.4 (2.7)	0.7 (4.6)	0.8 (5.4)	1.0 (6.6)	1.3 (8.7)	2.0 (13.9)	3.2 (21.8)	4.9 (33.9)						
TXZA060L8 Compressor: ZF18K4E	BTU/H (Watts)	13400 (3930)	17400 (5100)	19700 (5770)	22100 (6480)	24700 (7240)	27500 (8060)	30600 (8970)	34000 (9960)						
	GPM (L/min)	2.8 (10.6)	3.3 (12.5)	4.0 (15)	5.1 (19.3)	6.6 (24.9)	8.5 (32.2)	11.0 (41.6)	14.1 (53.5)						
	PSIG (kPa)	0.7 (5)	1.0 (7)	1.4 (10)	2.3 (15.6)	3.5 (24.3)	5.4 (37.5)	8.4 (57.8)	12.9 (89)						

MODEL TXHA	COMPRESSOR MODEL NO.	POWER SUPPLY	COMPRESSOR		UNIT		
			RLA	LRA	MCA	MOP	
TXHA015H7-	IS2	CR18K6E-PFV	208-230/1/60	9.4	49.0	11.8	20
	IT3	CR18K6E-TF5	208-230/3/60	5.4	49.0	6.8	15
TXHA020H7-	IS2	CR24K6E-PFV	208-230/1/60	11.2	61.0	14.0	25
	IT3	CR24K6E-TF5	208-230/3/60	6.9	55.0	8.6	15
	IT4	CR24K6E-TFD	460/3/60	3.6	28.0	4.5	15
TXHA025H7-	IS2	CR32K6E-PFV	208-230/1/60	14.4	82.0	18.0	30
	IT3	CR32K6E-TF5	208-230/3/60	9.0	72.0	11.3	20
	IT4	CR32K6E-TFD	460/3/60	4.6	33.0	5.7	15
TXHA030H7-	IS2	CR38K6E-PFV	208-230/1/60	17.1	105.0	21.4	35
	IT3	CR38K6E-TF5	208-230/3/60	10.7	85.0	13.4	20
	IT4	CR38K6E-TFD	460/3/60	5.3	42.0	6.6	15
TXHA035H7-	IS2	CR42K6E-PFV	208-230/1/60	18.3	102.0	22.9	40
	IT3	CR42K6E-TF5	208-230/3/60	12.6	91.0	15.8	25
	IT4	CR42K6E-TFD	460/3/60	5.7	42.0	7.1	15
	IT5	CR42K6E-TFE	575/3/60	4.7	39.0	5.9	15
TXHA040H7-	IS2	CR53KQE-PFV	208-230/1/60	26.0	140.0	32.5	50
	IT3	CR53KQE-TF5	208-230/3/60	16.3	107.0	20.4	35
	IT4	CR53KQE-TFD	460/3/60	8.1	55.0	10.1	15
TXHA050H7-	IS2	CRNQ-050E-PFV	208-230/1/60	30.8	142.0	38.5	60
	IT3	CRNQ-050E-TF5	208-230/3/60	19.2	130.0	24.0	40
	IT4	CRNQ-050E-TFD	460/3/60	8.7	65.0	10.8	20
	IT5	CRNQ-050E-TFE	575/3/60	7.1	52.0	8.8	15
TXHA006M8-	IS2	RST45C1E-CAA	115/1/60	9.4	54.5	11.8	20
	IT3	RST45C1E-CAV	208-230/1/60	4.6	26.5	5.8	15
TXHA008M8-	IS2	RST55C1E-CAA	115/1/60	13.5	70.0	16.9	30
	IT3	RST55C1E-CAV	208-230/1/60	6.1	33.7	7.6	15
TXHA009M8-	IS2	RST64C1E-CAA	115/1/60	13.1	77.0	16.4	25
	IT3	RST64C1E-CAV	208-230/1/60	8.1	43.0	10.1	15
TXHA010M8-	IS2	RST70C1E-PFV	208-230/1/60	6.9	46.0	8.6	15
	IT3	RST70C1E-TA5	208-230/3/60	4.9	36.0	6.1	15
TXHA011M8-	IS2	RST80C1E-PFV	208-230/1/60	8.3	46.0	10.4	15
	IT3	RST80C1E-TA5	208-230/3/60	5.1	36.0	6.4	15
TXHA013M8-	IS2	RST97C1E-PFV	208-230/1/60	9.0	51.0	11.3	20
	IT3	RST97C1E-TA5	208-230/3/60	5.4	36.0	6.8	15
TXHA015M6-	IS2	CS10K6E-PFV	208-230/1/60	9.8	56.0	12.3	20
	IT3	CS10K6E-TF5	208-230/3/60	6.7	51.0	8.4	15
	IT4	CS10K6E-TFD	460/3/60	3.2	25.0	4.0	15
TXHA020M6-	IS2	CS12K6E-PFV	208-230/1/60	9.8	56.0	12.3	20
	IT3	CS12K6E-TF5	208-230/3/60	6.7	51.0	8.4	15
TXHA025M6-	IS2	CS14K6E-PFV	208-230/1/60	11.2	61.0	14.0	25
	IT3	CS14K6E-TF5	208-230/3/60	8.2	55.0	10.3	15
	IT4	CS14K6E-TFD	460/3/60	4.2	28.0	5.3	15
TXHA030M6-	IS2	CS18K6E-PFV	208-230/1/60	14.4	82.0	17.9	30
	IT3	CS18K6E-TF5	208-230/3/60	9.4	65.5	11.8	15
	IT4	CS18K6E-TFD	460/3/60	4.2	33.0	5.3	15
TXHA035M6-	IS2	CS20K6E-PFV	208-230/1/60	16.7	96.0	20.8	35
	IT3	CS20K6E-TF5	208-230/3/60	13.3	75.0	16.6	20
	IT4	CS20K6E-TFD	460/3/60	4.6	40.0	5.7	15
TXHA040M6-	IS2	CS27K6E-PFV	208-230/1/60	21.5	121.0	26.8	45
	IT3	CS27K6E-TF5	208-230/3/60	13.7	105.0	17.1	30
	IT4	CS27K6E-TFD	460/3/60	7.6	52.0	9.5	15
TXHA050M6-	IS2	CS33K6E-PFV	208-230/1/60	27.6	125.0	34.5	60
	IT3	CS33K6E-TF5	208-230/3/60	16.8	102.0	21.0	35
	IT4	CS33K6E-TFD	460/3/60	8.8	48.0	11.1	15
TXHA006L6-	IS1	RFT22C1E-CAA	115/1/60	7.1	54.5	8.9	15
	IS2	RFT22C1E-CAV	208-230/1/60	4.7	29.0	5.9	15
TXHA008L6-	IS1	RFT26C1E-CAA	115/1/60	9.7	66.0	12.1	20
	IS2	RFT26C1E-CAV	208-230/1/60	5.8	35.5	7.3	15
TXHA010L6-	IS2	CF04K6E-PFV	208-230/1/60	9.9	59.2	12.4	20
	IT3	CF04K6E-TF5	208-230/3/60	5.7	52.0	7.1	15
TXHA020L6-	IS2	CF06K6E-PFV	208-230/1/60	10.3	59.2	12.8	20
	IT3	CF06K6E-TF5	208-230/3/60	6.3	52.0	7.9	15
TXHA025L6-	IS2	CF09K6E-PFV	208-230/1/60	15.0	87.0	18.8	30
	IT3	CF09K6E-TF5	208-230/3/60	9.2	72.2	11.5	20
	IT4	CF09K6E-TFD	460/3/60	4.9	35.8	6.2	15
TXHA030L6-	IS2	CF12K6E-PFV	208-230/1/60	18.4	105.0	23.0	40
	IT3	CF12K6E-TF5	208-230/3/60	11.0	85.0	13.8	20
	IT4	CF12K6E-TFD	460/3/60	5.9	42.0	7.4	15

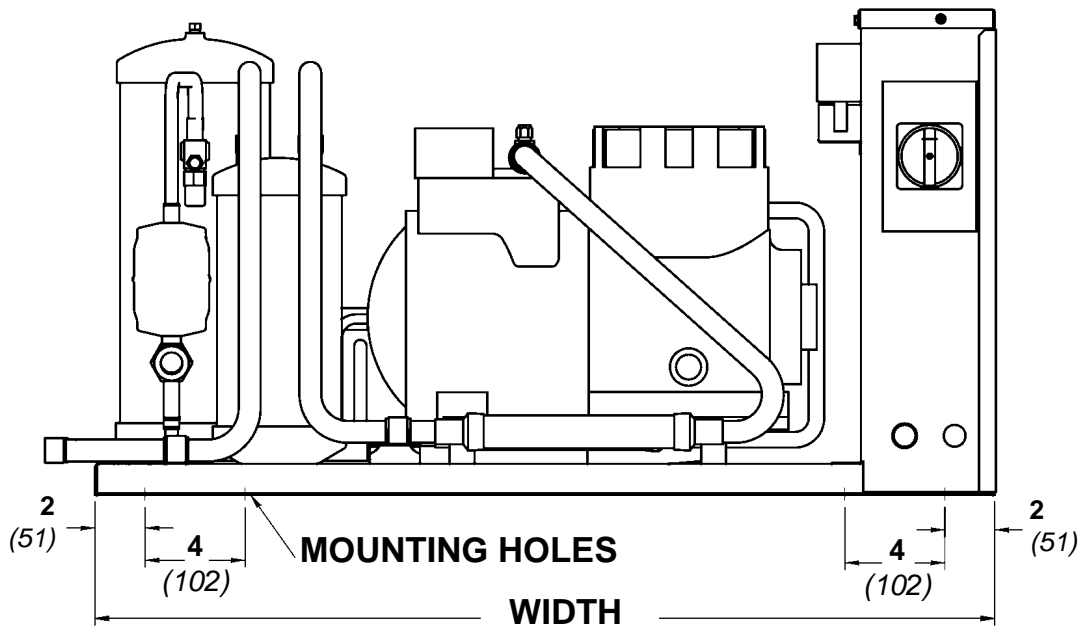
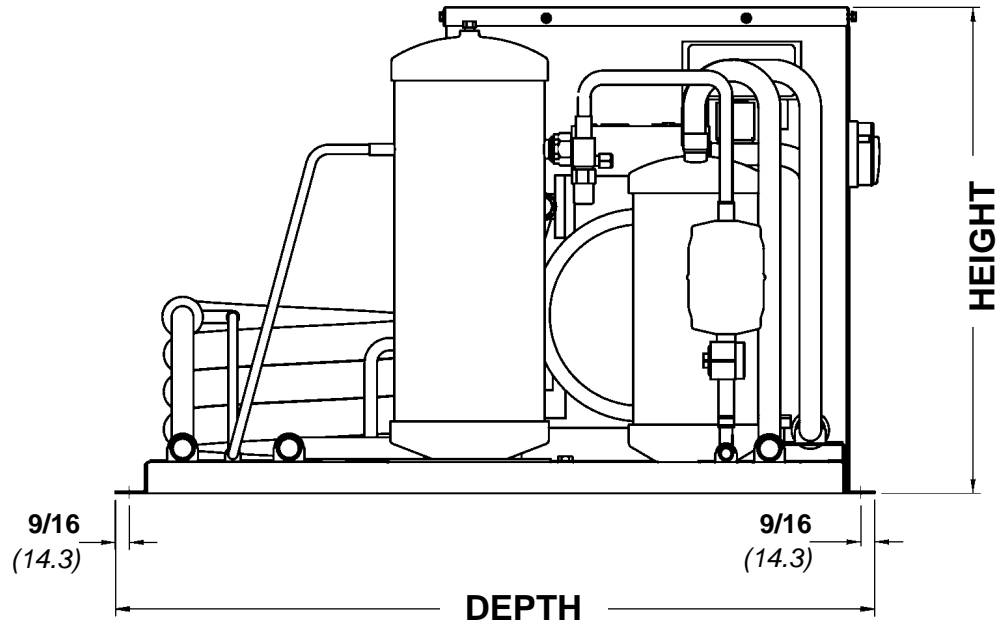
Above listed RLA value is based on UL rating method and may differ from published compressor RLA data.

MODEL TXSA	COMPRESSOR MODEL NO.	POWER SUPPLY	COMPRESSOR		UNIT		
			RLA	LRA	MCA	MOP	
TXSA010M8-	IS2	KARB-010E-CAV	208-230/1/60	7.4	40	9.3	15
	IT3	KARA-010E-TAC	208-230/3/60	4.3	27	5.4	15
TXSA020M8-	IS2	KAKB-021E-CAV	208-230/1/60	10.6	55	13.3	20
	IT3	KAKA-020E-TAC	208-230/3/60	6.8	50	8.5	15
TXSA021M8-	IS2	KAKB-022E-TAD	460/3/60	3.0	25	3.8	15
	IT3	ERCA-021E-TAC	208-230/3/60	8.8	46	11.0	15
	IT4	ERCA-020E-TAD	460/3/60	3.5	23	4.4	15
TXSA030M8-	IS3	ERCA-020E-TAE	575/3/60	3.1	20	3.9	15
	IT3	ERFB-031E-CAB	230/1/60	17.0	86	21.3	35
	IT4	ERFA-031E-TAC	208-230/3/60	12.4	82	15.5	25
TXSA005L6-	IS2	KANB-005E-CAV	208-230/1/60	3.6	24	4.5	15
	IT3	KANA-006E-TAC	208-230/3/60	2.2	13.2	2.8	15
TXSA008L6-	IS2	KAMB-007E-CAV	208-230/1/60	5.6	36	7.0	15
	IT3	KAMA-007E-TAC	208-230/3/60	3.2	19.9	4.0	15
TXSA010L6-	IS2	KAJB-010E-CAV	208-230/1/60	6.9	40	8.6	15
	IT3	KAJA-011E-TAC	208-230/3/60	4.6	27	5.8	15
TXSA015L6-	IS2	KALB-015E-CAV	208-230/1/60	9.9	55	12.4	20
	IT3	KALA-016E-TAC	208-230/3/60	6.6	50	8.3	15
	IT4	KALA-016E-TAD	460/3/60	3.4	25	4.3	15
TXSA020L6-	IS3	EADB-021E-CAB	230/1/60	10.0	58	12.5	20
	IT3	EADA-020E-TAC	208-230/3/60	6.8	46	8.5	15
TXSA021L6-	IS2	EAVB-021E-CAV	208-230/1/60	14.7	102	18.4	30
	IT3	EAVA-021E-TAC	208-230/3/60	7.4	50	9.3	15
	IT4	EAVA-021E-TAD	460/3/60	3.9	26.6	4.9	15
	IT5	EAVA-021E-TAE	575/3/60	3.1	20	3.9	15
TXSA030L6-	IS3	LAHB-032E-CAB	230/1/60	16.7	105	20.9	35
	IT3	LAHA-032E-TAC	208-230/3/60	12.8	112	16.0	25
	IT4	LAHA-032E-TAD	460/3/60	6.0	56	7.5	15
	IT5	LAHA-032E-TAE	575/3/60	4.1	30	5.1	15
TXSA032L6-	IS3	LACB-032E-CAB	230/1/60	15.5	105	19.4	30
	IT3	LACA-032E-TAC	208-230/3/60	12.8	112	16.0	25
	IT4	LACA-032E-TAD	460/3/60	6.0	56	7.5	15

Above listed RLA value is based on UL rating method and may differ from published compressor RLA data.

MODEL TXZA		COMPRESSOR MODEL NO.	POWER SUPPLY	COMPRESSOR		UNIT	
				RLA	LRA	MCA	MOP
TXZA007H8-	IS2	ZB06KAE-PFV	208-230/1/60	6.0	36.0	7.5	15
	IT3	ZB06KAE-TF5	208-230/3/60	4.8	37.8	6.0	15
TXZA008H8-	IS2	ZB07KAE-PFV	208-230/1/60	6.3	48.0	7.9	15
	IT3	ZB07KAE-TF5	208-230/3/60	5.2	37.8	6.5	15
TXZA009H8-	IS2	ZB08KAE-PFV	208-230/1/60	8.0	47.2	10.0	15
	IT3	ZB08KAE-TF5	208-230/3/60	5.3	37.8	6.6	15
TXZA010H8-	IS2	ZS09KAE-PFV	208-230/1/60	10.0	40.3	12.5	20
	IT3	ZS09KAE-TF5	208-230/3/60	8.0	55.4	10.0	15
	IT4	ZS09KAE-TFD	460/3/60	3.8	28	4.8	15
TXZA011H8-	IS2	ZS11KAE-PFV	208-230/1/60	12.6	55	15.8	25
	IT3	ZS11KAE-TF5	208-230/3/60	10.4	58	13.0	20
	IT4	ZS11KAE-TFD	460/3/60	4.3	28	5.4	15
TXZA015H8-	IS2	ZS13KAE-PFV	208-230/1/60	12.0	56	15.0	25
	IT3	ZS13KAE-TF5	208-230/3/60	9.7	58	12.1	20
	IT4	ZS13KAE-TFD	460/3/60	4.8	29	6.0	15
	IT5	ZS13KAE-TFE	575/3/60	3.6	24.5	4.5	15
TXZA020H8-	IS2	ZS15KAE-PFV	208-230/1/60	15.7	68	19.6	35
	IT3	ZS15KAE-TF5	208-230/3/60	10.6	58	13.3	20
	IT4	ZS15KAE-TFD	460/3/60	5.4	29	6.8	15
	IT5	ZS15KAE-TFE	575/3/60	3.9	24	4.9	15
TXZA025H8-	IS2	ZS19KAE-PFV	208-230/1/60	18.0	75	22.5	40
	IT3	ZS19KAE-TF5	208-230/3/60	13.7	73	17.1	30
	IT4	ZS19KAE-TFD	460/3/60	6.5	38	8.1	15
	IT5	ZS19KAE-TFE	575/3/60	4.3	28	5.4	15
TXZA030H8-	IS2	ZS21KAE-PFV	208-230/1/60	23.2	112	29.0	45
	IT3	ZS21KAE-TF5	208-230/3/60	15.2	93	19.0	30
	IT4	ZS21KAE-TFD	460/3/60	6.9	48	8.6	15
	IT5	ZS21KAE-TFE	575/3/60	5.8	33	7.3	15
TXZA035H8-	IS2	ZS26KAE-PFV	208-230/1/60	23.6	104	29.5	50
	IT3	ZS26KAE-TF5	208-230/3/60	15.5	93	19.4	30
	IT4	ZS26KAE-TFD	460/3/60	6.9	48	8.6	15
	IT5	ZS26KAE-TFE	575/3/60	6.4	38	8.0	15
TXZA040H8-	IS2	ZS29KAE-PFV	208-230/1/60	26.1	137	32.6	50
	IT3	ZS29KAE-TF5	208-230/3/60	20.5	114	25.6	45
	IT4	ZS29KAE-TFD	460/3/60	9.4	58	11.8	20
	IT5	ZS29KAE-TFE	575/3/60	5.8	43	7.3	15
TXZA045H8-	IS2	ZS33KAE-PFV	208-230/1/60	25.6	146	32.0	50
	IT3	ZS33KAE-TF5	208-230/3/60	22.3	114	27.9	50
	IT4	ZS33KAE-TFD	460/3/60	10.0	52	12.5	20
	IT5	ZS33KAE-TFE	575/3/60	6.9	39.5	8.6	15
TXZA050H8-	IS2	ZB38KCE-PFV	208-230/1/60	31.1	175	38.9	70
	IT3	ZB38KCE-TF5	208-230/3/60	22.1	128	27.6	45
	IT4	ZB38KCE-TFD	460/3/60	9.6	63	12.0	20
	IT5	ZB38KCE-TFE	575/3/60	7.1	50	8.9	15
TXZA060H8-	IT3	ZB45KCE-TF5	208-230/3/60	22.5	156	28.1	50
	IT4	ZB45KCE-TFD	460/3/60	11.5	75	14.4	25
	IT5	ZB45KCE-TFE	575/3/60	7.9	54	9.9	15

MODEL TXZA		COMPRESSOR MODEL NO.	POWER SUPPLY	COMPRESSOR		UNIT	
				RLA	LRA	MCA	MOP
TXZA008L8-	IS2	ZF03KAE-PFV	208-230/1/60	6.1	43	7.6	15
	IT3	ZF03KAE-TF5	208-230/3/60	4.1	32	5.1	15
TXZA010L8-	IS2	ZF04KAE-PFV	208-230/1/60	7.4	40	9.3	15
	IT3	ZF04KAE-TF5	208-230/3/60	6.6	55	8.3	15
TXZA015L8-	IS2	ZF05KAE-PFV	208-230/1/60	8.7	55	10.9	15
	IT3	ZF05KAE-TF5	208-230/3/60	7.4	58	9.3	15
TXZA020L8-	IS2	ZF07KAE-PFV	208-230/1/60	13.9	75	17.4	30
	IT3	ZF07KAE-TF5	208-230/3/60	8.6	58	10.8	15
TXZA025L8-	IS2	ZF08K4E-PFV	208-230/1/60	16.4	73	20.5	35
	IT3	ZF08K4E-TF5	208-230/3/60	9.6	63	12.0	20
	IT4	ZF08K4E-TFD	460/3/60	5.0	31	6.3	15
TXZA030L8-	IS2	ZF09K4E-PFV	208-230/1/60	16.4	88	20.5	35
	IT3	ZF09K4E-TF5	208-230/3/60	11.1	77	13.9	20
	IT4	ZF09K4E-TFD	460/3/60	5.0	39	6.3	15
	IT5	ZF09K4E-TFE	575/3/60	4.3	31	5.4	15
TXZA035L8-	IS2	ZF11K4E-PFV	208-230/1/60	20.8	109	26.0	45
	IT3	ZF11K4E-TF5	208-230/3/60	14.2	88	17.8	25
	IT4	ZF11K4E-TFD	460/3/60	7.1	44	8.9	15
	IT5	ZF11K4E-TFE	575/3/60	5.0	34	6.3	15
TXZA045L8-	IS2	ZF13K4E-PFV	208-230/1/60	26.8	129	33.5	50
	IT3	ZF13K4E-TF5	208-230/3/60	15.0	99	18.8	30
	IT4	ZF13K4E-TFD	460/3/60	8.2	49.5	10.3	15
	IT5	ZF13K4E-TFE	575/3/60	8.2	40	10.3	15
TXZA055L8-	IS2	ZF15K4E-PFV	208-230/1/60	31.8	169	39.8	60
	IT3	ZF15K4E-TF5	208-230/3/60	21.4	123	26.8	40
	IT4	ZF15K4E-TFD	460/3/60	9.6	62	12.0	20
	IT5	ZF15K4E-TFE	575/3/60	7.9	50	9.9	15
TXZA060L8-	IT3	ZF18K4E-TF5	208-230/3/60	23.9	156	29.9	50
	IT4	ZF18K4E-TFD	460/3/60	9.3	75	11.6	20
	IT5	ZF18K4E-TFE	575/3/60	7.9	54	9.9	15



REFER TO NEXT PAGE FOR DIMENSIONAL DATA FOR SPECIFIC MODELS

TXH**DIMENSIONAL DATA****60Hz**

MODEL TXHA	WIDTH		DEPTH		HEIGHT	
	Inches	mm	Inches	mm	Inches	mm
TXHA015H7	36 3/8	924	30 3/8	772	19 1/2	495
TXHA020H7	36 3/8	924	30 3/8	772	19 1/2	495
TXHA025H7	36 3/8	924	30 3/8	772	19 1/2	495
TXHA030H7	43 7/8	1114	32 7/8	835	30	762
TXHA035H7	43 7/8	1114	32 7/8	835	30	762
TXHA040H7	43 7/8	1114	32 7/8	835	30	762
TXHA050H7	43 7/8	1114	32 7/8	835	30	762
TXHA006M8	24 7/8	632	30 3/8	772	19	483
TXHA008M8	24 7/8	632	30 3/8	772	19	483
TXHA009M8	24 7/8	632	30 3/8	772	19	483
TXHA010M8	24 7/8	632	30 3/8	772	19	483
TXHA011M8	24 7/8	632	30 3/8	772	19	483
TXHA013M8	36 3/8	924	30 3/8	772	19 1/2	495
TXHA015M6	36 3/8	924	30 3/8	772	19 1/2	495
TXHA020M6	36 3/8	924	30 3/8	772	19 1/2	495
TXHA025M6	36 3/8	924	30 3/8	772	19 1/2	495
TXHA030M6	43 7/8	1114	32 7/8	835	30	762
TXHA035M6	43 7/8	1114	32 7/8	835	30	762
TXHA040M6	43 7/8	1114	32 7/8	835	30	762
TXHA050M6	43 7/8	1114	32 7/8	835	30	762
TXHA006L6	24 7/8	632	30 3/8	772	19	483
TXHA008L6	24 7/8	632	30 3/8	772	19	483
TXHA010L6	24 7/8	632	30 3/8	772	19	483
TXHA020L6	24 7/8	632	30 3/8	772	19	483
TXHA025L6	36 3/8	924	30 3/8	772	19 1/2	495
TXHA030L6	36 3/8	924	30 3/8	772	19 1/2	495

TXS**DIMENSIONAL DATA****60Hz**

MODEL TXSA	WIDTH		DEPTH		HEIGHT	
	Inches	mm	Inches	mm	Inches	mm
TXSA010M8	24 7/8	632	30 3/8	772	19	483
TXSA020M8	36 3/8	924	30 3/8	772	19 1/2	495
TXSA021M8	36 3/8	924	30 3/8	772	19 1/2	495
TXSA030M8	43 7/8	1114	32 7/8	835	30	762
TXSA005L6	24 7/8	632	30 3/8	772	16 1/2	419
TXSA008L6	24 7/8	632	30 3/8	772	16 1/2	419
TXSA010L6	24 7/8	632	30 3/8	772	16 1/2	419
TXSA015L6	36 3/8	924	30 3/8	772	19 1/2	495
TXSA020L6	36 3/8	924	30 3/8	772	19 1/2	495
TXSA021L6	36 3/8	924	30 3/8	772	19 1/2	495
TXSA030L6	43 7/8	1114	32 7/8	835	30	762
TXSA032L6	43 7/8	1114	32 7/8	835	30	762

TXZ**DIMENSIONAL DATA****60Hz**

MODEL TXZA	WIDTH		DEPTH		HEIGHT	
	Inches	mm	Inches	mm	Inches	mm
TXZA007H8	24 7/8	632	30 3/8	772	19	483
TXZA008H8	24 7/8	632	30 3/8	772	19	483
TXZA009H8	24 7/8	632	30 3/8	772	19	483
TXZA010H8	36 3/8	924	30 3/8	772	19 1/2	495
TXZA011H8	36 3/8	924	30 3/8	772	19 1/2	495
TXZA015H8	36 3/8	924	30 3/8	772	19 1/2	495
TXZA020H8	36 3/8	924	30 3/8	772	19 1/2	495
TXZA025H8	36 3/8	924	30 3/8	772	19 1/2	495
TXZA030H8	43 7/8	1114	32 7/8	835	30	762
TXZA035H8	43 7/8	1114	32 7/8	835	30	762
TXZA040H8	43 7/8	1114	32 7/8	835	30	762
TXZA045H8	43 7/8	1114	32 7/8	835	30	762
TXZA050H8	43 7/8	1114	32 7/8	835	30	762
TXZA060H8	43 7/8	1114	32 7/8	835	30	762
TXZA008L8	24 7/8	632	30 3/8	772	19	483
TXZA010L8	24 7/8	632	30 3/8	772	19	483
TXZA015L8	24 7/8	632	30 3/8	772	19	483
TXZA020L8	36 3/8	924	30 3/8	772	19 1/2	495
TXZA025L8	36 3/8	924	30 3/8	772	19 1/2	495
TXZA030L8	36 3/8	924	30 3/8	772	19 1/2	495
TXZA035L8	36 3/8	924	30 3/8	772	19 1/2	495
TXZA045L8	43 7/8	1114	32 7/8	835	30	762
TXZA055L8	43 7/8	1114	32 7/8	835	30	762
TXZA060L8	43 7/8	1114	32 7/8	835	30	762

MODEL TXHA	FIELD CONNECTIONS				WATER CONNECTION		RECEIVER CAPACITY 90% FULL *		SHIPPING WEIGHT	
	SUCTION		LIQUID		In.	mm	Lbs.	Kgs	Lbs.	Kgs
	In.	mm	In.	mm						
TXHA015H7	5/8	16	3/8	10	5/8	16	12.0	5.4	240	109
TXHA020H7	5/8	16	3/8	10	3/4	19	12.0	5.4	240	109
TXHA025H7	7/8	22	3/8	10	7/8	22	15.0	6.8	250	113
TXHA030H7	7/8	22	1/2	13	7/8	22	23.0	10.4	330	150
TXHA035H7	7/8	22	1/2	13	7/8	22	23.0	10.4	330	150
TXHA040H7	1 1/8	29	1/2	13	7/8	22	23.0	10.4	340	154
TXHA050H7	1 1/8	29	1/2	13	1 1/8	29	23.0	10.4	350	159
TXHA006M8	5/8	16	3/8	10	1/2	13	5.4	2.4	120	54
TXHA008M8	5/8	16	3/8	10	1/2	13	5.4	2.4	120	54
TXHA009M8	5/8	16	3/8	10	1/2	13	5.4	2.4	120	54
TXHA010M8	5/8	16	3/8	10	1/2	13	5.4	2.4	140	64
TXHA011M8	5/8	16	3/8	10	1/2	13	5.4	2.4	140	64
TXHA013M8	5/8	16	3/8	10	5/8	16	11.3	5.1	240	109
TXHA015M6	5/8	16	3/8	10	5/8	16	11.3	5.1	240	109
TXHA020M6	5/8	16	3/8	10	5/8	16	11.3	5.1	240	109
TXHA025M6	7/8	22	1/2	13	3/4	19	14.4	6.5	240	109
TXHA030M6	7/8	22	1/2	13	7/8	22	21.5	9.8	320	145
TXHA035M6	7/8	22	1/2	13	7/8	22	21.5	9.8	320	145
TXHA040M6	7/8	22	1/2	13	7/8	22	21.5	9.8	320	145
TXHA050M6	7/8	22	1/2	13	1 1/8	29	21.5	9.8	330	150
TXHA006L6	1/2	13	3/8	10	1/2	13	5.4	2.4	110	50
TXHA008L6	5/8	16	3/8	10	1/2	13	5.4	2.4	160	73
TXHA010L6	7/8	22	3/8	10	1/2	13	5.4	2.4	160	73
TXHA020L6	7/8	22	3/8	10	1/2	13	5.4	2.4	160	73
TXHA025L6	7/8	22	3/8	10	5/8	16	11.3	5.1	240	109
TXHA030L6	7/8	22	1/2	13	3/4	29	14.4	6.5	250	113

*** NOTE ON ALTERNATE REFRIGERANTS:**

* PUBLISHED RECEIVER CAPACITY IS BASED ON **R404A** ON MODELS USING "8" AS REFRIGERANT CODE. FOR ALTERNATE REFRIGERANTS, MULTIPLY **R404A** VALUE BY THE APPROPRIATE VALUE BELOW:

R407A	R407C	R448A	R507	R22
1.10	1.10	1.05	1.00	1.15

- For R449A, use R448A data.

MODEL TXSA	FIELD CONNECTIONS				WATER CONNECTION		RECEIVER CAPACITY 90% FULL *		SHIPPING WEIGHT	
	SUCTION		LIQUID		In.	mm	Lbs.	Kgs	Lbs.	Kgs
	Inches	mm	Inches	mm						
TXSA010M8	5/8	16	3/8	10	1/2	13	5.4	2.4	240	109
TXSA020M8	7/8	22	1/2	13	5/8	16	14	6.4	290	132
TXSA021M8	7/8	22	1/2	13	3/4	19	14	6.3	350	159
TXSA030M8	7/8	22	1/2	13	7/8	22	22	10.0	410	186
TXSA005L6	1/2	13	3/8	10	1/2	13	5.4	2.4	220	100
TXSA008L6	5/8	16	3/8	10	1/2	13	5.4	2.4	240	109
TXSA010L6	7/8	22	3/8	10	1/2	13	5.4	2.4	260	118
TXSA015L6	7/8	22	3/8	10	5/8	16	14	6.4	280	127
TXSA020L6	7/8	22	3/8	10	5/8	16	14	6.4	350	159
TXSA021L6	7/8	22	1/2	13	5/8	16	14	6.4	350	159
TXSA030L6	1 1/8	29	1/2	13	3/4	19	22	10.0	420	191
TXSA032L6	1 1/8	29	1/2	13	3/4	19	22	10.0	420	191

MODEL TXZA	FIELD CONNECTIONS				WATER CONNECTION		RECEIVER CAPACITY 90% FULL *		SHIPPING WEIGHT	
	SUCTION		LIQUID		In.	mm	Lbs.	Kgs	Lbs.	Kgs
	Inches	mm	Inches	mm						
TXZA008H8	5/8	16	3/8	10	1/2	13	5.4	2.4	115	52
TXZA008H8	5/8	16	3/8	10	1/2	13	5.4	2.4	115	52
TXZA009H8	5/8	16	3/8	10	1/2	13	5.4	2.4	115	52
TXZA010H8	5/8	16	3/8	10	5/8	16	5.4	2.4	115	52
TXZA011H8	5/8	16	3/8	10	5/8	16	5.4	2.4	125	57
TXZA015H8	7/8	22	3/8	10	5/8	16	11.0	5.0	150	68
TXZA020H8	7/8	22	3/8	10	3/4	19	11.0	5.0	250	113
TXZA025H8	7/8	22	1/2	13	7/8	22	14.0	6.4	250	113
TXZA030H8	7/8	22	1/2	13	7/8	22	22.0	10.0	265	120
TXZA035H8	7/8	22	1/2	13	7/8	22	22.0	10.0	330	150
TXZA040H8	1 1/8	29	1/2	13	7/8	22	22.0	10.0	330	150
TXZA045H8	1 1/8	29	1/2	13	7/8	22	22.0	10.0	340	154
TXZA050H8	1 1/8	29	1/2	13	7/8	22	22.0	10.0	340	154
TXZA060H8	1 1/8	29	1/2	13	1 1/8	29	22.0	10.0	350	159
TXZA008L8	5/8	16	3/8	10	1/2	13	5.4	2.4	115	52
TXZA008L8	5/8	16	3/8	10	1/2	13	5.4	2.4	115	52
TXZA009L8	5/8	16	3/8	10	1/2	13	5.4	2.4	115	52
TXZA020L8	7/8	22	3/8	10	5/8	16	11.0	5.0	200	91
TXZA025L8	7/8	22	3/8	10	5/8	16	14.0	6.4	220	100
TXZA030L8	7/8	22	3/8	10	5/8	16	14.0	6.4	230	104
TXZA035L8	7/8	22	1/2	13	3/4	19	22.0	10.0	240	109
TXZA045L8	1 1/8	29	1/2	13	3/4	19	22.0	10.0	290	132
TXZA055L8	1 1/8	29	1/2	13	7/8	22	22.0	10.0	290	132
TXZA060L8	1 1/8	29	1/2	13	7/8	22	22.0	10.0	300	136

*** NOTE ON ALTERNATE REFRIGERANTS:**

* PUBLISHED RECEIVER CAPACITY IS BASED ON **R404A** ON MODELS USING "8" AS REFRIGERANT CODE.
FOR ALTERNATE REFRIGERANTS, MULTIPLY **R404A** VALUE BY THE APPROPRIATE VALUE BELOW:

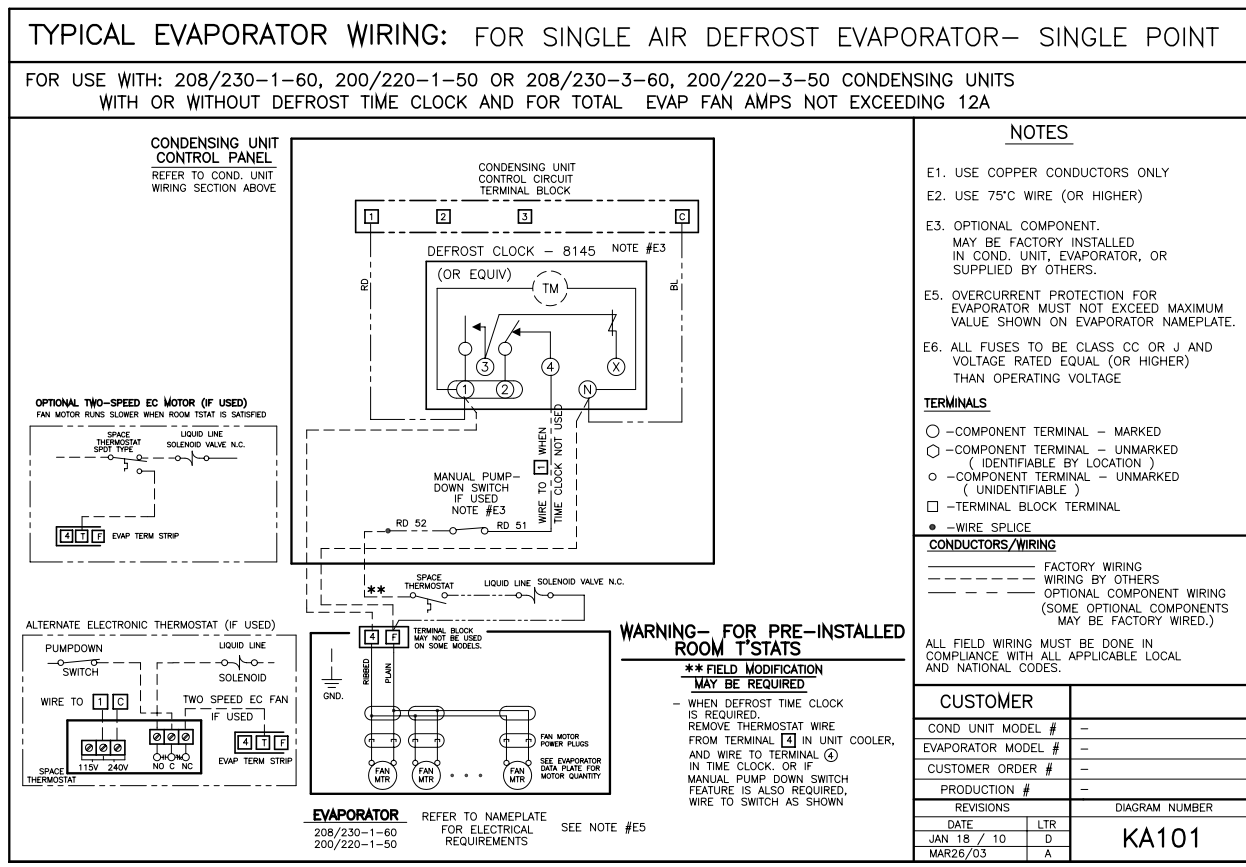
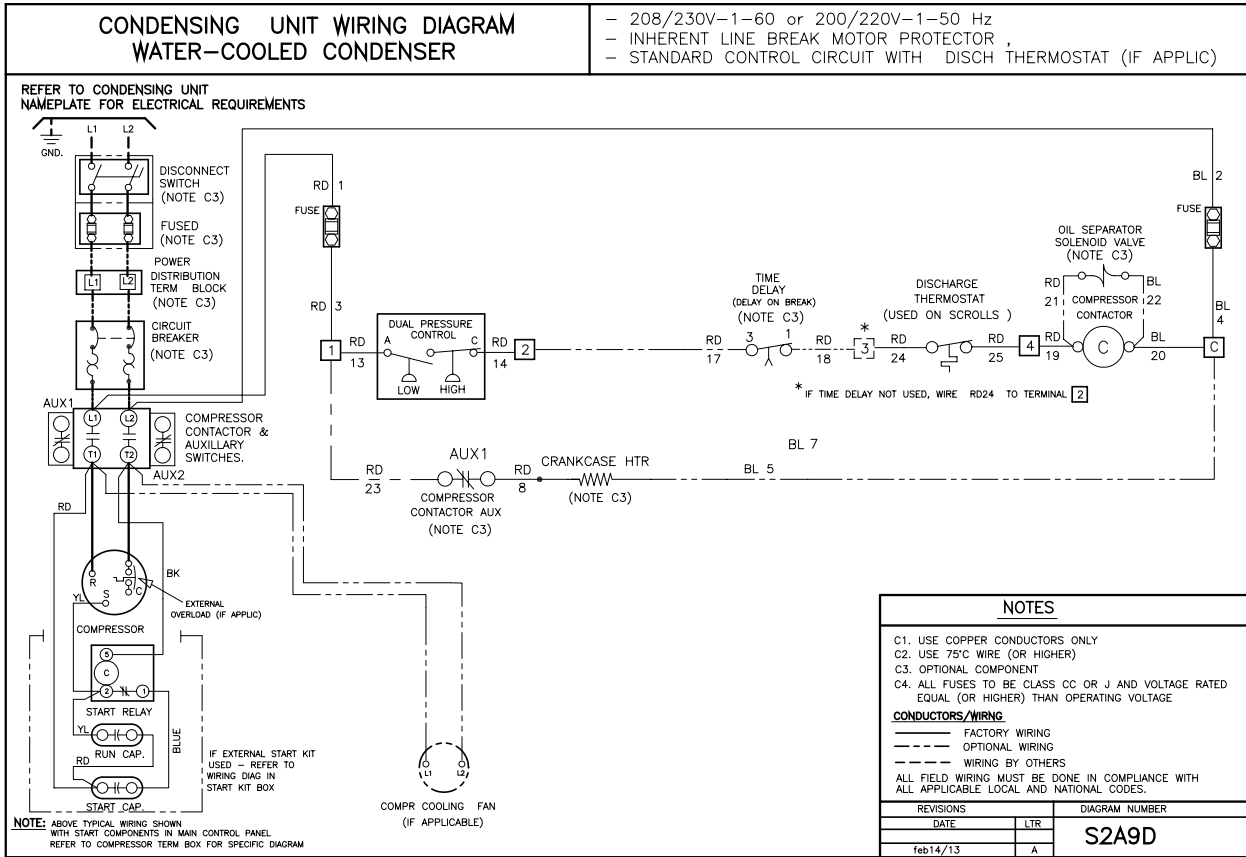
R407A	R407C	R448A	R507	R22
1.10	1.10	1.05	1.00	1.15

- For R449A, use R448A data.

TYPICAL SYSTEM WIRING DIAGRAM

208-230/3/60 Unit

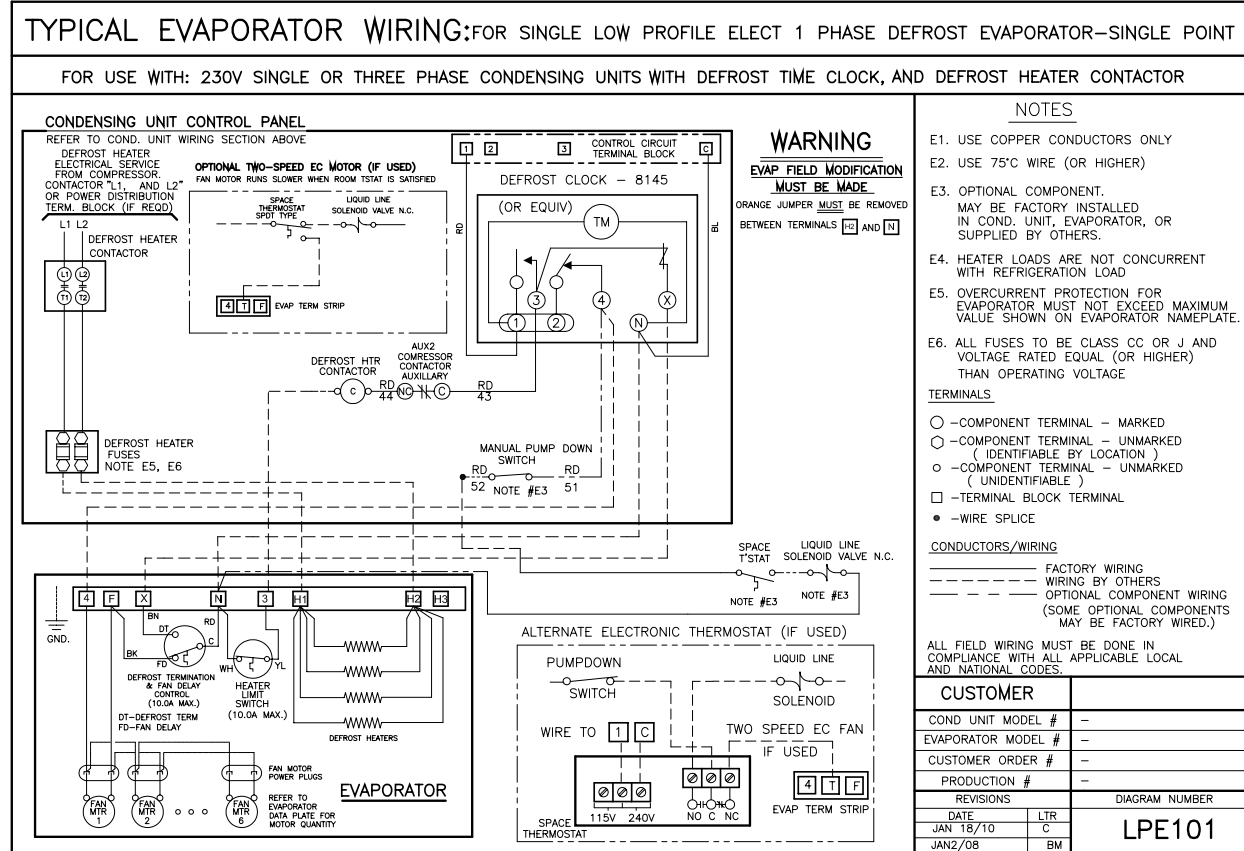
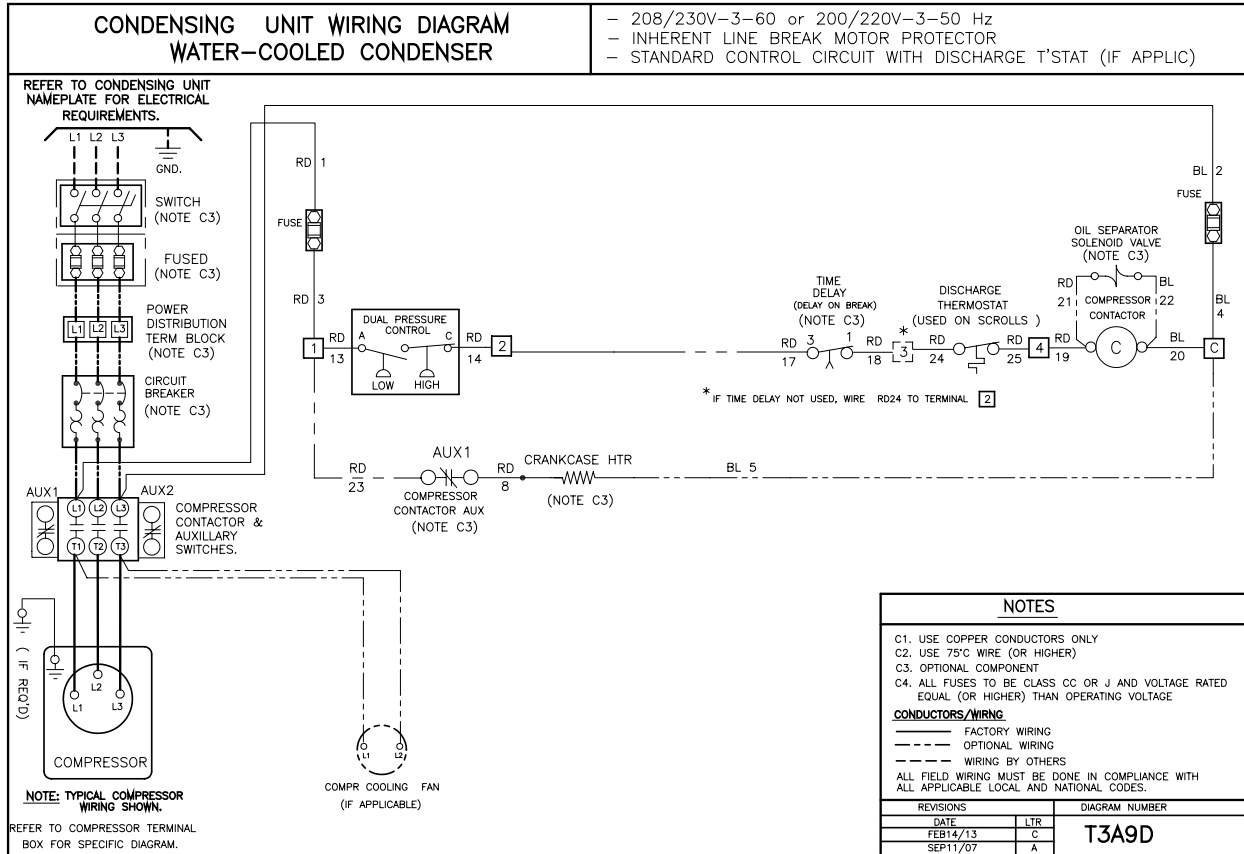
with Single Air Defrost Evaporator



TYPICAL SYSTEM WIRING DIAGRAM

208-230/3/60 Unit

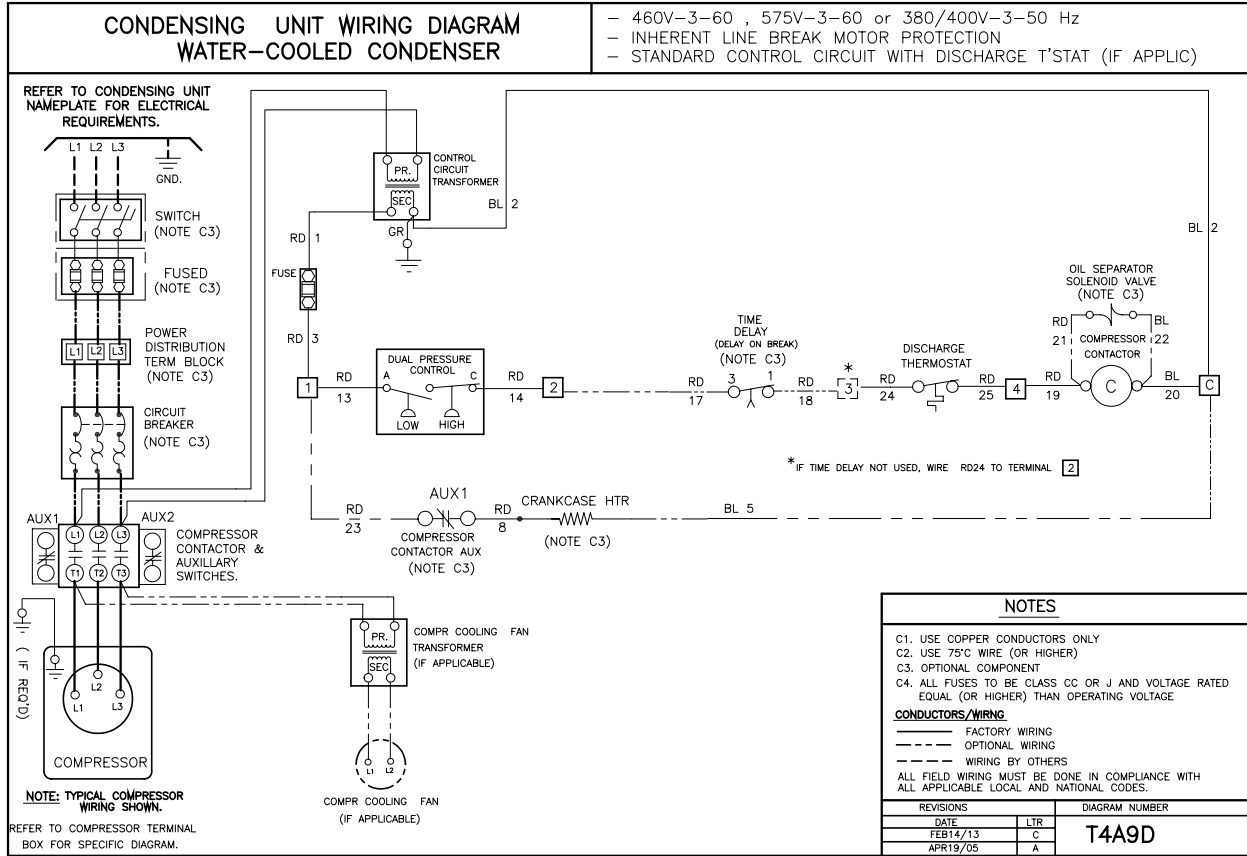
with Single Low Profile Electric Defrost Evaporator



TYPICAL SYSTEM WIRING DIAGRAM

460/3/60 or 575/3/60 Unit

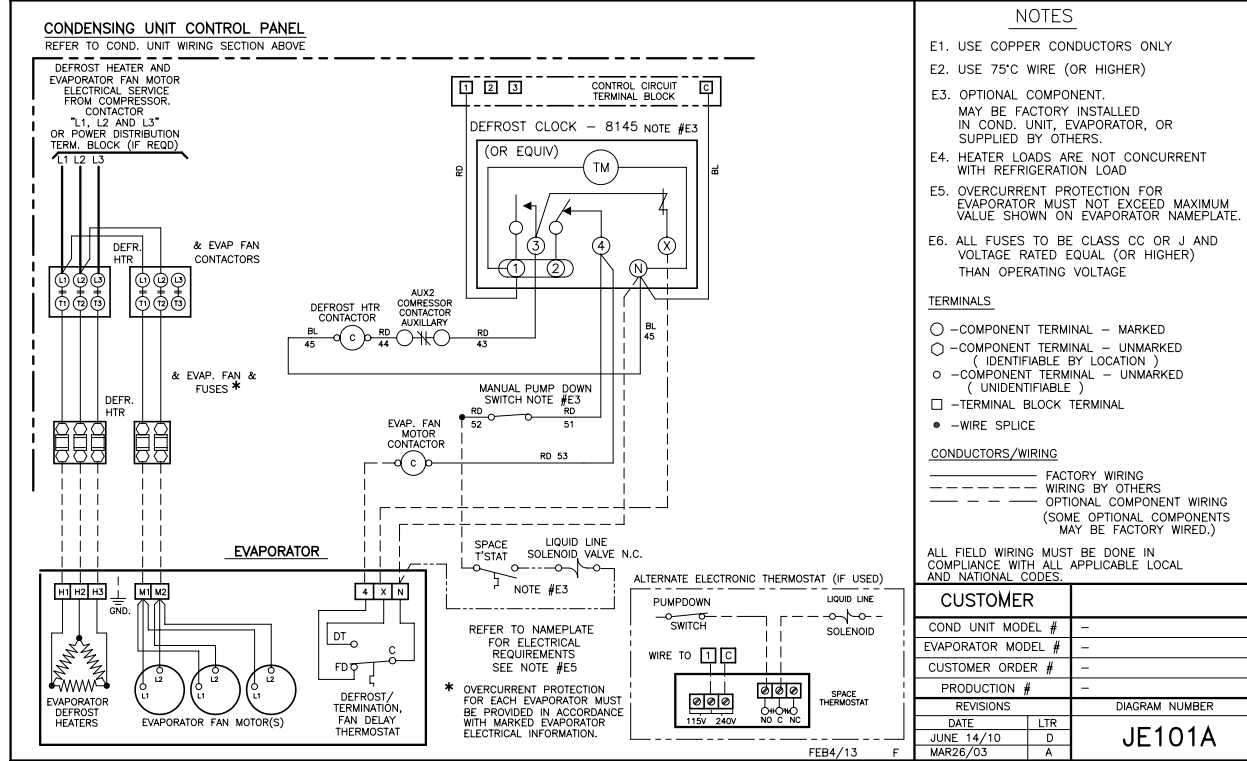
with Single Low Profile Electric Defrost Evaporator



- #### NOTES
- USE COPPER CONDUCTORS ONLY
 - USE 75°C WIRE (OR HIGHER)
 - OPTIONAL COMPONENT
 - ALL FUSES TO BE CLASS CC OR J AND VOLTAGE RATED EQUAL (OR HIGHER) THAN OPERATING VOLTAGE
- CONDUCTORS/WIRING**
- FACTORY WIRING
 - OPTIONAL WIRING
 - WIRING BY OTHERS
- ALL FIELD WIRING MUST BE DONE IN COMPLIANCE WITH ALL APPLICABLE LOCAL AND NATIONAL CODES.

TYPICAL EVAPORATOR WIRING: FOR (1) ONE, THREE PHASE MED PROFILE ELECT DEFRST EVAPORATOR - SINGLE POINT

FOR USE WITH: THREE PHASE CONDENSING UNITS WITH DEFRST TIME CLOCK, & EVAP FAN AND DEFR. HTR. CONTACTORS.



- #### NOTES
- USE COPPER CONDUCTORS ONLY
 - USE 75°C WIRE (OR HIGHER)
 - OPTIONAL COMPONENT. MAY BE FACTORY INSTALLED IN COND. UNIT, EVAPORATOR, OR SUPPLIED BY OTHERS.
 - HEATER LOADS ARE NOT CONCURRENT WITH REFRIGERATION LOAD
 - OVERCURRENT PROTECTION FOR EVAPORATOR MUST NOT EXCEED MAXIMUM VALUE SHOWN ON EVAPORATOR NAMEPLATE.
 - ALL FUSES TO BE CLASS CC OR J AND VOLTAGE RATED EQUAL (OR HIGHER) THAN OPERATING VOLTAGE
- TERMINALS**
- - COMPONENT TERMINAL - MARKED
 - - COMPONENT TERMINAL - UNMARKED (IDENTIFIABLE BY LOCATION)
 - - COMPONENT TERMINAL - UNMARKED (UNIDENTIFIABLE)
 - - TERMINAL BLOCK TERMINAL
 - - WIRE SPLICE
- CONDUCTORS/WIRING**
- FACTORY WIRING
 - WIRING BY OTHERS
 - OPTIONAL COMPONENT WIRING (SOME OPTIONAL COMPONENTS MAY BE FACTORY WIRED.)
- ALL FIELD WIRING MUST BE DONE IN COMPLIANCE WITH ALL APPLICABLE LOCAL AND NATIONAL CODES.

NOTES

NOTES



PRODUCT SUPPORT

web: t-rp.com/tx
email: rcu-wccu@t-rp.com
call: 1-844-893-3222 x523



TROUBLESHOOTING

email: troubleshooting@t-rp.com
call: 1-844-893-3222 x529



SERVICE PARTS

web: t-rp.com/parts
email: parts@t-rp.com
call: 1-844-893-3222 x523



WARRANTY

web: t-rp.com/warranty
email: warranty@t-rp.com
call: 1-844-893-3222 x501



ORDERS

email: orders@t-rp.com
call: 1-844-893-3222 x501



SHIPPING

email: shipping@t-rp.com
call: 1-844-893-3222 x503



Trenton Refrigeration
 Brantford, ON • Longview, TX
 1-800-463-9517 info@t-rp.com www.t-rp.com

