



PRODUCT DATA & SPECIFICATIONS

Bulletin T40-TXC-PDS-5
Part # 1107225

**TX "C" Generation
Condensing Units**

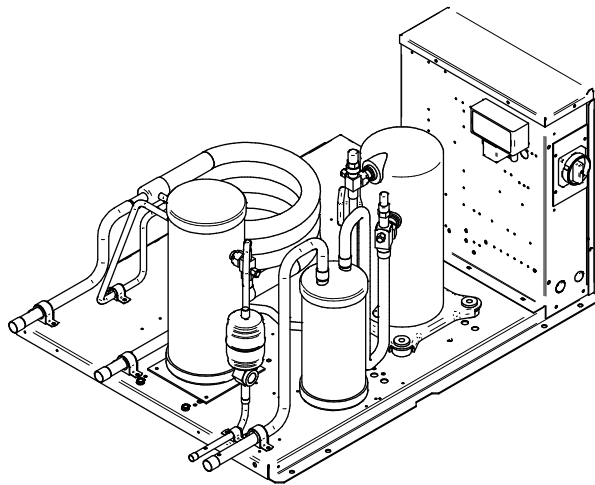
**60
Hz**

**Indoor Water Cooled Coaxial
Hermetic, and Scroll
Condensing Units**

**1/2 to 6 HP -
High, Medium and Low
Temperature Refrigeration**

PRODUCT SUPPORT
 web: www.t-rp.com/tx
 email: rcu-wccu@t-rp.com
 call: 1-844-893-3222 x523

scan:



CONTENTS

	Page
Nomenclature.....	2
Features and Options.....	2
Capacity Data (Imperial and <i>Metric</i>).....	3 - 11
Electrical Data.....	12 - 13
Dimensional Data.....	14 - 15
Specifications.....	16
Wiring Diagrams.....	17 - 19
Product Support Resources.....	BACK

NOMENCLATURE

TX H A 030 L 6 - I T3 C

Product Family

Coaxial Water Cooled Condensing Unit

Compressor Type

H = Hermetic
Z = Scroll

Compressor Manufacturer

A = Copeland

Nominal Horsepower *

006 - 060 = ½ to 6 HP

Application Range

L = Low Temperature
M = Medium Temperature
H = High/Medium Temperature

Series

C = Latest Catalog Series

Unit Electrical Designation*

S2 = 208/230/1/60	S6 = 200-220/1/50
S3 = 230/1/60	S7 = 200/1/50
T3 = 208-230/3/60	T7 = 200-220/3/50
T4 = 460/3/60	T9 = 380-400/3/50
T5 = 575/3/60	

* Subject to compressor availability

Enclosure

I = Indoor

Refrigerant

6 = R404A / R507
8 = R407A / R407C / R448A / R404A / R22

STANDARD FEATURES

- Painted electrical control box with compressor contactor and fused control circuit
- Pre-formed piping
- Brass valves (TXH, TXZ)
- Base valve on suction line (TXH)
- Suction service valve (TXZ)
- Copper tubing secured with cushion clamps
- Hermetics/scrolls rubber mounted (TXH, TXZ)
- Co-Axial condenser
- Receiver with fusible plug and liquid shut off valve
- Adjustable dual high / low pressure control with flex hoses
- Each unit subjected to a thorough leak test with Helium leak-detectors
- Units are shipped with Helium holding charge
- Liquid injection (Low temperature scroll only) (TXZ)
- Water reg valve (shipped loose)

AVAILABLE OPTIONS

- Suction accumulator
- Suction accumulator with boil-out coil
- Discharge line check valve
- Oil separator
- Oil separator c/w oil return filter & solenoid valve
- Receiver inlet ball valve
- Over-sized receiver
- Sealed liquid line filter drier & sight glass
- Ball valve – liquid line (shipped loose)
- Insulated suction lines
- Liquid line solenoid valve (with standard 230 volt coil) – shipped loose
- Compressor circuit breaker
- Defrost heater contactor c/w fuse block
- Evaporator fan contactor c/w fuse block
- Disconnect switch
- Disconnect fusing
- Pump down toggle switch
- Lock out control circuit – Liquid solenoid valve with separate HP and LP controls
- Time delay relay for compressor
- Mechanical time clock
- Electronic voltage/phase monitor

CAPACITY DATA - R448A R449A
MEDIUM TEMPERATURE

Capacity Rating Conditions: Entering Water = 85°F (29.4°C), Condensing = 110°F (43.3°C), Subcooling = 0°F (0°C)

MODEL TXHA		SATURATED SUCTION TEMPERATURE °F (°C)									
		-10 (-23.3)	-5 (-20.6)	0 (-17.8)	5 (-15)	10 (-12.2)	15 (-9.4)	20 (-6.7)	25 (-3.9)		
TXHA006M8 Compressor: RST45C1E	BTU/H (Watts)	2260 (660)	2610 (760)	3010 (880)	3460 (1010)	3980 (1170)	4560 (1340)	5210 (1530)	5950 (1740)		
	GPM (L/min)	1.0 (3.8)	1.0 (3.6)	1.0 (3.6)	1.0 (3.8)	1.1 (4.2)	1.3 (5)	1.6 (6.2)	2.1 (8)		
	PSIG (kPa)	0.6 (4.4)	0.6 (4.1)	0.6 (4.1)	0.6 (4.4)	0.7 (5.1)	1.0 (6.7)	1.4 (9.4)	2.1 (14.2)		
TXHA008M8 Compressor: RST55C1E	BTU/H (Watts)	2730 (800)	3170 (930)	3660 (1070)	4220 (1240)	4850 (1420)	5560 (1630)	6350 (1860)	7250 (2120)		
	GPM (L/min)	0.6 (2.1)	0.6 (2.2)	0.6 (2.3)	0.7 (2.6)	0.8 (3)	1.0 (3.6)	1.2 (4.6)	1.6 (5.9)		
	PSIG (kPa)	0.3 (2)	0.3 (2.1)	0.3 (2.3)	0.4 (2.8)	0.5 (3.7)	0.7 (5.1)	1.1 (7.4)	1.6 (11)		
TXHA009M8 Compressor: RST64C1E	BTU/H (Watts)	3610 (1060)	4200 (1230)	4880 (1430)	5650 (1660)	6510 (1910)	7280 (2130)	8150 (2390)	9070 (2660)		
	GPM (L/min)	0.7 (2.5)	0.8 (2.9)	0.9 (3.5)	1.2 (4.5)	1.4 (5.3)	1.8 (6.8)	2.3 (8.5)	2.8 (10.6)		
	PSIG (kPa)	0.4 (2.7)	0.5 (3.5)	0.7 (4.9)	1.0 (7.2)	1.4 (9.5)	2.0 (13.9)	2.9 (19.9)	4.1 (28.2)		
TXHA010M8 Compressor: RST70C1E	BTU/H (Watts)	3790 (1110)	4430 (1300)	5120 (1500)	5860 (1720)	6640 (1950)	7480 (2190)	8370 (2450)	9320 (2730)		
	GPM (L/min)	0.6 (2.5)	0.8 (2.9)	0.9 (3.5)	1.2 (4.4)	1.4 (5.5)	1.8 (6.9)	2.3 (8.6)	2.8 (10.7)		
	PSIG (kPa)	0.4 (2.6)	0.5 (3.5)	0.7 (4.8)	1.0 (6.9)	1.4 (9.9)	2.1 (14.2)	2.9 (20.2)	4.1 (28.5)		
TXHA011M8 Compressor: RST80C1E	BTU/H (Watts)	4480 (1310)	5200 (1520)	5980 (1750)	6820 (2000)	7710 (2260)	8680 (2540)	9710 (2850)	10810 (3170)		
	GPM (L/min)	0.8 (3.1)	1.0 (3.9)	1.3 (4.9)	1.6 (6.2)	2.1 (7.9)	2.6 (10)	3.3 (12.6)	4.1 (15.6)		
	PSIG (kPa)	0.6 (3.8)	0.7 (5.1)	1.0 (7.2)	1.7 (11.6)	2.4 (16.6)	3.5 (24)	5.0 (34.5)	7.2 (49.7)		
TXHA013M8 Compressor: RST97C1E	BTU/H (Watts)	5130 (1500)	5970 (1750)	6880 (2020)	7840 (2300)	8860 (2600)	9930 (2910)	11050 (3240)	12230 (3580)		
	GPM (L/min)	1.3 (4.9)	1.5 (5.8)	1.8 (7)	2.2 (8.4)	2.7 (10.1)	3.2 (12.2)	3.9 (14.6)	4.6 (17.4)		
	PSIG (kPa)	0.3 (2.1)	0.4 (2.9)	0.6 (4)	0.8 (5.6)	1.1 (7.8)	1.6 (10.7)	2.1 (14.6)	2.9 (19.7)		

CAPACITY DATA - R407C
HIGH / MEDIUM TEMPERATURE

Capacity Rating Conditions: Entering Water = 85°F (29.4°C), Condensing = 110°F (43.3°C), Subcooling = 0°F (0°C)

MODEL TXHA		SATURATED SUCTION TEMPERATURE °F (°C)								
		10 (-12.2)	15 (-9.4)	20 (-6.7)	25 (-3.9)	30 (-1.1)	35 (1.7)	40 (4.4)	45 (7.2)	
TXHA006M8 Compressor: RST45C1E	BTU/H (Watts)	3760 (1100)	4330 (1270)	4950 (1450)	5640 (1650)	6390 (1870)	7190 (2110)	8060 (2360)	8990 (2630)	
	GPM (L/min)	0.9 (3.4)	1.0 (3.7)	1.1 (4.2)	1.3 (4.9)	1.6 (6)	2.0 (7.5)	2.5 (9.4)	3.1 (11.8)	
	PSIG (kPa)	0.5 (3.8)	0.6 (4.2)	0.7 (5.1)	1.0 (6.6)	1.3 (9)	1.9 (12.8)	2.7 (18.5)	3.9 (27.2)	
TXA008M8 Compressor: RST55C1E	BTU/H (Watts)	4620 (1350)	5290 (1550)	6020 (1760)	6820 (2000)	7710 (2260)	8680 (2540)	9740 (2850)	10910 (3200)	
	GPM (L/min)	0.7 (2.6)	0.8 (2.9)	0.9 (3.3)	1.0 (3.9)	1.2 (4.7)	1.5 (5.8)	1.9 (7.1)	2.3 (8.8)	
	PSIG (kPa)	0.4 (2.8)	0.5 (3.5)	0.6 (4.4)	0.8 (5.8)	1.1 (7.8)	1.5 (10.7)	2.2 (14.8)	3.0 (20.9)	
TXA009M8 Compressor: RST64C1E	BTU/H (Watts)	6060 (1780)	6930 (2030)	7890 (2310)	8940 (2620)	10100 (2960)	11010 (3230)	12360 (3620)	13830 (4050)	
	GPM (L/min)	1.0 (3.6)	1.2 (4.4)	1.4 (5.4)	1.8 (6.7)	2.0 (7.7)	2.5 (9.4)	3.1 (11.7)	3.9 (14.6)	
	PSIG (kPa)	0.7 (5.1)	1.0 (7)	1.4 (9.6)	2.0 (13.4)	2.4 (16.8)	3.3 (23.1)	4.8 (33.1)	6.9 (47.8)	
TXHA010M8 Compressor: RST70C1E	BTU/H (Watts)	6260 (1830)	7120 (2090)	8050 (2360)	9070 (2660)	10200 (2990)	11430 (3350)	12790 (3750)	14290 (4190)	
	GPM (L/min)	1.0 (3.7)	1.2 (4.5)	1.4 (5.4)	1.8 (6.6)	2.2 (8.2)	2.7 (10)	3.3 (12.4)	4.0 (15.2)	
	PSIG (kPa)	0.8 (5.4)	1.0 (7.2)	1.4 (9.7)	1.9 (13.4)	2.7 (18.5)	3.7 (25.9)	5.3 (36.4)	7.5 (51.5)	
TXHA011M8 Compressor: RST80C1E	BTU/H (Watts)	7280 (2130)	8280 (2430)	9370 (2750)	10560 (3090)	11870 (3480)	13310 (3900)	14890 (4360)	16640 (4880)	
	GPM (L/min)	1.3 (5)	1.6 (6.2)	2.0 (7.6)	2.5 (9.4)	3.1 (11.6)	3.8 (14.4)	4.7 (17.7)	5.8 (21.8)	
	PSIG (kPa)	1.2 (8.5)	1.7 (11.8)	2.4 (16.5)	3.4 (23.2)	4.8 (32.8)	6.8 (46.7)	9.7 (66.6)	13.9 (95.5)	
TXHA013M8 Compressor: RST97C1E	BTU/H (Watts)	8270 (2420)	9400 (2750)	10640 (3120)	11990 (3510)	13470 (3950)	15110 (4430)	16900 (4950)	18880 (5530)	
	GPM (L/min)	1.6 (6.2)	1.9 (7.4)	2.3 (8.9)	2.8 (10.7)	3.4 (13)	4.2 (15.9)	5.1 (19.4)	6.3 (23.8)	
	PSIG (kPa)	0.5 (3.3)	0.6 (4.5)	0.9 (6.1)	1.2 (8.6)	1.7 (12)	2.5 (16.9)	3.5 (24.1)	5.0 (34.4)	

CAPACITY DATA - R404A R507
MEDIUM TEMPERATURE

Capacity Rating Conditions: Entering Water = 85°F (29.4°C), Condensing = 110°F (43.3°C), Subcooling = 0°F (0°C)

MODEL TXHA	SATURATED SUCTION TEMPERATURE °F (°C)									
		-10 (-23.3)	-5 (-20.6)	0 (-17.8)	5 (-15.0)	10 (-9.4)	20 (-6.7)	25 (-3.9)	30 (-1.1)	
TXHA006M8 Compressor: RST45C1E	BTU/H (Watts)	2400 (700)	2780 (810)	3190 (930)	4130 (1210)	4640 (1360)	5190 (1520)	5780 (1690)	6400 (1880)	
	GPM (L/min)	0.6 (2.1)	0.6 (2.3)	0.7 (2.6)	0.9 (3.4)	1.0 (3.9)	1.2 (4.6)	1.4 (5.3)	1.6 (6.2)	
	PSIG (kPa)	0.3 (1.8)	0.3 (2)	0.4 (2.4)	0.5 (3.7)	0.7 (4.6)	0.9 (5.9)	1.1 (7.5)	1.4 (9.5)	
TXHA008M8 Compressor: RST55C1E	BTU/H (Watts)	2880 (840)	3370 (990)	3880 (1140)	5030 (1470)	5660 (1660)	6330 (1860)	7030 (2060)	7790 (2280)	
	GPM (L/min)	0.6 (2.3)	0.6 (2.3)	0.6 (2.4)	0.8 (2.9)	0.9 (3.3)	1.0 (3.7)	1.1 (4.3)	1.3 (5.1)	
	PSIG (kPa)	0.3 (2.4)	0.4 (2.4)	0.4 (2.6)	0.5 (3.5)	0.6 (4.3)	0.8 (5.4)	1.0 (6.8)	1.3 (8.8)	
TXHA009M8 Compressor: RST64C1E	BTU/H (Watts)	3940 (1150)	4540 (1330)	5190 (1520)	6610 (1940)	7380 (2160)	8190 (2400)	9050 (2650)	9950 (2920)	
	GPM (L/min)	0.7 (2.6)	0.7 (2.8)	0.8 (3.2)	1.1 (4.3)	1.3 (5)	1.6 (6)	1.9 (7.2)	2.3 (8.6)	
	PSIG (kPa)	0.4 (2.8)	0.5 (3.3)	0.6 (4.1)	1.0 (6.6)	1.3 (8.7)	1.7 (11.4)	2.2 (15.1)	2.9 (20)	
TXHA010M8 Compressor: RST70C1E	BTU/H (Watts)	4010 (1180)	4640 (1360)	5330 (1560)	6840 (2000)	7670 (2250)	8550 (2510)	9480 (2780)	10450 (3060)	
	GPM (L/min)	0.7 (2.5)	0.7 (2.8)	0.8 (3.2)	1.1 (4.3)	1.4 (5.2)	1.6 (6.2)	1.9 (7.3)	2.3 (8.7)	
	PSIG (kPa)	0.4 (2.8)	0.5 (3.3)	0.6 (4.1)	1.0 (6.8)	1.3 (9)	1.7 (11.9)	2.3 (15.7)	3.0 (20.6)	
TXHA011M8 Compressor: RST80C1E	BTU/H (Watts)	4780 (1400)	5490 (1610)	6270 (1840)	7980 (2340)	8920 (2610)	9920 (2910)	10970 (3210)	12080 (3540)	
	GPM (L/min)	0.8 (3)	0.9 (3.5)	1.1 (4.1)	1.6 (5.9)	1.9 (7.1)	2.3 (8.6)	2.7 (10.3)	3.2 (12.3)	
	PSIG (kPa)	0.5 (3.7)	0.7 (4.7)	0.9 (6.2)	1.6 (11)	2.2 (14.9)	2.9 (20)	3.9 (26.9)	5.2 (36.1)	
TXHA013M8 Compressor: RST97C1E	BTU/H (Watts)	5450 (1600)	6280 (1840)	7180 (2100)	9160 (2680)	10220 (3000)	11330 (3320)	12470 (3650)	13640 (4000)	
	GPM (L/min)	1.1 (4)	1.2 (4.4)	1.3 (5)	1.8 (6.7)	2.1 (7.9)	2.5 (9.4)	2.9 (11)	3.4 (12.9)	
	PSIG (kPa)	0.2 (1.4)	0.2 (1.7)	0.3 (2.1)	0.5 (3.8)	0.7 (5.1)	1.0 (6.8)	1.3 (9)	1.7 (11.8)	

CAPACITY DATA - R404A R507
LOW TEMPERATURE

Capacity Rating Conditions: Entering Water = 85°F (29.4°C), Condensing = 110°F (43.3°C), Subcooling = 0°F (0°C)

MODEL TXHA	SATURATED SUCTION TEMPERATURE °F (°C)								
		-30 (-34.4)	-20 (-28.9)	-10 (-23.3)	-5 (-20.6)	0 (-17.8)	5 (-15)	10 (-12.2)	
TXHA006L6 Compressor: RFT22C1E	BTU/H (Watts)	1310 (380)	1890 (550)	2580 (760)	2960 (870)	3380 (990)	3830 (1120)	4300 (1260)	
	GPM (L/min)	0.2 (0.9)	0.4 (1.6)	0.7 (2.7)	0.9 (3.3)	1.1 (4.1)	1.3 (5.1)	1.6 (6.1)	
	PSIG (kPa)	0.1 (0.5)	0.1 (1)	0.3 (2)	0.4 (2.8)	0.6 (3.8)	0.8 (5.2)	1.0 (7.1)	
TXHA008L6 Compressor: RFT26C1E	BTU/H (Watts)	1670 (490)	2340 (690)	3140 (920)	3600 (1060)	4100 (1200)	4610 (1350)	5180 (1520)	
	GPM (L/min)	0.5 (1.9)	0.8 (3)	1.2 (4.6)	1.5 (5.6)	1.8 (6.8)	2.2 (8.2)	2.6 (9.8)	
	PSIG (kPa)	0.2 (1.2)	0.3 (2.3)	0.7 (4.5)	0.9 (6.2)	1.2 (8.5)	1.7 (11.6)	2.3 (15.6)	

Capacity Rating Conditions: Entering Water = 85°F (29.4°C), Condensing = 110°F (43.3°C), Subcooling = 0°F (0°C)

MODEL TXZA	SATURATED SUCTION TEMPERATURE °F (°C)									
	-10 (-23.3)	0 (-17.8)	10 (-12.2)	20 (-6.7)	25 (-3.9)	30 (-1.1)	35 (1.7)	40 (4.4)		
TXZA007H8 Compressor: ZB06KAE	BTU/H (Watts)	3200 (940)	4000 (1170)	5000 (1470)	6400 (1880)	7200 (2110)	8000 (2340)	8900 (2610)	9900 (2900)	
	GPM (L/min)	0.7 (2.6)	0.8 (3)	0.9 (3.4)	1.0 (3.6)	1.1 (4.1)	1.3 (4.8)	1.5 (5.7)	1.8 (6.7)	
	PSIG (kPa)	0.4 (3)	0.6 (3.8)	0.7 (4.6)	0.7 (5.1)	0.9 (6.4)	1.2 (8.1)	1.5 (10.4)	2.0 (13.6)	
TXZA008H8 Compressor: ZB07KAE	BTU/H (Watts)	3500 (1030)	4800 (1410)	6200 (1820)	7900 (2320)	8700 (2550)	9600 (2810)	10600 (3110)	11600 (3400)	
	GPM (L/min)	0.7 (2.6)	0.9 (3.4)	1.0 (3.8)	1.4 (5.2)	1.6 (6.1)	1.9 (7.1)	2.2 (8.2)	2.5 (9.5)	
	PSIG (kPa)	0.4 (3)	0.7 (4.6)	0.8 (5.6)	1.3 (9.1)	1.7 (11.6)	2.1 (14.7)	2.7 (18.7)	3.4 (23.7)	
TXZA009H8 Compressor: ZB08KAE	BTU/H (Watts)	4300 (1260)	5800 (1700)	7500 (2200)	9200 (2700)	10100 (2960)	11100 (3250)	12100 (3550)	13100 (3840)	
	GPM (L/min)	1.0 (3.8)	1.2 (4.4)	1.4 (5.3)	1.8 (6.7)	2.0 (7.6)	2.3 (8.7)	2.6 (9.9)	3.0 (11.2)	
	PSIG (kPa)	0.2 (1.2)	0.2 (1.6)	0.4 (2.4)	0.5 (3.8)	0.7 (4.7)	0.9 (5.9)	1.1 (7.4)	1.3 (9.2)	
TXZA010H8 Compressor: ZS09KAE	BTU/H (Watts)	5300 (1550)	6700 (1960)	8300 (2430)	10300 (3020)	11400 (3340)	12700 (3720)	14100 (4130)	15600 (4570)	
	GPM (L/min)	1.1 (4.1)	1.3 (4.8)	1.6 (6)	2.1 (7.8)	2.4 (9.1)	2.8 (10.7)	3.4 (12.8)	4.1 (15.3)	
	PSIG (kPa)	0.2 (1.4)	0.3 (2)	0.4 (3)	0.7 (4.9)	0.9 (6.4)	1.2 (8.6)	1.7 (11.6)	2.3 (15.9)	
TXZA011H8 Compressor: ZS11KAE	BTU/H (Watts)	6400 (1880)	8000 (2340)	10000 (2930)	12300 (3600)	13600 (3990)	15100 (4430)	16800 (4920)	18600 (5450)	
	GPM (L/min)	1.3 (4.9)	1.6 (6.2)	2.1 (8.1)	2.9 (11.1)	3.5 (13.1)	4.1 (15.7)	5.0 (18.8)	6.0 (22.8)	
	PSIG (kPa)	0.3 (2.1)	0.5 (3.2)	0.8 (5.3)	1.3 (9.1)	1.8 (12.1)	2.4 (16.5)	3.3 (22.8)	4.6 (31.9)	
TXZA015H8 Compressor: ZS13KAE	BTU/H (Watts)	7300 (2140)	9200 (2700)	11400 (3340)	14000 (4100)	15600 (4570)	17300 (5070)	19200 (5630)	21300 (6240)	
	GPM (L/min)	1.5 (5.7)	1.7 (6.4)	2.0 (7.6)	2.4 (9)	2.9 (11.1)	3.6 (13.8)	4.6 (17.3)	5.7 (21.7)	
	PSIG (kPa)	0.6 (4.2)	0.7 (4.8)	0.8 (5.8)	1.1 (7.3)	1.4 (9.8)	2.0 (13.7)	2.9 (20)	4.3 (29.8)	
TXZA020H8 Compressor: ZS15KAE	BTU/H (Watts)	8800 (2580)	11000 (3220)	13700 (4020)	16900 (4950)	18800 (5510)	20800 (6100)	23100 (6770)	25600 (7500)	
	GPM (L/min)	1.8 (7)	2.3 (8.5)	2.9 (11)	3.9 (14.7)	4.6 (17.3)	5.4 (20.5)	6.5 (24.5)	7.8 (29.5)	
	PSIG (kPa)	0.8 (5.2)	1.0 (6.9)	1.4 (9.8)	2.2 (15.2)	2.8 (19.5)	3.7 (25.6)	4.9 (34.1)	6.7 (46.3)	
TXZA025H8 Compressor: ZS19KAE	BTU/H (Watts)	9900 (2900)	12500 (3660)	15500 (4540)	19100 (5600)	21200 (6210)	23500 (6890)	26100 (7650)	28900 (8470)	
	GPM (L/min)	1.8 (6.8)	2.0 (7.6)	2.4 (9.1)	2.8 (10.6)	3.2 (12.1)	3.6 (13.6)	3.9 (14.7)	5.0 (19)	
	PSIG (kPa)	0.2 (1.3)	0.3 (2)	0.5 (3.4)	0.7 (5)	1.0 (6.6)	1.2 (8.3)	1.4 (9.5)	2.2 (15.3)	
TXZA030H8 Compressor: ZS21KAE	BTU/H (Watts)	13100 (3840)	16400 (4810)	20400 (5980)	25200 (7390)	27900 (8180)	31000 (9090)	34400 (10080)	38200 (11200)	
	GPM (L/min)	2.2 (8.3)	2.9 (11)	3.3 (12.5)	4.2 (15.7)	5.3 (20.2)	6.8 (25.8)	8.7 (33)	11.1 (42)	
	PSIG (kPa)	0.4 (2.7)	0.8 (5.4)	1.0 (7)	1.6 (10.9)	2.5 (16.9)	3.7 (25.8)	5.6 (39)	8.5 (58.6)	
TXZA035H8 Compressor: ZS26KAE	BTU/H (Watts)	13900 (4070)	17800 (5220)	22500 (6590)	28200 (8260)	31400 (9200)	34900 (10230)	38700 (11340)	42800 (12540)	
	GPM (L/min)	2.5 (9.5)	3.3 (12.5)	4.2 (15.9)	5.9 (22.4)	7.7 (29.2)	9.8 (37.3)	12.4 (46.9)	15.4 (58.4)	
	PSIG (kPa)	0.6 (4)	0.9 (5.9)	1.2 (8.5)	2.1 (14.8)	3.3 (22.8)	5.0 (34.7)	7.5 (52)	11.2 (76.9)	
TXZA040H8 Compressor: ZS29KAE	BTU/H (Watts)	16300 (4780)	20500 (6010)	25400 (7440)	31400 (9200)	34800 (10200)	38600 (11310)	42900 (12570)	47500 (13920)	
	GPM (L/min)	3.0 (11.4)	3.7 (14)	4.2 (16)	6.1 (23)	7.4 (27.9)	9.0 (34.1)	11.1 (41.9)	13.6 (51.7)	
	PSIG (kPa)	1.1 (7.5)	1.3 (8.8)	1.4 (9.9)	2.2 (15.1)	2.9 (20.1)	4.0 (27.8)	5.8 (39.7)	8.5 (58.3)	
TXZA045H8 Compressor: ZS33KAE	BTU/H (Watts)	18500 (5420)	23300 (6830)	28900 (8470)	35600 (10430)	39500 (11580)	43900 (12870)	48700 (14270)	54000 (15830)	
	GPM (L/min)	3.3 (12.5)	4.6 (17.4)	5.8 (21.9)	8.4 (31.9)	10.3 (38.9)	12.6 (47.5)	15.4 (58.3)	18.9 (71.7)	
	PSIG (kPa)	1.2 (8)	1.6 (10.8)	2.1 (14.1)	3.6 (24.9)	5.0 (34.8)	7.2 (50)	10.6 (73.3)	15.8 (109)	
TXZA050H8 Compressor: ZB38KCE	BTU/H (Watts)	19600 (5740)	25800 (7560)	33300 (9760)	42200 (12370)	47200 (13830)	52500 (15390)	58100 (17030)	64200 (18820)	
	GPM (L/min)	3.6 (13.6)	3.9 (14.8)	5.8 (21.9)	9.0 (33.9)	11.2 (42.2)	13.9 (52.5)	17.1 (64.9)	21.1 (79.7)	
	PSIG (kPa)	2.3 (15.9)	2.4 (16.5)	2.9 (20.2)	4.0 (27.6)	4.9 (33.6)	6.1 (42.1)	7.8 (53.8)	10.1 (69.9)	
TXZA060H8 Compressor: ZB45KCE	BTU/H (Watts)	22500 (6590)	29500 (8650)	38100 (11170)	48300 (14160)	54000 (15830)	60100 (17610)	66700 (19550)	73500 (21540)	
	GPM (L/min)	4.2 (15.9)	4.9 (18.5)	5.9 (22.4)	9.5 (35.8)	12.0 (45.3)	15.1 (57.2)	18.9 (71.7)	23.5 (89)	
	PSIG (kPa)	0.3 (1.7)	0.5 (3.2)	0.8 (5.5)	2.2 (15.1)	3.4 (23.4)	5.1 (35.5)	7.6 (52.7)	11.2 (77.1)	

NOTES:

- Above ratings are based on mean temperature.
- To convert to dew point ratings, use 0.95 multiplier.

CAPACITY DATA - **R407A**

LOW TEMPERATURE

Capacity Rating Conditions: Entering Water = 85°F (29.4°C), Condensing = 110°F (43.3°C), Subcooling = 0°F (0°C)

MODEL TXZA		SATURATED SUCTION TEMPERATURE °F (°C)											
		-40 (-40)	-35 (-37.2)	-30 (-34.4)	-25 (-31.7)	-20 (-28.9)	-15 (-26.1)	-10 (-23.3)	-5 (-20.6)				
TXZA008L8 Compressor: ZF03KAE	BTU/H (Watts)	1800 (530)	2000 (590)	2300 (670)	2500 (730)	2900 (850)	3200 (940)	3600 (1060)	4100 (1200)				
	GPM (L/min)	1.0 (3.6)	1.0 (3.6)	1.0 (3.6)	1.0 (3.7)	1.0 (3.9)	1.1 (4.2)	1.2 (4.7)	1.4 (5.5)				
	PSIG (kPa)	0.6 (4.1)	0.6 (4.1)	0.6 (4.1)	0.6 (4.3)	0.7 (4.6)	0.8 (5.2)	0.9 (6.2)	1.1 (7.8)				
TXZA010L8 Compressor: ZF04KAE	BTU/H (Watts)	2200 (640)	2500 (730)	2900 (850)	3300 (970)	3800 (1110)	4400 (1290)	5000 (1470)	5800 (1700)				
	GPM (L/min)	1.0 (3.7)	1.0 (3.9)	1.1 (4.2)	1.3 (4.8)	1.5 (5.7)	1.8 (6.9)	2.3 (8.6)	2.9 (10.9)				
	PSIG (kPa)	0.6 (4.3)	0.7 (4.6)	0.8 (5.2)	0.9 (6.3)	1.2 (8.2)	1.6 (11.3)	2.3 (16.2)	3.5 (23.9)				
TXZA015L8 Compressor: ZF05KAE	BTU/H (Watts)	2600 (760)	3000 (880)	3400 (1000)	3900 (1140)	4600 (1350)	5200 (1520)	6000 (1760)	6800 (1990)				
	GPM (L/min)	0.7 (2.5)	0.7 (2.7)	0.8 (3)	0.9 (3.5)	1.1 (4.1)	1.3 (4.9)	1.6 (6)	1.9 (7.3)				
	PSIG (kPa)	0.4 (2.7)	0.5 (3.1)	0.5 (3.8)	0.7 (4.8)	0.9 (6.2)	1.2 (8.3)	1.6 (11.3)	2.2 (15.5)				
TXZA020L8 Compressor: ZF07KAE	BTU/H (Watts)	4300 (1260)	5000 (1470)	5700 (1670)	6500 (1900)	7400 (2170)	8300 (2430)	9400 (2750)	10600 (3110)				
	GPM (L/min)	1.6 (5.9)	1.8 (6.6)	2.0 (7.6)	2.3 (8.8)	2.7 (10.3)	3.2 (12.1)	3.8 (14.3)	4.5 (17.1)				
	PSIG (kPa)	0.4 (2.9)	0.5 (3.7)	0.7 (4.7)	0.9 (6)	1.1 (7.9)	1.5 (10.5)	2.1 (14.2)	2.8 (19.3)				
TXZA025L8 Compressor: ZF08K4E	BTU/H (Watts)	4900 (1440)	5600 (1640)	6500 (1900)	7500 (2200)	8500 (2490)	9700 (2840)	10900 (3190)	12200 (3580)				
	GPM (L/min)	1.5 (5.8)	1.5 (5.8)	1.6 (6.1)	1.8 (6.7)	2.0 (7.7)	2.5 (9.4)	3.1 (11.8)	4.0 (15)				
	PSIG (kPa)	0.6 (4.4)	0.6 (4.3)	0.7 (4.5)	0.7 (5)	0.9 (6)	1.1 (7.7)	1.6 (10.7)	2.3 (15.7)				
TXZA030L8 Compressor: ZF09K4E	BTU/H (Watts)	5500 (1610)	6300 (1850)	7200 (2110)	8400 (2460)	9600 (2810)	10900 (3190)	12200 (3580)	13600 (3990)				
	GPM (L/min)	1.5 (5.8)	1.6 (6.1)	1.8 (6.7)	2.1 (7.8)	2.5 (9.5)	3.1 (11.9)	3.9 (14.8)	4.8 (18.4)				
	PSIG (kPa)	0.6 (4.4)	0.7 (4.6)	0.7 (5)	0.9 (6)	1.1 (7.8)	1.6 (10.8)	2.2 (15.5)	3.2 (22.2)				
TXZA035L8 Compressor: ZF11K4E	BTU/H (Watts)	6800 (1990)	7800 (2290)	9000 (2640)	10400 (3050)	11900 (3490)	13600 (3990)	15300 (4480)	17000 (4980)				
	GPM (L/min)	2.4 (9)	2.7 (10.3)	3.2 (12)	3.8 (14.3)	4.5 (17.2)	5.4 (20.6)	6.4 (24.4)	7.5 (28.5)				
	PSIG (kPa)	1.1 (7.4)	1.3 (9)	1.6 (11.3)	2.1 (14.7)	2.8 (19.4)	3.7 (25.7)	4.9 (33.8)	6.3 (43.7)				
TXZA045L8 Compressor: ZF13K4E	BTU/H (Watts)	7800 (2290)	8800 (2580)	10100 (2960)	11600 (3400)	13400 (3930)	15300 (4480)	17500 (5130)	19700 (5770)				
	GPM (L/min)	3.0 (11.4)	3.4 (13.1)	4.0 (15.3)	4.8 (18.3)	5.8 (22.1)	7.1 (26.8)	8.6 (32.4)	10.3 (39)				
	PSIG (kPa)	1.5 (10.5)	1.8 (12.8)	2.4 (16.2)	3.1 (21.4)	4.2 (28.9)	5.7 (39.5)	7.9 (54.4)	10.8 (74.6)				
TXZA055L8 Compressor: ZF15K4E	BTU/H (Watts)	9900 (2900)	11100 (3250)	12600 (3690)	14500 (4250)	16500 (4840)	18900 (5540)	21500 (6300)	24200 (7090)				
	GPM (L/min)	2.6 (9.8)	2.8 (10.6)	3.0 (11.4)	3.4 (12.8)	4.5 (16.9)	5.9 (22.2)	7.6 (28.7)	9.7 (36.7)				
	PSIG (kPa)	0.6 (4.2)	0.7 (5)	0.8 (5.8)	1.1 (7.3)	1.8 (12.4)	2.9 (19.9)	4.5 (30.9)	6.8 (46.7)				
TXZA060L8 Compressor: ZF18K4E	BTU/H (Watts)	12000 (3520)	13500 (3960)	15300 (4480)	17500 (5130)	20100 (5890)	22800 (6680)	25900 (7590)	---				
	GPM (L/min)	2.8 (10.7)	3.5 (13.4)	4.6 (17.3)	6.0 (22.6)	7.8 (29.6)	10.1 (38.3)	12.9 (48.9)	---				
	PSIG (kPa)	0.7 (5)	1.2 (8.1)	1.9 (12.9)	3.0 (20.6)	4.7 (32.4)	7.3 (50.1)	11.0 (76.1)	---				

NOTES:

- Above ratings are based on mean temperature.
- To convert to dew point ratings, use 0.95 multiplier.

Capacity Rating Conditions: Entering Water = 85°F (29.4°C), Condensing = 110°F (43.3°C), Subcooling = 0°F (0°C)

MODEL TXZA		SATURATED SUCTION TEMPERATURE °F (°C)									
		-10 (-23.3)	0 (-17.8)	10 (-12.2)	20 (-6.7)	25 (-3.9)	30 (-1.1)	35 (1.7)	40 (4.4)		
TXZA007H8 Compressor: ZB06KAE	BTU/H (Watts)	3200 (940)	4100 (1200)	5300 (1550)	6600 (1930)	7400 (2170)	8200 (2400)	9000 (2640)	9900 (2900)		
	GPM (L/min)	0.7 (2.6)	0.8 (3)	0.9 (3.4)	1.0 (3.8)	1.1 (4.3)	1.3 (5)	1.5 (5.8)	1.8 (6.9)		
	PSIG (kPa)	0.4 (3)	0.6 (3.8)	0.7 (4.6)	0.8 (5.4)	1.0 (6.8)	1.2 (8.5)	1.6 (10.9)	2.0 (14.1)		
TXZA008H8 Compressor: ZB07KAE	BTU/H (Watts)	3900 (1140)	5000 (1470)	6300 (1850)	7900 (2320)	8800 (2580)	9800 (2870)	10800 (3170)	11900 (3490)		
	GPM (L/min)	0.8 (3)	0.9 (3.4)	1.0 (3.9)	1.4 (5.3)	1.6 (6.2)	1.9 (7.3)	2.3 (8.7)	2.7 (10.4)		
	PSIG (kPa)	0.6 (3.8)	0.7 (4.6)	0.8 (5.8)	1.3 (9.3)	1.7 (12)	2.3 (15.6)	3.0 (20.6)	4.0 (27.3)		
TXZA009H8 Compressor: ZB08KAE	BTU/H (Watts)	4600 (1350)	5800 (1700)	7400 (2170)	9300 (2730)	10400 (3050)	11500 (3370)	12700 (3720)	14100 (4130)		
	GPM (L/min)	1.0 (3.9)	1.2 (4.4)	1.4 (5.3)	1.8 (6.8)	2.1 (7.9)	2.4 (9.2)	2.9 (10.8)	3.4 (12.7)		
	PSIG (kPa)	0.2 (1.2)	0.2 (1.6)	0.4 (2.4)	0.6 (3.9)	0.7 (5.1)	1.0 (6.6)	1.3 (8.7)	1.7 (11.5)		
TXZA010H8 Compressor: ZS09KAE	BTU/H (Watts)	5100 (1490)	6300 (1850)	7900 (2320)	9900 (2900)	11000 (3220)	12300 (3600)	13800 (4040)	15400 (4510)		
	GPM (L/min)	1.1 (4.1)	1.2 (4.7)	1.5 (5.8)	2.0 (7.6)	2.4 (8.9)	2.8 (10.6)	3.4 (12.7)	4.1 (15.5)		
	PSIG (kPa)	0.2 (1.4)	0.3 (1.9)	0.4 (2.9)	0.7 (4.7)	0.9 (6.2)	1.2 (8.4)	1.7 (11.5)	2.3 (16.1)		
TXZA011H8 Compressor: ZS11KAE	BTU/H (Watts)	6100 (1790)	7600 (2230)	9500 (2780)	11800 (3460)	13300 (3900)	14800 (4340)	16500 (4840)	18400 (5390)		
	GPM (L/min)	1.3 (4.8)	1.6 (5.9)	2.0 (7.7)	2.8 (10.6)	3.3 (12.6)	4.0 (15.2)	4.9 (18.5)	6.0 (22.6)		
	PSIG (kPa)	0.3 (1.9)	0.4 (3)	0.7 (4.8)	1.2 (8.4)	1.7 (11.4)	2.3 (15.7)	3.2 (22.1)	4.6 (31.5)		
TXZA015H8 Compressor: ZS13KAE	BTU/H (Watts)	7000 (2050)	8700 (2550)	10700 (3140)	13300 (3900)	14900 (4370)	16600 (4860)	18700 (5480)	21000 (6150)		
	GPM (L/min)	1.5 (5.7)	1.7 (6.4)	2.0 (7.6)	2.2 (8.3)	2.7 (10.3)	3.4 (13)	4.4 (16.6)	5.6 (21.3)		
	PSIG (kPa)	0.6 (4.2)	0.7 (4.8)	0.8 (5.8)	0.9 (6.5)	1.3 (8.8)	1.8 (12.4)	2.7 (18.6)	4.2 (28.9)		
TXZA020H8 Compressor: ZS15KAE	BTU/H (Watts)	8400 (2460)	10400 (3050)	13000 (3810)	16300 (4780)	18200 (5330)	20400 (5980)	22700 (6650)	25400 (7440)		
	GPM (L/min)	1.8 (6.8)	2.2 (8.2)	2.8 (10.5)	3.7 (14.1)	4.4 (16.7)	5.3 (20)	6.4 (24.2)	7.8 (29.4)		
	PSIG (kPa)	0.7 (5)	0.9 (6.5)	1.3 (9.3)	2.1 (14.4)	2.7 (18.6)	3.6 (24.6)	4.8 (33.3)	6.7 (46.1)		
TXZA025H8 Compressor: ZS19KAE	BTU/H (Watts)	9400 (2750)	11800 (3460)	14600 (4280)	18100 (5300)	20200 (5920)	22600 (6620)	25400 (7440)	28500 (8350)		
	GPM (L/min)	1.8 (6.8)	2.0 (7.6)	2.4 (9.1)	2.8 (10.6)	3.2 (12.1)	3.6 (13.6)	3.7 (13.9)	4.9 (18.7)		
	PSIG (kPa)	0.2 (1.3)	0.3 (2)	0.5 (3.4)	0.7 (5)	1.0 (6.6)	1.2 (8.3)	1.2 (8.6)	2.1 (14.8)		
TXZA030H8 Compressor: ZS21KAE	BTU/H (Watts)	12500 (3660)	16500 (4840)	21100 (6180)	26400 (7740)	29300 (8590)	32400 (9500)	35800 (10490)	39400 (11550)		
	GPM (L/min)	2.5 (9.5)	3.3 (12.5)	4.2 (15.9)	4.8 (18.2)	6.2 (23.4)	7.8 (29.7)	9.9 (37.4)	12.3 (46.6)		
	PSIG (kPa)	0.6 (3.8)	1.0 (7)	1.6 (11.1)	2.0 (14.1)	3.2 (21.7)	4.7 (32.6)	7.0 (48.2)	10.2 (70.2)		
TXZA035H8 Compressor: ZS26KAE	BTU/H (Watts)	13700 (4020)	17400 (5100)	22300 (6540)	28300 (8290)	31700 (9290)	35400 (10370)	39400 (11550)	43700 (12810)		
	GPM (L/min)	2.5 (9.5)	3.3 (12.5)	4.2 (15.9)	6.0 (22.6)	7.9 (30)	10.3 (38.8)	13.0 (49.3)	16.3 (61.7)		
	PSIG (kPa)	0.6 (4)	0.9 (5.9)	1.2 (8.5)	2.2 (15)	3.5 (23.9)	5.4 (37.2)	8.2 (56.8)	12.3 (85)		
TXZA040H8 Compressor: ZS29KAE	BTU/H (Watts)	15900 (4660)	21000 (6150)	26800 (7850)	33500 (9820)	37200 (10900)	41200 (12070)	45400 (13310)	50000 (14650)		
	GPM (L/min)	3.0 (11.4)	3.7 (14)	4.6 (17.4)	6.9 (26)	8.4 (31.8)	10.3 (38.9)	12.5 (47.5)	15.2 (57.7)		
	PSIG (kPa)	1.1 (7.5)	1.3 (8.8)	1.6 (10.7)	2.6 (18)	3.6 (24.7)	5.1 (34.8)	7.2 (49.8)	10.4 (71.8)		
TXZA045H8 Compressor: ZS33KAE	BTU/H (Watts)	17500 (5130)	23100 (6770)	29600 (8670)	36900 (10810)	41000 (12020)	45400 (13310)	50100 (14680)	55200 (16180)		
	GPM (L/min)	3.3 (12.5)	4.6 (17.4)	5.8 (22)	8.8 (33.3)	10.8 (40.8)	13.2 (49.9)	16.1 (60.8)	19.5 (73.7)		
	PSIG (kPa)	1.2 (8)	1.6 (10.8)	2.1 (14.2)	3.9 (26.6)	5.5 (37.9)	7.9 (54.7)	11.5 (79.4)	16.7 (115.3)		
TXZA050H8 Compressor: ZB38KCE	BTU/H (Watts)	19200 (5630)	25800 (7560)	33200 (9730)	41600 (12190)	46400 (13600)	51500 (15090)	57200 (16760)	63300 (18550)		
	GPM (L/min)	3.6 (13.6)	4.2 (15.9)	5.9 (22.3)	8.9 (33.6)	11.0 (41.5)	13.6 (51.4)	16.8 (63.5)	20.7 (78.5)		
	PSIG (kPa)	2.3 (15.9)	2.5 (17)	2.9 (20.3)	4.0 (27.4)	4.8 (33.1)	6.0 (41.1)	7.6 (52.4)	9.9 (68.5)		
TXZA060H8 Compressor: ZB45KCE	BTU/H (Watts)	22800 (6680)	30700 (9000)	39400 (11550)	49400 (14480)	55100 (16150)	61200 (17940)	67900 (19900)	75200 (22040)		
	GPM (L/min)	4.2 (15.9)	4.9 (18.5)	6.4 (24.2)	10.0 (38)	12.6 (47.8)	15.9 (60.1)	19.9 (75.4)	24.9 (94.3)		
	PSIG (kPa)	0.3 (1.7)	0.5 (3.2)	1.0 (6.7)	2.5 (16.9)	3.7 (25.8)	5.6 (38.7)	8.4 (57.6)	12.4 (85.4)		

NOTES:

- Above ratings are based on mean temperature.
- To convert to dew point ratings, use 0.95 multiplier.

CAPACITY DATA - R448A R449A
LOW TEMPERATURE

Capacity Rating Conditions: Entering Water = 85°F (29.4°C), Condensing = 110°F (43.3°C), Subcooling = 0°F (0°C)

MODEL TXZA		SATURATED SUCTION TEMPERATURE °F (°C)											
		-40 (-40)	-35 (-37.2)	-30 (-34.4)	-25 (-31.7)	-20 (-28.9)	-15 (-26.1)	-10 (-23.3)	-5 (-20.6)				
TXZA008L8 Compressor: ZF03KAE	BTU/H (Watts)	1900 (560)	2100 (620)	2400 (700)	2700 (790)	3000 (880)	3400 (1000)	3800 (1110)	4300 (1260)				
	GPM (L/min)	1.0 (3.6)	1.0 (3.6)	1.0 (3.7)	1.0 (3.8)	1.1 (4.1)	1.2 (4.5)	1.3 (5)	1.6 (5.9)				
	PSIG (kPa)	0.6 (4.1)	0.6 (4.1)	0.6 (4.2)	0.6 (4.4)	0.7 (4.9)	0.8 (5.6)	1.0 (6.8)	1.3 (8.7)				
TXZA010L8 Compressor: ZF04KAE	BTU/H (Watts)	2400 (700)	2700 (790)	3100 (910)	3500 (1030)	4100 (1200)	4600 (1350)	5300 (1550)	6000 (1760)				
	GPM (L/min)	1.0 (3.9)	1.1 (4.1)	1.2 (4.5)	1.4 (5.2)	1.6 (6.2)	2.0 (7.5)	2.5 (9.4)	3.1 (11.8)				
	PSIG (kPa)	0.7 (4.5)	0.7 (5)	0.8 (5.8)	1.0 (7.1)	1.4 (9.4)	1.9 (13)	2.7 (18.6)	4.0 (27.3)				
TXZA015L8 Compressor: ZF05KAE	BTU/H (Watts)	2800 (820)	3200 (940)	3700 (1080)	4200 (1230)	4800 (1410)	5500 (1610)	6300 (1850)	7100 (2080)				
	GPM (L/min)	0.7 (2.6)	0.8 (2.9)	0.9 (3.2)	1.0 (3.7)	1.2 (4.4)	1.4 (5.3)	1.7 (6.4)	2.1 (7.8)				
	PSIG (kPa)	0.4 (2.9)	0.5 (3.4)	0.6 (4.2)	0.8 (5.4)	1.0 (7)	1.3 (9.3)	1.8 (12.6)	2.5 (17.3)				
TXZA020L8 Compressor: ZF07KAE	BTU/H (Watts)	4500 (1320)	5100 (1490)	5900 (1730)	6600 (1930)	7500 (2200)	8500 (2490)	9600 (2810)	10800 (3170)				
	GPM (L/min)	1.6 (6.2)	1.8 (6.9)	2.1 (7.9)	2.4 (9)	2.8 (10.5)	3.3 (12.4)	3.9 (14.8)	4.7 (17.8)				
	PSIG (kPa)	0.5 (3.3)	0.6 (4)	0.7 (5)	0.9 (6.4)	1.2 (8.3)	1.6 (11)	2.2 (15)	3.0 (20.7)				
TXZA025L8 Compressor: ZF08K4E	BTU/H (Watts)	5200 (1520)	6000 (1760)	6900 (2020)	7900 (2320)	9000 (2640)	10100 (2960)	11400 (3340)	12800 (3750)				
	GPM (L/min)	1.5 (5.8)	1.5 (5.8)	1.6 (6.1)	1.8 (6.8)	2.1 (8)	2.6 (9.8)	3.3 (12.4)	4.2 (16)				
	PSIG (kPa)	0.6 (4.3)	0.6 (4.4)	0.7 (4.6)	0.7 (5.2)	0.9 (6.2)	1.2 (8.2)	1.7 (11.6)	2.6 (17.6)				
TXZA030L8 Compressor: ZF09K4E	BTU/H (Watts)	5900 (1730)	6800 (1990)	7700 (2260)	8800 (2580)	10000 (2930)	11200 (3280)	12700 (3720)	14200 (4160)				
	GPM (L/min)	1.6 (5.9)	1.7 (6.3)	1.9 (7.1)	2.2 (8.2)	2.6 (10)	3.3 (12.5)	4.2 (15.8)	5.4 (20.4)				
	PSIG (kPa)	0.6 (4.4)	0.7 (4.7)	0.8 (5.4)	0.9 (6.5)	1.2 (8.4)	1.7 (11.7)	2.5 (17.3)	3.9 (26.7)				
TXZA035L8 Compressor: ZF11K4E	BTU/H (Watts)	7300 (2140)	8400 (2460)	9600 (2810)	10900 (3190)	12400 (3630)	14000 (4100)	15800 (4630)	17700 (5190)				
	GPM (L/min)	2.5 (9.3)	2.8 (10.7)	3.3 (12.5)	3.9 (14.7)	4.6 (17.4)	5.5 (20.7)	6.6 (24.8)	7.9 (29.8)				
	PSIG (kPa)	1.1 (7.8)	1.4 (9.6)	1.7 (12)	2.2 (15.3)	2.9 (19.8)	3.8 (26)	5.1 (34.8)	6.8 (47.2)				
TXZA045L8 Compressor: ZF13K4E	BTU/H (Watts)	8400 (2460)	9600 (2810)	11000 (3220)	12600 (3690)	14400 (4220)	16400 (4810)	18500 (5420)	20900 (6130)				
	GPM (L/min)	4.2 (16)	4.7 (17.7)	5.3 (20.1)	6.1 (23.1)	7.1 (27)	8.4 (31.8)	9.9 (37.6)	11.8 (44.8)				
	PSIG (kPa)	2.5 (17.3)	3.0 (20.4)	3.6 (24.8)	4.5 (31.1)	5.8 (40)	7.6 (52.5)	10.2 (70.1)	13.8 (95)				
TXZA055L8 Compressor: ZF15K4E	BTU/H (Watts)	10600 (3110)	12100 (3550)	13800 (4040)	15700 (4600)	17800 (5220)	20200 (5920)	22800 (6680)	25700 (7530)				
	GPM (L/min)	2.6 (9.8)	3.1 (11.9)	3.8 (14.5)	4.8 (18)	5.9 (22.4)	7.4 (28.1)	9.3 (35.2)	11.6 (44)				
	PSIG (kPa)	0.6 (4.2)	0.9 (6.3)	1.4 (9.4)	2.0 (13.9)	2.9 (20.3)	4.3 (29.7)	6.3 (43.5)	9.2 (63.6)				
TXZA060L8 Compressor: ZF18K4E	BTU/H (Watts)	12900 (3780)	14700 (4310)	16800 (4920)	19100 (5600)	21600 (6330)	24400 (7150)	27500 (8060)	---	---			
	GPM (L/min)	4.8 (18)	5.6 (21.3)	6.7 (25.5)	8.2 (31)	10.1 (38.1)	12.4 (46.9)	15.3 (58.1)	---	---			
	PSIG (kPa)	2.0 (13.9)	2.7 (18.5)	3.7 (25.3)	5.1 (35.2)	7.2 (49.7)	10.3 (71)	14.8 (102.3)	---	---			

NOTES:

- Above ratings are based on mean temperature.
- To convert to dew point ratings, use 0.95 multiplier.

CAPACITY DATA - **R407C** HIGH / MEDIUM TEMPERATURE

Capacity Rating Conditions: Entering Water = 85°F (29.4°C), Condensing = 110°F (43.3°C), Subcooling = 0°F (0°C)

MODEL TXZA	SATURATED SUCTION TEMPERATURE °F (°C)								
	10 (-12.2)	15 (-9.4)	20 (-6.7)	25 (-3.9)	30 (-1.1)	35 (1.7)	40 (4.4)		
TXZA007H8 Compressor: ZB06KAE	BTU/H (Watts)	4790 (1400)	5410 (1590)	6080 (1780)	6800 (1990)	7580 (2220)	8420 (2470)	9340 (2740)	
	GPM (L/min)	0.8 (3)	0.9 (3.4)	0.9 (3.2)	1.0 (3.8)	1.2 (4.6)	1.5 (5.6)	1.8 (6.8)	
	PSIG (kPa)	0.6 (3.8)	0.7 (4.6)	0.6 (4.3)	0.8 (5.6)	1.1 (7.5)	1.5 (10.2)	2.0 (13.9)	
TXZA008H8 Compressor: ZB07KAE	BTU/H (Watts)	5760 (1690)	6490 (1900)	7280 (2130)	8140 (2390)	9050 (2650)	10000 (2930)	11100 (3250)	
	GPM (L/min)	0.9 (3.5)	1.1 (4.1)	1.3 (4.8)	1.5 (5.7)	1.8 (6.8)	2.2 (8.2)	2.7 (10.1)	
	PSIG (kPa)	0.7 (4.8)	0.9 (6.2)	1.2 (8)	1.5 (10.5)	2.0 (13.9)	2.7 (18.9)	3.8 (26.1)	
TXZA009H8 Compressor: ZB08KAE	BTU/H (Watts)	6770 (1980)	7580 (2220)	8480 (2490)	9450 (2770)	10520 (3080)	11700 (3430)	13000 (3810)	
	GPM (L/min)	1.2 (4.7)	1.4 (5.3)	1.6 (6.2)	1.9 (7.3)	2.3 (8.7)	2.7 (10.4)	3.3 (12.6)	
	PSIG (kPa)	0.3 (1.9)	0.4 (2.5)	0.5 (3.2)	0.6 (4.3)	0.9 (5.9)	1.2 (8.1)	1.6 (11.2)	
TXZA010H8 Compressor: ZS09KAE	BTU/H (Watts)	7940 (2330)	8950 (2620)	10010 (2930)	11120 (3260)	12310 (3610)	13600 (3990)	14900 (4370)	
	GPM (L/min)	1.6 (6)	1.9 (7.1)	2.2 (8.5)	2.7 (10.1)	3.2 (12)	3.8 (14.3)	4.5 (16.9)	
	PSIG (kPa)	0.4 (3.1)	0.6 (4.2)	0.8 (5.7)	1.1 (7.8)	1.5 (10.5)	2.0 (14.1)	2.7 (18.8)	
TXZA011H8 Compressor: ZS11KAE	BTU/H (Watts)	9480 (2780)	10680 (3130)	11950 (3500)	13280 (3890)	14690 (4310)	16200 (4750)	17800 (5220)	
	GPM (L/min)	2.3 (8.5)	2.7 (10.3)	3.3 (12.5)	4.0 (15.1)	4.8 (18.1)	5.7 (21.5)	6.7 (25.5)	
	PSIG (kPa)	0.8 (5.7)	1.2 (8)	1.6 (11.2)	2.2 (15.5)	3.1 (21.2)	4.2 (28.8)	5.6 (39)	
TXZA015H8 Compressor: ZS13KAE	BTU/H (Watts)	10830 (3170)	12200 (3580)	13640 (4000)	15170 (4450)	16780 (4920)	18500 (5420)	20300 (5950)	
	GPM (L/min)	1.8 (6.8)	2.0 (7.6)	2.5 (9.7)	3.2 (12.2)	4.0 (15.3)	5.0 (19)	6.2 (23.3)	
	PSIG (kPa)	0.7 (5.1)	0.9 (5.9)	1.2 (8)	1.6 (11.3)	2.4 (16.2)	3.4 (23.5)	4.9 (33.8)	
TXZA020H8 Compressor: ZS15KAE	BTU/H (Watts)	13050 (3820)	14710 (4310)	16450 (4820)	18280 (5360)	20230 (5930)	22300 (6540)	24500 (7180)	
	GPM (L/min)	3.2 (12.1)	3.8 (14.3)	4.5 (17.1)	5.4 (20.3)	6.3 (24)	7.5 (28.3)	8.8 (33.2)	
	PSIG (kPa)	1.6 (11.3)	2.1 (14.7)	2.8 (19.2)	3.6 (25.1)	4.8 (33)	6.3 (43.2)	8.2 (56.5)	
TXZA025H8 Compressor: ZS19KAE	BTU/H (Watts)	14720 (4310)	16590 (4860)	18560 (5440)	20630 (6050)	22820 (6690)	25200 (7390)	27600 (8090)	
	GPM (L/min)	2.2 (8.3)	2.4 (9.1)	2.6 (9.8)	3.0 (11.4)	3.2 (12.1)	4.1 (15.6)	5.2 (19.7)	
	PSIG (kPa)	0.4 (2.7)	0.5 (3.4)	0.6 (4.2)	0.8 (5.8)	1.0 (6.6)	1.6 (10.7)	2.4 (16.3)	
TXZA030H8 Compressor: ZS21KAE	BTU/H (Watts)	19770 (5790)	22290 (6530)	24920 (7300)	27710 (8120)	30650 (8980)	33800 (9910)	37100 (10870)	
	GPM (L/min)	3.0 (11.4)	3.6 (13.6)	4.7 (17.8)	6.1 (23.3)	7.9 (29.9)	10.0 (37.7)	12.4 (47)	
	PSIG (kPa)	0.8 (5.8)	1.2 (8.3)	2.0 (13.6)	3.1 (21.6)	4.8 (33)	7.1 (48.9)	10.3 (71)	
TXZA035H8 Compressor: ZS26KAE	BTU/H (Watts)	21940 (6430)	24720 (7240)	27650 (8100)	30740 (9010)	34010 (9970)	37500 (10990)	41200 (12070)	
	GPM (L/min)	3.2 (12.1)	4.6 (17.5)	6.5 (24.6)	8.6 (32.5)	10.9 (41.4)	13.5 (51.3)	16.5 (62.3)	
	PSIG (kPa)	0.8 (5.7)	1.4 (10)	2.5 (17.1)	4.0 (27.4)	6.0 (41.6)	8.8 (60.8)	12.6 (86.6)	
TXZA040H8 Compressor: ZS29KAE	BTU/H (Watts)	24590 (7210)	27710 (8120)	30990 (9080)	34450 (10100)	38120 (11170)	42000 (12310)	46100 (13510)	
	GPM (L/min)	3.9 (14.8)	4.9 (18.7)	6.2 (23.6)	7.8 (29.5)	9.7 (36.5)	11.8 (44.8)	14.4 (54.5)	
	PSIG (kPa)	1.3 (9.2)	1.7 (11.7)	2.3 (15.7)	3.2 (21.9)	4.5 (31.2)	6.5 (44.9)	9.3 (64.5)	
TXZA045H8 Compressor: ZS33KAE	BTU/H (Watts)	27250 (7990)	30720 (9000)	34350 (10070)	38190 (11190)	42250 (12380)	46600 (13660)	51100 (14980)	
	GPM (L/min)	5.2 (19.8)	6.7 (25.2)	8.4 (31.8)	10.5 (39.6)	12.9 (48.9)	15.8 (59.8)	19.1 (72.3)	
	PSIG (kPa)	1.8 (12.4)	2.5 (17.2)	3.6 (24.6)	5.2 (35.9)	7.6 (52.6)	11.1 (76.8)	16.1 (111)	
TXZA050H8 Compressor: ZB38KCE	BTU/H (Watts)	31430 (9210)	35230 (10320)	39340 (11530)	43810 (12840)	48680 (14270)	54000 (15830)	59700 (17500)	
	GPM (L/min)	5.4 (20.6)	6.9 (26.1)	8.8 (33.2)	11.1 (42.2)	14.1 (53.5)	17.8 (67.5)	22.4 (84.7)	
	PSIG (kPa)	2.8 (19.4)	3.3 (22.6)	3.9 (27.1)	4.9 (33.6)	6.2 (42.9)	8.2 (56.4)	11.0 (75.9)	
TXZA060H8 Compressor: ZB45KCE	BTU/H (Watts)	36990 (10840)	41830 (12260)	47110 (13810)	52830 (15480)	58960 (17280)	65500 (19200)	72500 (21250)	
	GPM (L/min)	5.7 (21.4)	7.5 (28.3)	10.0 (37.7)	13.2 (49.9)	17.3 (65.4)	22.4 (84.7)	28.6 (108.1)	
	PSIG (kPa)	0.7 (4.9)	1.4 (9.5)	2.4 (16.7)	4.0 (27.8)	6.5 (44.9)	10.2 (70.6)	15.8 (108.6)	

NOTE: The capacities shown above are rated at dew point. The dew point is a saturation point and is the condition (pressure and temperature) at which a gas begins to condense. Since R407C has significant glide, the saturated gas and saturated liquid temperatures are not the same. It is important that all components of a system are selected correctly

CAPACITY DATA - R404A R507
HIGH / MEDIUM TEMPERATURE

Capacity Rating Conditions: Entering Water = 85°F (29.4°C), Condensing = 110°F (43.3°C), Subcooling = 0°F (0°C)

MODEL TXZA	SATURATED SUCTION TEMPERATURE °F (°C)										
		-10 (-23.3)	0 (-17.8)	10 (-12.2)	20 (-6.7)	25 (-3.9)	30 (-1.1)	35 (1.7)	40 (4.4)		
TXZA007H8 Compressor: ZB06KAE	BTU/H (Watts)	3400 (1000)	4300 (1260)	5400 (1580)	6800 (1990)	7500 (2200)	8400 (2460)	9300 (2730)	10200 (2990)		
	GPM (L/min)	0.7 (2.6)	0.8 (3)	0.9 (3.4)	1.0 (3.7)	1.1 (4.3)	1.3 (5)	1.6 (5.9)	1.9 (7)		
	PSIG (kPa)	0.4 (3)	0.6 (3.8)	0.7 (4.6)	0.8 (5.4)	1.0 (6.7)	1.2 (8.6)	1.6 (11.1)	2.1 (14.6)		
TXZA008H8 Compressor: ZB07KAE	BTU/H (Watts)	3900 (1140)	5100 (1490)	6500 (1900)	8200 (2400)	9200 (2700)	10200 (2990)	11400 (3340)	12700 (3720)		
	GPM (L/min)	0.8 (3)	0.9 (3.4)	1.0 (3.9)	1.4 (5.3)	1.7 (6.3)	2.0 (7.5)	2.4 (9.2)	3.0 (11.2)		
	PSIG (kPa)	0.6 (3.8)	0.7 (4.6)	0.8 (5.7)	1.3 (9.3)	1.8 (12.2)	2.4 (16.3)	3.2 (22.3)	4.5 (30.9)		
TXZA009H8 Compressor: ZB08KAE	BTU/H (Watts)	4700 (1380)	6100 (1790)	7600 (2230)	9400 (2750)	10500 (3080)	11700 (3430)	13000 (3810)	14600 (4280)		
	GPM (L/min)	1.0 (3.8)	1.1 (4.2)	1.3 (4.9)	1.6 (6.1)	1.8 (7)	2.2 (8.2)	2.6 (9.9)	3.2 (12.1)		
	PSIG (kPa)	0.2 (1.2)	0.2 (1.5)	0.3 (2)	0.5 (3.1)	0.6 (4.1)	0.8 (5.4)	1.1 (7.4)	1.5 (10.6)		
TXZA010H8 Compressor: ZS09KAE	BTU/H (Watts)	5300 (1550)	6900 (2020)	8700 (2550)	10700 (3140)	11800 (3460)	13000 (3810)	14300 (4190)	16100 (4720)		
	GPM (L/min)	1.0 (4)	1.2 (4.6)	1.5 (5.8)	2.0 (7.6)	2.3 (8.8)	2.7 (10.2)	3.2 (12)	3.9 (14.9)		
	PSIG (kPa)	0.2 (1.3)	0.3 (1.8)	0.4 (2.8)	0.7 (4.6)	0.9 (6)	1.1 (7.9)	1.5 (10.4)	2.2 (15.1)		
TXZA011H8 Compressor: ZS11KAE	BTU/H (Watts)	6700 (1960)	8400 (2460)	10500 (3080)	13000 (3810)	14400 (4220)	15900 (4660)	17600 (5160)	19500 (5710)		
	GPM (L/min)	1.2 (4.7)	1.6 (5.9)	2.1 (8)	2.9 (11.1)	3.5 (13.2)	4.2 (15.8)	5.0 (19)	6.0 (22.8)		
	PSIG (kPa)	0.3 (1.9)	0.4 (3)	0.7 (5.1)	1.3 (9.1)	1.8 (12.3)	2.4 (16.8)	3.4 (23.2)	4.6 (32)		
TXZA015H8 Compressor: ZS13KAE	BTU/H (Watts)	7600 (2230)	9600 (2810)	11900 (3490)	14800 (4340)	16400 (4810)	18200 (5330)	20100 (5890)	22200 (6510)		
	GPM (L/min)	1.4 (5.3)	1.5 (5.5)	1.8 (6.8)	2.6 (9.8)	3.2 (12)	3.9 (14.9)	4.9 (18.6)	6.1 (23.2)		
	PSIG (kPa)	0.6 (3.9)	0.6 (4.1)	0.7 (5.2)	1.2 (8.1)	1.6 (11.1)	2.3 (15.6)	3.3 (22.8)	4.9 (33.6)		
TXZA020H8 Compressor: ZS15KAE	BTU/H (Watts)	9200 (2700)	11500 (3370)	14400 (4220)	17700 (5190)	19800 (5800)	21900 (6420)	24200 (7090)	26700 (7820)		
	GPM (L/min)	1.8 (6.9)	1.9 (7.2)	2.3 (8.8)	3.2 (12.3)	4.0 (15.2)	5.0 (18.8)	6.2 (23.4)	7.7 (29.2)		
	PSIG (kPa)	0.7 (5.1)	0.8 (5.4)	1.0 (7.2)	1.7 (11.6)	2.3 (16)	3.2 (22.4)	4.6 (31.7)	6.6 (45.6)		
TXZA025H8 Compressor: ZS19KAE	BTU/H (Watts)	10300 (3020)	12900 (3780)	16200 (4750)	19900 (5830)	22100 (6480)	24500 (7180)	27100 (7940)	30000 (8790)		
	GPM (L/min)	2.0 (7.7)	2.2 (8.3)	2.5 (9.5)	2.8 (10.6)	3.0 (11.4)	3.2 (12.2)	4.1 (15.5)	5.3 (19.9)		
	PSIG (kPa)	0.3 (2.1)	0.4 (2.7)	0.6 (3.8)	0.7 (5)	0.8 (5.8)	1.0 (6.7)	1.5 (10.6)	2.4 (16.6)		
TXZA030H8 Compressor: ZS21KAE	BTU/H (Watts)	13800 (4040)	17300 (5070)	21600 (6330)	26600 (7800)	29400 (8620)	32900 (9640)	36400 (10670)	40200 (11780)		
	GPM (L/min)	2.8 (10.6)	3.5 (13.2)	3.1 (11.6)	4.9 (18.6)	6.2 (23.6)	8.3 (31.3)	10.6 (40.1)	13.5 (51)		
	PSIG (kPa)	0.7 (5)	1.1 (7.9)	0.9 (6)	2.1 (14.6)	3.2 (22.2)	5.2 (35.6)	7.9 (54.2)	11.9 (81.8)		
TXZA035H8 Compressor: ZS26KAE	BTU/H (Watts)	15400 (4510)	19300 (5660)	24200 (7090)	29700 (8700)	33100 (9700)	36700 (10760)	40500 (11870)	44800 (13130)		
	GPM (L/min)	2.6 (9.8)	3.0 (11.4)	4.2 (15.7)	6.8 (25.6)	8.4 (31.9)	10.3 (38.8)	12.2 (46.3)	14.6 (55.1)		
	PSIG (kPa)	0.6 (4.2)	0.7 (5.2)	1.2 (8.4)	2.7 (18.4)	3.9 (26.6)	5.4 (37.2)	7.4 (50.8)	10.1 (69.3)		
TXZA040H8 Compressor: ZS29KAE	BTU/H (Watts)	17500 (5130)	21900 (6420)	27500 (8060)	33800 (9910)	37300 (10930)	41700 (12220)	46100 (13510)	50900 (14920)		
	GPM (L/min)	3.4 (13)	4.5 (16.9)	6.1 (23)	8.3 (31.6)	9.8 (37)	11.8 (44.6)	14.0 (52.9)	16.6 (62.7)		
	PSIG (kPa)	1.2 (8.2)	1.5 (10.4)	2.2 (15.2)	3.5 (24.4)	4.6 (31.9)	6.4 (44.4)	8.8 (60.9)	12.2 (84.3)		
TXZA045H8 Compressor: ZS33KAE	BTU/H (Watts)	18600 (5450)	24200 (7090)	30300 (8880)	37200 (10900)	41400 (12130)	45900 (13450)	50800 (14890)	56100 (16440)		
	GPM (L/min)	3.9 (14.7)	5.4 (20.4)	7.5 (28.3)	10.3 (39.1)	12.3 (46.6)	14.6 (55.3)	17.4 (65.8)	20.6 (78.1)		
	PSIG (kPa)	1.3 (9.2)	1.9 (12.9)	3.0 (20.5)	5.1 (35.2)	7.0 (48.1)	9.6 (66.3)	13.4 (92.3)	18.7 (128.9)		
TXZA050H8 Compressor: ZB38KCE	BTU/H (Watts)	22300 (6540)	28100 (8240)	34900 (10230)	42900 (12570)	47300 (13860)	52100 (15270)	57200 (16760)	62600 (18350)		
	GPM (L/min)	4.0 (15.2)	5.1 (19.4)	6.9 (26)	9.6 (36.2)	11.4 (43)	13.5 (51.3)	16.1 (61.1)	19.2 (72.8)		
	PSIG (kPa)	2.4 (16.7)	2.7 (18.8)	3.3 (22.5)	4.2 (29.2)	5.0 (34.2)	5.9 (41)	7.3 (50)	9.0 (62.1)		
TXZA060H8 Compressor: ZB45KCE	BTU/H (Watts)	26500 (7770)	33400 (9790)	41500 (12160)	50900 (14920)	56200 (16470)	61800 (18110)	67900 (19900)	74400 (21800)		
	GPM (L/min)	5.1 (19.4)	6.5 (24.5)	8.5 (32.2)	11.6 (43.8)	13.6 (51.4)	16.0 (60.4)	18.8 (71.2)	22.2 (83.9)		
	PSIG (kPa)	0.5 (3.7)	1.0 (6.8)	1.8 (12.3)	3.2 (22)	4.2 (29.3)	5.7 (39)	7.5 (52)	10.1 (69.4)		

LOW TEMPERATURE

Capacity Rating Conditions: Entering Water = 85°F (29.4°C), Condensing = 110°F (43.3°C), Subcooling = 0°F (0°C)

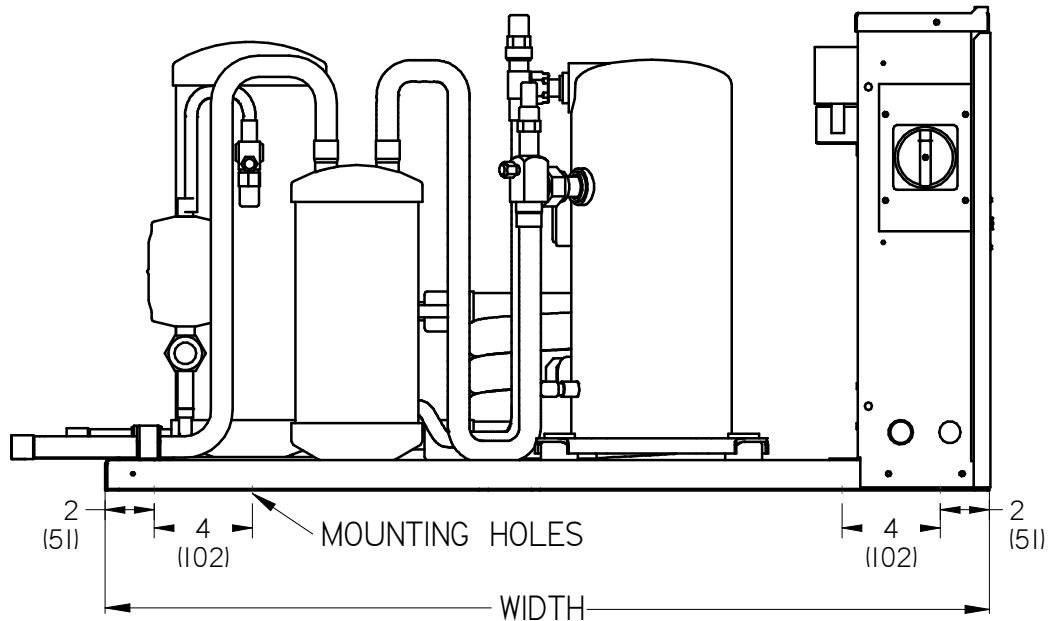
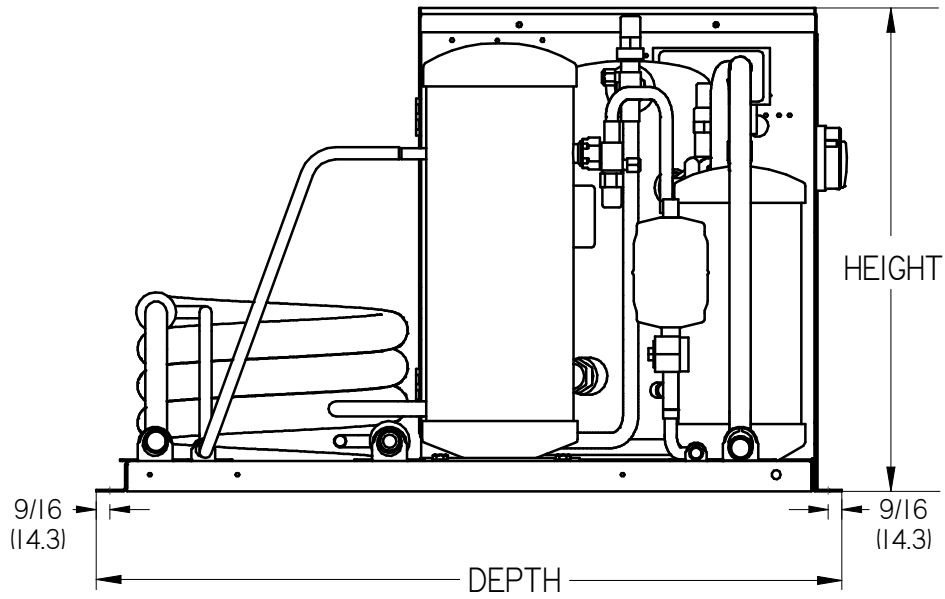
MODEL TXZA		SATURATED SUCTION TEMPERATURE °F (°C)											
		-40 (-40)	-30 (-34.4)	-25 (-31.7)	-20 (-28.9)	-15 (-26.1)	-10 (-23.3)	-5 (-20.6)	0 (-17.8)				
TXZA008L8 Compressor: ZF03KAE	BTU/H (Watts)	2000 (590)	2400 (700)	2700 (790)	3100 (910)	3500 (1030)	3900 (1140)	4400 (1290)	5000 (1470)				
	GPM (L/min)	0.6 (2.2)	0.7 (2.5)	0.7 (2.8)	0.8 (3)	0.9 (3.4)	1.0 (3.8)	1.2 (4.4)	1.3 (5.1)				
	PSIG (kPa)	0.3 (1.9)	0.3 (2.4)	0.4 (2.7)	0.5 (3.1)	0.5 (3.7)	0.7 (4.5)	0.8 (5.5)	1.0 (6.9)				
TXZA010L8 Compressor: ZF04KAE	BTU/H (Watts)	2500 (730)	3200 (940)	3600 (1060)	4100 (1200)	4700 (1380)	5400 (1580)	6100 (1790)	6900 (2020)				
	GPM (L/min)	0.8 (2.9)	0.9 (3.6)	1.1 (4.1)	1.2 (4.7)	1.4 (5.4)	1.7 (6.4)	2.0 (7.5)	2.3 (8.8)				
	PSIG (kPa)	0.4 (2.9)	0.6 (4)	0.7 (4.9)	0.9 (6.1)	1.1 (7.7)	1.4 (9.8)	1.9 (12.8)	2.4 (16.7)				
TXZA015L8 Compressor: ZF05KAE	BTU/H (Watts)	3000 (880)	3900 (1140)	4500 (1320)	5100 (1490)	5800 (1700)	6500 (1900)	7400 (2170)	8200 (2400)				
	GPM (L/min)	0.8 (2.9)	0.9 (3.3)	0.9 (3.4)	1.0 (3.6)	1.1 (4.2)	1.3 (4.9)	1.5 (5.8)	1.8 (6.9)				
	PSIG (kPa)	0.5 (3.5)	0.6 (4.4)	0.8 (5.5)	0.7 (5.1)	0.9 (6.4)	1.2 (8.3)	1.6 (10.8)	2.1 (14.3)				
TXZA020L8 Compressor: ZF07KAE	BTU/H (Watts)	4600 (1350)	6200 (1820)	7100 (2080)	8100 (2370)	9100 (2670)	10200 (2990)	11500 (3370)	12900 (3780)				
	GPM (L/min)	1.1 (4.3)	1.4 (5.4)	1.6 (6.2)	1.9 (7.2)	2.2 (8.5)	2.7 (10.1)	3.2 (12.2)	3.9 (14.8)				
	PSIG (kPa)	0.2 (1.6)	0.4 (2.5)	0.5 (3.2)	0.6 (4.3)	0.8 (5.7)	1.1 (7.8)	1.5 (10.7)	2.2 (14.9)				
TXZA025L8 Compressor: ZF08K4E	BTU/H (Watts)	5700 (1670)	7400 (2170)	8300 (2430)	9300 (2730)	10500 (3080)	11700 (3430)	13100 (3840)	14500 (4250)				
	GPM (L/min)	1.4 (5.3)	1.4 (5.4)	1.6 (6.1)	1.7 (6.2)	1.9 (7.1)	2.2 (8.4)	2.7 (10.2)	3.3 (12.5)				
	PSIG (kPa)	0.6 (4)	0.6 (4)	0.7 (4.5)	0.7 (4.7)	0.8 (5.4)	1.0 (6.6)	1.2 (8.6)	1.7 (11.8)				
TXZA030L8 Compressor: ZF09K4E	BTU/H (Watts)	6300 (1850)	8200 (2400)	9300 (2730)	10400 (3050)	11600 (3400)	13000 (3810)	14500 (4250)	16100 (4720)				
	GPM (L/min)	1.5 (5.7)	1.6 (6.1)	1.7 (6.4)	1.8 (6.9)	2.1 (8.1)	2.6 (9.8)	3.2 (12)	4.0 (15)				
	PSIG (kPa)	0.6 (4.2)	0.7 (4.5)	0.7 (4.8)	0.8 (5.3)	0.9 (6.4)	1.2 (8.2)	1.6 (11.1)	2.3 (15.7)				
TXZA035L8 Compressor: ZF11K4E	BTU/H (Watts)	7900 (2320)	10200 (2990)	11500 (3370)	12900 (3780)	14500 (4250)	16200 (4750)	18100 (5300)	20100 (5890)				
	GPM (L/min)	1.8 (6.8)	2.0 (7.5)	2.2 (8.3)	2.5 (9.5)	3.0 (11.3)	3.6 (13.8)	4.5 (17.1)	5.7 (21.5)				
	PSIG (kPa)	0.7 (5)	0.8 (5.7)	1.0 (6.6)	1.2 (8)	1.5 (10.3)	2.0 (13.8)	2.8 (19.3)	4.0 (27.6)				
TXZA045L8 Compressor: ZF13K4E	BTU/H (Watts)	8800 (2580)	11500 (3370)	13000 (3810)	14700 (4310)	16600 (4860)	18600 (5450)	20800 (6100)	23100 (6770)				
	GPM (L/min)	1.9 (7.3)	2.4 (9.1)	2.8 (10.7)	3.4 (12.9)	4.2 (15.9)	5.3 (20)	6.7 (25.2)	8.4 (31.8)				
	PSIG (kPa)	0.8 (5.5)	1.1 (7.5)	1.4 (9.5)	1.8 (12.5)	2.5 (17.3)	3.6 (24.5)	5.2 (35.7)	7.7 (52.7)				
TXZA055L8 Compressor: ZF15K4E	BTU/H (Watts)	11100 (3250)	14400 (4220)	16200 (4750)	18200 (5330)	20400 (5980)	22900 (6710)	25500 (7470)	28400 (8320)				
	GPM (L/min)	2.2 (8.3)	2.7 (10.2)	2.9 (11)	3.2 (12.1)	3.7 (14)	4.8 (18)	6.2 (23.4)	8.0 (30.4)				
	PSIG (kPa)	0.4 (2.7)	0.7 (4.6)	0.8 (5.4)	1.0 (6.6)	1.3 (8.7)	2.0 (13.9)	3.2 (21.8)	4.9 (33.9)				
TXZA060L8 Compressor: ZF18K4E	BTU/H (Watts)	13400 (3930)	17400 (5100)	19700 (5770)	22100 (6480)	24700 (7240)	27500 (8060)	30600 (8970)	34000 (9960)				
	GPM (L/min)	2.8 (10.6)	3.3 (12.5)	4.0 (15)	5.1 (19.3)	6.6 (24.9)	8.5 (32.2)	11.0 (41.6)	14.1 (53.5)				
	PSIG (kPa)	0.7 (5)	1.0 (7)	1.4 (10)	2.3 (15.6)	3.5 (24.3)	5.4 (37.5)	8.4 (57.8)	12.9 (89)				

MODEL TXHA	COMPRESSOR MODEL NO.	POWER SUPPLY	COMPRESSOR		UNIT		
			RLA	LRA	MCA	MOP	
TXHA006M8- IS2	RST45C1E-CAV	208-230/1/60	4.6	26.5	5.8	15	
TXHA008M8- IS2	RST55C1E-CAV	208-230/1/60	6.1	33.7	7.6	15	
TXHA009M8- IS2	RST64C1E-CAV	208-230/1/60	8.1	43.0	10.1	15	
TXHA010M8-	IS2	RST70C1E-PFV	208-230/1/60	6.9	46.0	8.6	15
	IT3	RST70C1E-TA5	208-230/3/60	4.9	36.0	6.1	15
TXHA011M8-	IS2	RST80C1E-PFV	208-230/1/60	8.3	46.0	10.4	15
	IT3	RST80C1E-TA5	208-230/3/60	5.1	36.0	6.4	15
TXHA013M8-	IS2	RST97C1E-PFV	208-230/1/60	9.0	51.0	11.3	20
	IT3	RST97C1E-TA5	208-230/3/60	5.4	36.0	6.8	15
TXHA006L6- IS2	RFT22C1E-CAV	208-230/1/60	4.7	29.0	5.9	15	
TXHA008L6- IS2	RFT26C1E-CAV	208-230/1/60	5.8	35.5	7.3	15	

Above listed RLA value is based on UL rating method and may differ from published compressor RLA data.

MODEL TXZA	COMPRESSOR MODEL NO.	POWER SUPPLY	COMPRESSOR		UNIT		
			RLA	LRA	MCA	MOP	
TXZA007H8-	IS2	ZB06KAE-PFV	208-230/1/60	6.0	36.0	7.5	15
	IT3	ZB06KAE-TF5	208-230/3/60	4.8	37.8	6.0	15
TXZA008H8-	IS2	ZB07KAE-PFV	208-230/1/60	6.3	48.0	7.9	15
	IT3	ZB07KAE-TF5	208-230/3/60	5.2	37.8	6.5	15
TXZA009H8-	IS2	ZB08KAE-PFV	208-230/1/60	8.0	47.2	10.0	15
	IT3	ZB08KAE-TF5	208-230/3/60	5.3	37.8	6.6	15
TXZA010H8-	IS2	ZS09KAE-PFV	208-230/1/60	10.0	40.3	12.5	20
	IT3	ZS09KAE-TF5	208-230/3/60	8.0	55.4	10.0	15
	IT4	ZS09KAE-TFD	460/3/60	3.8	28	4.8	15
TXZA011H8-	IS2	ZS11KAE-PFV	208-230/1/60	12.6	55	15.8	25
	IT3	ZS11KAE-TF5	208-230/3/60	10.4	58	13.0	20
	IT4	ZS11KAE-TFD	460/3/60	4.3	28	5.4	15
TXZA015H8-	IS2	ZS13KAE-PFV	208-230/1/60	12.0	56	15.0	25
	IT3	ZS13KAE-TF5	208-230/3/60	9.7	58	12.1	20
	IT4	ZS13KAE-TFD	460/3/60	4.8	29	6.0	15
	IT5	ZS13KAE-TFE	575/3/60	3.6	24.5	4.5	15
TXZA020H8-	IS2	ZS15KAE-PFV	208-230/1/60	15.7	68	19.6	35
	IT3	ZS15KAE-TF5	208-230/3/60	10.6	58	13.3	20
	IT4	ZS15KAE-TFD	460/3/60	5.4	29	6.8	15
	IT5	ZS15KAE-TFE	575/3/60	3.9	24	4.9	15
TXZA025H8-	IS2	ZS19KAE-PFV	208-230/1/60	18.0	75	22.5	40
	IT3	ZS19KAE-TF5	208-230/3/60	13.7	73	17.1	30
	IT4	ZS19KAE-TFD	460/3/60	6.5	38	8.1	15
	IT5	ZS19KAE-TFE	575/3/60	4.3	28	5.4	15
TXZA030H8-	IS2	ZS21KAE-PFV	208-230/1/60	23.2	112	29.0	45
	IT3	ZS21KAE-TF5	208-230/3/60	15.2	93	19.0	30
	IT4	ZS21KAE-TFD	460/3/60	6.9	48	8.6	15
	IT5	ZS21KAE-TFE	575/3/60	5.8	33	7.3	15
TXZA035H8-	IS2	ZS26KAE-PFV	208-230/1/60	23.6	104	29.5	50
	IT3	ZS26KAE-TF5	208-230/3/60	15.5	93	19.4	30
	IT4	ZS26KAE-TFD	460/3/60	6.9	48	8.6	15
	IT5	ZS26KAE-TFE	575/3/60	6.4	38	8.0	15
TXZA040H8-	IS2	ZS29KAE-PFV	208-230/1/60	26.1	137	32.6	50
	IT3	ZS29KAE-TF5	208-230/3/60	20.5	114	25.6	45
	IT4	ZS29KAE-TFD	460/3/60	9.4	58	11.8	20
	IT5	ZS29KAE-TFE	575/3/60	5.8	43	7.3	15
TXZA045H8-	IS2	ZS33KAE-PFV	208-230/1/60	25.6	146	32.0	50
	IT3	ZS33KAE-TF5	208-230/3/60	22.3	114	27.9	50
	IT4	ZS33KAE-TFD	460/3/60	10.0	52	12.5	20
	IT5	ZS33KAE-TFE	575/3/60	6.9	39.5	8.6	15
TXZA050H8-	IS2	ZB38KCE-PFV	208-230/1/60	31.1	175	38.9	70
	IT3	ZB38KCE-TF5	208-230/3/60	22.1	128	27.6	45
	IT4	ZB38KCE-TFD	460/3/60	9.6	63	12.0	20
	IT5	ZB38KCE-TFE	575/3/60	7.1	50	8.9	15
TXZA060H8-	IT3	ZB45KCE-TF5	208-230/3/60	22.5	156	28.1	50
	IT4	ZB45KCE-TFD	460/3/60	11.5	75	14.4	25
	IT5	ZB45KCE-TFE	575/3/60	7.9	54	9.9	15

MODEL TXZA		COMPRESSOR MODEL NO.	POWER SUPPLY	COMPRESSOR		UNIT	
				RLA	LRA	MCA	MOP
TXZA008L8-	IS2	ZF03KAE-PFV	208-230/1/60	6.1	43	7.6	15
	IT3	ZF03KAE-TF5	208-230/3/60	4.1	32	5.1	15
TXZA010L8-	IS2	ZF04KAE-PFV	208-230/1/60	7.4	40	9.3	15
	IT3	ZF04KAE-TF5	208-230/3/60	6.6	55	8.3	15
TXZA015L8-	IS2	ZF05KAE-PFV	208-230/1/60	8.7	55	10.9	15
	IT3	ZF05KAE-TF5	208-230/3/60	7.4	58	9.3	15
TXZA020L8-	IS2	ZF07KAE-PFV	208-230/1/60	13.9	75	17.4	30
	IT3	ZF07KAE-TF5	208-230/3/60	8.6	58	10.8	15
TXZA025L8-	IS2	ZF08K4E-PFV	208-230/1/60	16.4	73	20.5	35
	IT3	ZF08K4E-TF5	208-230/3/60	9.6	63	12.0	20
	IT4	ZF08K4E-TFD	460/3/60	5.0	31	6.3	15
TXZA030L8-	IS2	ZF09K4E-PFV	208-230/1/60	16.4	88	20.5	35
	IT3	ZF09K4E-TF5	208-230/3/60	11.1	77	13.9	20
	IT4	ZF09K4E-TFD	460/3/60	5.0	39	6.3	15
	IT5	ZF09K4E-TFE	575/3/60	4.3	31	5.4	15
TXZA035L8-	IS2	ZF11K4E-PFV	208-230/1/60	20.8	109	26.0	45
	IT3	ZF11K4E-TF5	208-230/3/60	14.2	88	17.8	25
	IT4	ZF11K4E-TFD	460/3/60	7.1	44	8.9	15
	IT5	ZF11K4E-TFE	575/3/60	5.0	34	6.3	15
TXZA045L8-	IS2	ZF13K4E-PFV	208-230/1/60	26.8	129	33.5	50
	IT3	ZF13K4E-TF5	208-230/3/60	15.0	99	18.8	30
	IT4	ZF13K4E-TFD	460/3/60	8.2	49.5	10.3	15
	IT5	ZF13K4E-TFE	575/3/60	8.2	40	10.3	15
TXZA055L8-	IS2	ZF15K4E-PFV	208-230/1/60	31.8	169	39.8	60
	IT3	ZF15K4E-TF5	208-230/3/60	21.4	123	26.8	40
	IT4	ZF15K4E-TFD	460/3/60	9.6	62	12.0	20
	IT5	ZF15K4E-TFE	575/3/60	7.9	50	9.9	15
TXZA060L8-	IT3	ZF18K4E-TF5	208-230/3/60	23.9	156	29.9	50
	IT4	ZF18K4E-TFD	460/3/60	9.3	75	11.6	20
	IT5	ZF18K4E-TFE	575/3/60	7.9	54	9.9	15



**REFER TO NEXT PAGE FOR
DIMENSIONAL DATA FOR SPECIFIC MODELS**

TXH**DIMENSIONAL DATA****60Hz**

MODEL TXHA	WIDTH		DEPTH		HEIGHT	
	Inches	mm	Inches	mm	Inches	mm
TXHA006M8	24 7/8	632	30 3/8	772	19	483
TXHA008M8	24 7/8	632	30 3/8	772	19	483
TXHA009M8	24 7/8	632	30 3/8	772	19	483
TXHA010M8	24 7/8	632	30 3/8	772	19	483
TXHA011M8	24 7/8	632	30 3/8	772	19	483
TXHA013M8	36 3/8	924	30 3/8	772	19 1/2	495
TXHA006L6	24 7/8	632	30 3/8	772	19	483
TXHA008L6	24 7/8	632	30 3/8	772	19	483

TXZ**DIMENSIONAL DATA****60Hz**

MODEL TXZA	WIDTH		DEPTH		HEIGHT	
	Inches	mm	Inches	mm	Inches	mm
TXZA007H8	24 7/8	632	30 3/8	772	19	483
TXZA008H8	24 7/8	632	30 3/8	772	19	483
TXZA009H8	24 7/8	632	30 3/8	772	19	483
TXZA010H8	36 3/8	924	30 3/8	772	19 1/2	495
TXZA011H8	36 3/8	924	30 3/8	772	19 1/2	495
TXZA015H8	36 3/8	924	30 3/8	772	19 1/2	495
TXZA020H8	36 3/8	924	30 3/8	772	19 1/2	495
TXZA025H8	36 3/8	924	30 3/8	772	19 1/2	495
TXZA030H8	43 7/8	1114	32 7/8	835	30	762
TXZA035H8	43 7/8	1114	32 7/8	835	30	762
TXZA040H8	43 7/8	1114	32 7/8	835	30	762
TXZA045H8	43 7/8	1114	32 7/8	835	30	762
TXZA050H8	43 7/8	1114	32 7/8	835	30	762
TXZA060H8	43 7/8	1114	32 7/8	835	30	762
TXZA008L8	24 7/8	632	30 3/8	772	19	483
TXZA010L8	24 7/8	632	30 3/8	772	19	483
TXZA015L8	24 7/8	632	30 3/8	772	19	483
TXZA020L8	36 3/8	924	30 3/8	772	19 1/2	495
TXZA025L8	36 3/8	924	30 3/8	772	19 1/2	495
TXZA030L8	36 3/8	924	30 3/8	772	19 1/2	495
TXZA035L8	36 3/8	924	30 3/8	772	19 1/2	495
TXZA045L8	43 7/8	1114	32 7/8	835	30	762
TXZA055L8	43 7/8	1114	32 7/8	835	30	762
TXZA060L8	43 7/8	1114	32 7/8	835	30	762

TXH**SPECIFICATIONS****60Hz**

MODEL TXHA	FIELD CONNECTIONS				WATER CONNECTION		RECEIVER CAPACITY 90% FULL *		SHIPPING WEIGHT	
	SUCTION		LIQUID		In.	mm	Lbs.	Kgs	Lbs.	Kgs
	In.	mm	In.	mm						
TXHA006M8	5/8	16	3/8	10	1/2	13	5.4	2.4	120	54
TXHA008M8	5/8	16	3/8	10	1/2	13	5.4	2.4	120	54
TXHA009M8	5/8	16	3/8	10	1/2	13	5.4	2.4	120	54
TXHA010M8	5/8	16	3/8	10	1/2	13	5.4	2.4	140	64
TXHA011M8	5/8	16	3/8	10	1/2	13	5.4	2.4	140	64
TXHA013M8	5/8	16	3/8	10	5/8	16	11.3	5.1	240	109
TXHA006L6	1/2	13	3/8	10	1/2	13	5.4	2.4	110	50
TXHA008L6	5/8	16	3/8	10	1/2	13	5.4	2.4	160	73

TXZ**SPECIFICATIONS****60Hz**

MODEL TXZA	FIELD CONNECTIONS				WATER CONNECTION		RECEIVER CAPACITY 90% FULL *		SHIPPING WEIGHT	
	SUCTION		LIQUID		In.	mm	Lbs.	Kgs	Lbs.	Kgs
	Inches	mm	Inches	mm						
TXZA007H8	5/8	16	3/8	10	1/2	13	5.4	2.4	115	52
TXZA008H8	5/8	16	3/8	10	1/2	13	5.4	2.4	115	52
TXZA009H8	5/8	16	3/8	10	1/2	13	5.4	2.4	115	52
TXZA010H8	5/8	16	3/8	10	5/8	16	5.4	2.4	115	52
TXZA011H8	5/8	16	3/8	10	5/8	16	5.4	2.4	125	57
TXZA015H8	7/8	22	3/8	10	5/8	16	11.0	5.0	150	68
TXZA020H8	7/8	22	3/8	10	3/4	19	11.0	5.0	250	113
TXZA025H8	7/8	22	1/2	13	7/8	22	14.0	6.4	250	113
TXZA030H8	7/8	22	1/2	13	7/8	22	22.0	10.0	265	120
TXZA035H8	7/8	22	1/2	13	7/8	22	22.0	10.0	330	150
TXZA040H8	1 1/8	29	1/2	13	7/8	22	22.0	10.0	330	150
TXZA045H8	1 1/8	29	1/2	13	7/8	22	22.0	10.0	340	154
TXZA050H8	1 1/8	29	1/2	13	7/8	22	22.0	10.0	340	154
TXZA060H8	1 1/8	29	1/2	13	1 1/8	29	22.0	10.0	350	159
TXZA008L8	5/8	16	3/8	10	1/2	13	5.4	2.4	115	52
TXZA010L8	5/8	16	3/8	10	1/2	13	5.4	2.4	115	52
TXZA015L8	5/8	16	3/8	10	1/2	13	5.4	2.4	115	52
TXZA020L8	7/8	22	3/8	10	5/8	16	11.0	5.0	200	91
TXZA025L8	7/8	22	3/8	10	5/8	16	14.0	6.4	220	100
TXZA030L8	7/8	22	3/8	10	5/8	16	14.0	6.4	230	104
TXZA035L8	7/8	22	1/2	13	3/4	19	22.0	10.0	240	109
TXZA045L8	1 1/8	29	1/2	13	3/4	19	22.0	10.0	290	132
TXZA055L8	1 1/8	29	1/2	13	7/8	22	22.0	10.0	290	132
TXZA060L8	1 1/8	29	1/2	13	7/8	22	22.0	10.0	300	136

*** NOTE ON ALTERNATE REFRIGERANTS:**

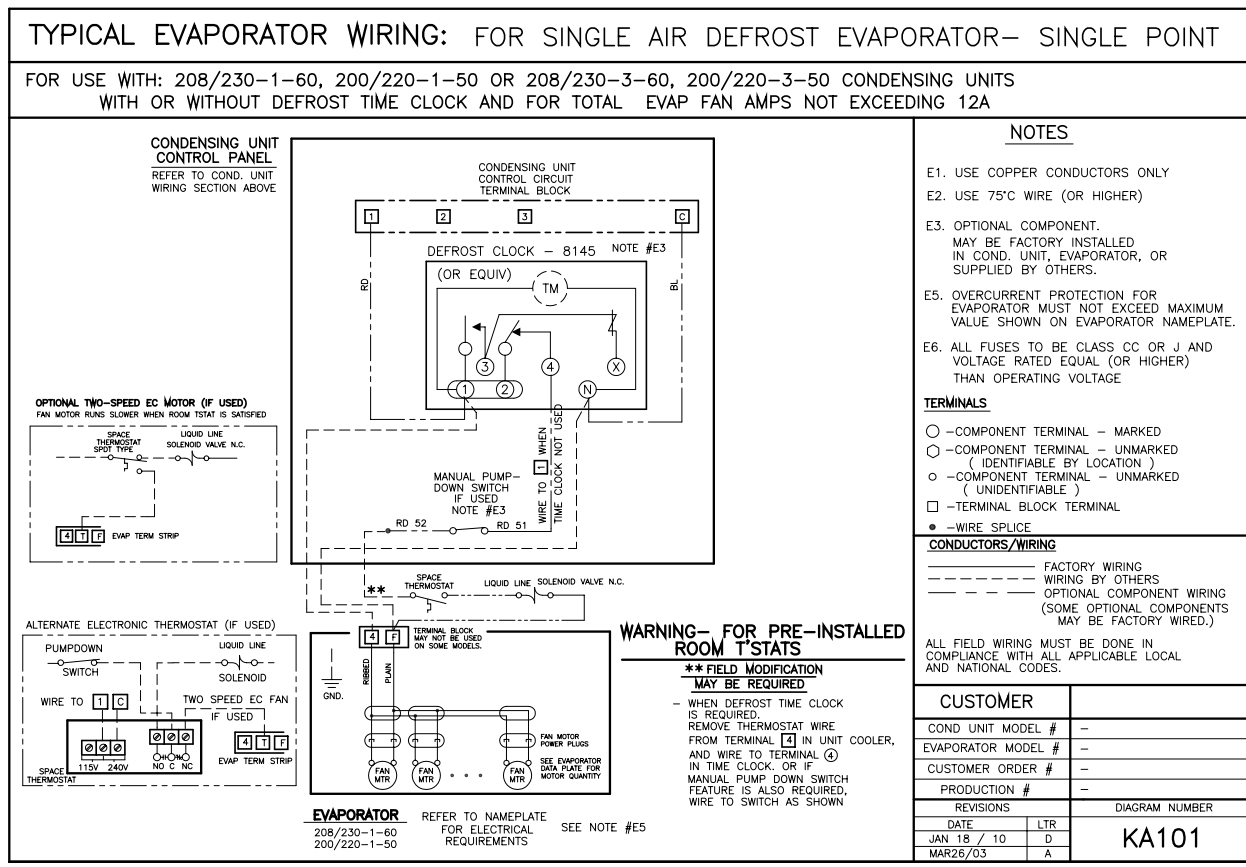
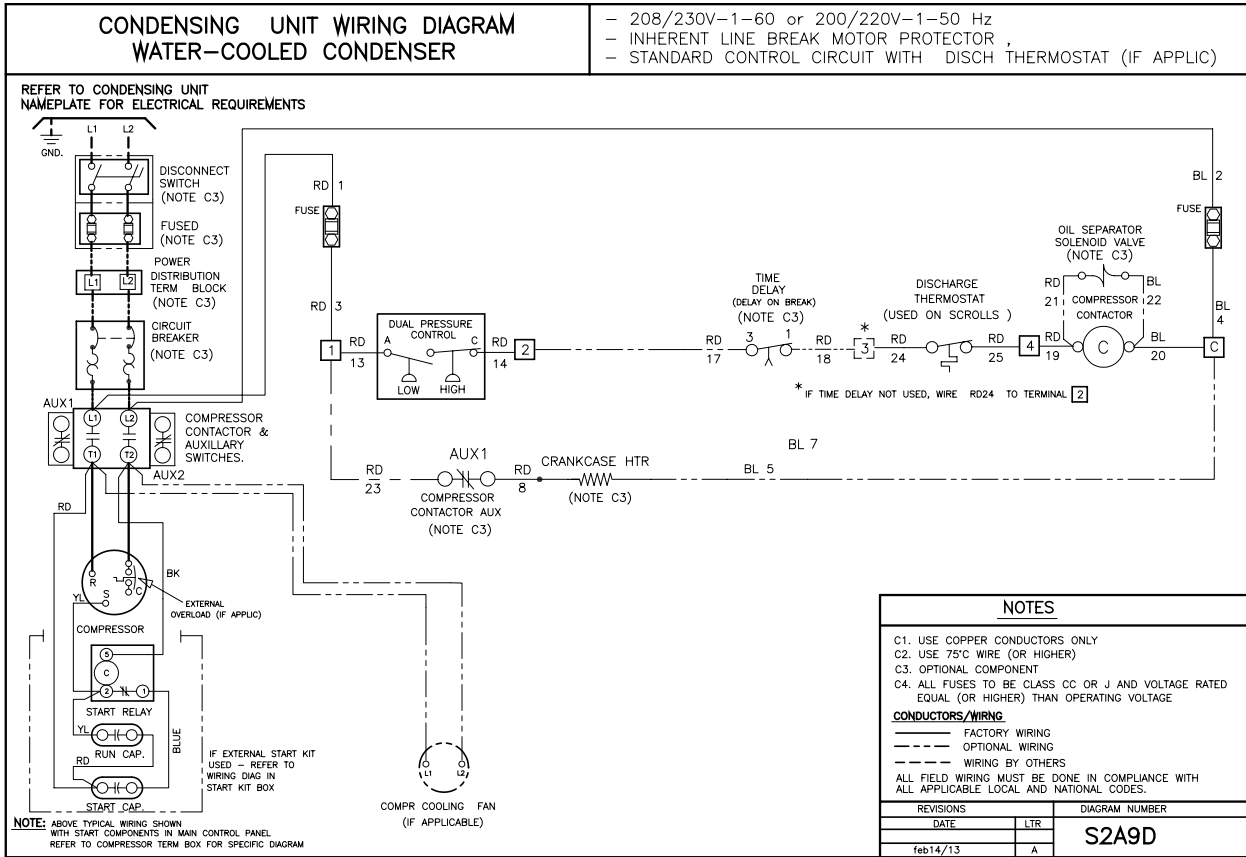
* PUBLISHED RECEIVER CAPACITY IS BASED ON **R404A** ON MODELS USING "8" AS REFRIGERANT CODE.
FOR ALTERNATE REFRIGERANTS, MULTIPLY **R404A** VALUE BY THE APPROPRIATE VALUE BELOW:

R407A	R407C	R448A R449A	R507	R22
1.10	1.10	1.05	1.00	1.15

TYPICAL SYSTEM WIRING DIAGRAM

208-230/1/60 Unit

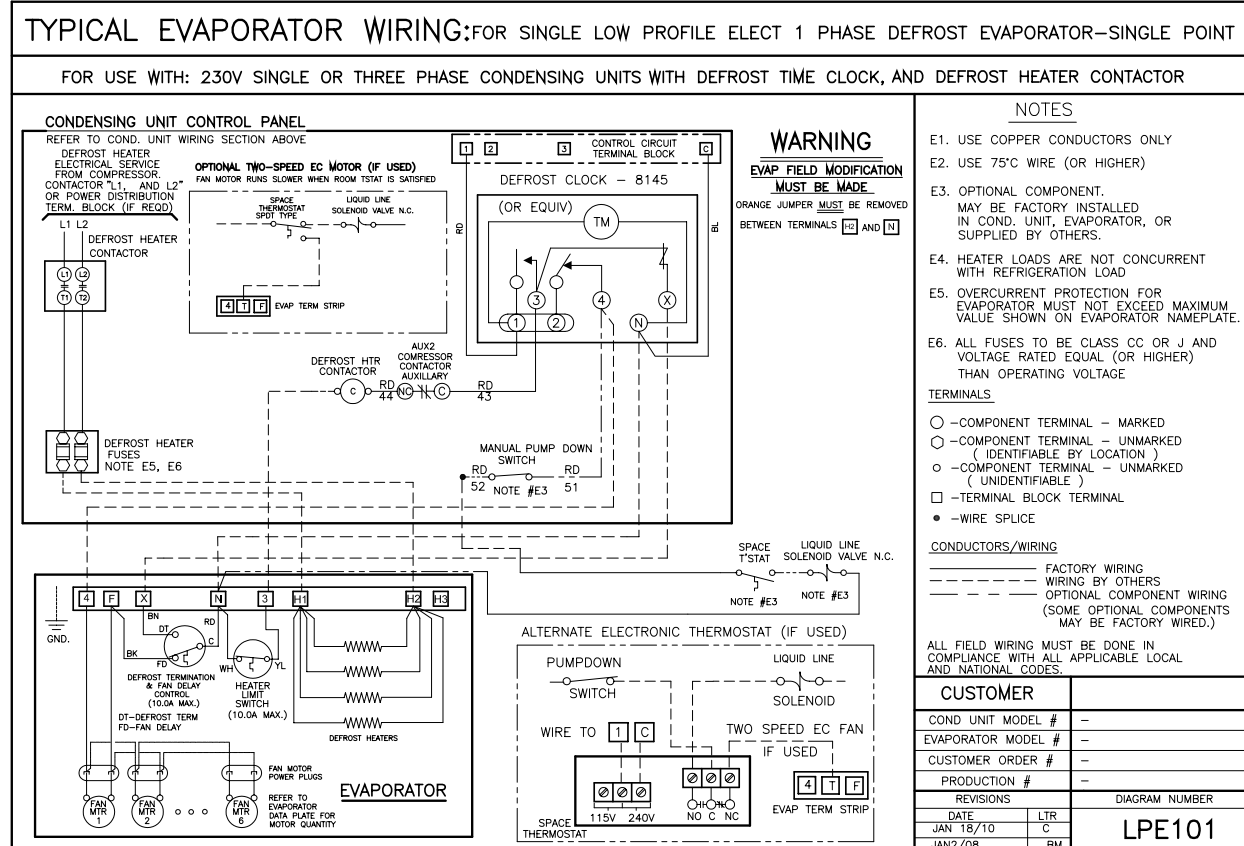
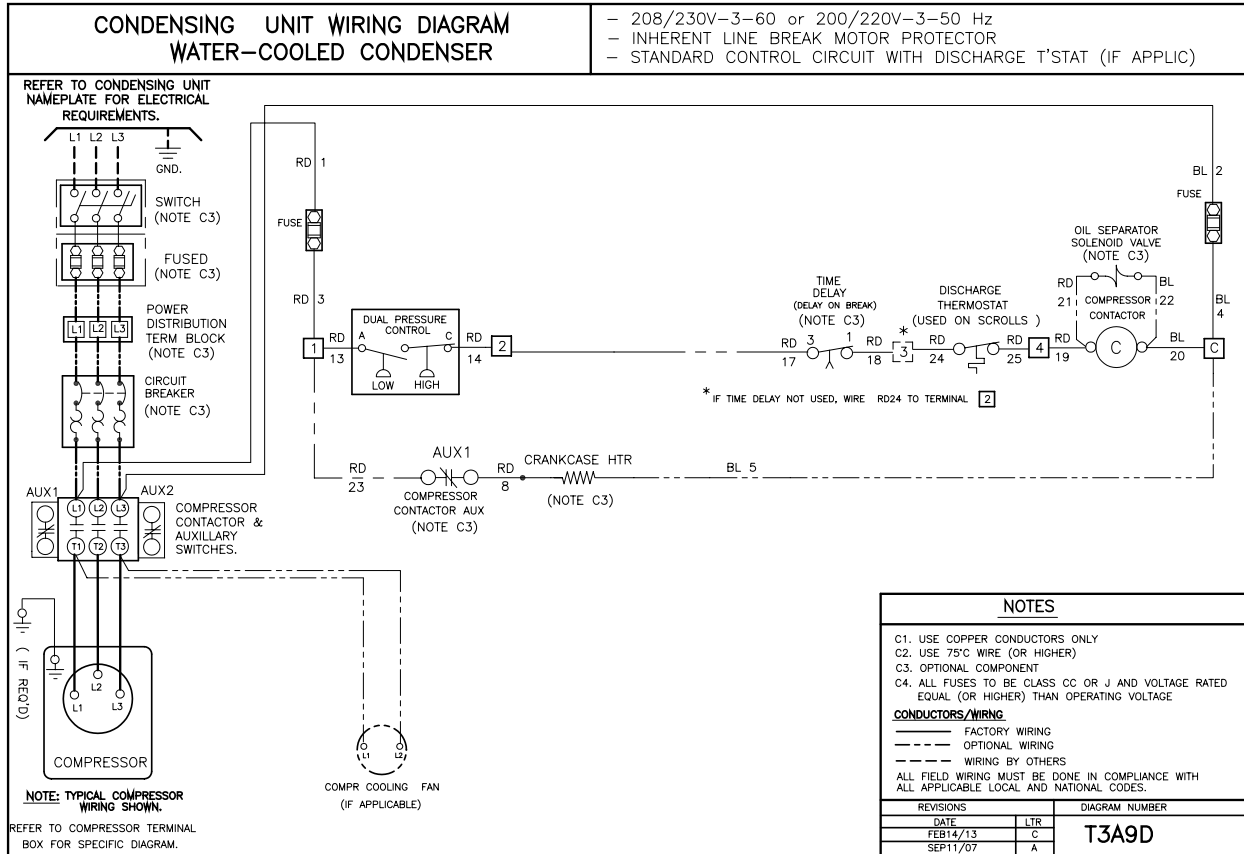
with Single Air Defrost Evaporator



TYPICAL SYSTEM WIRING DIAGRAM

208-230/3/60 Unit

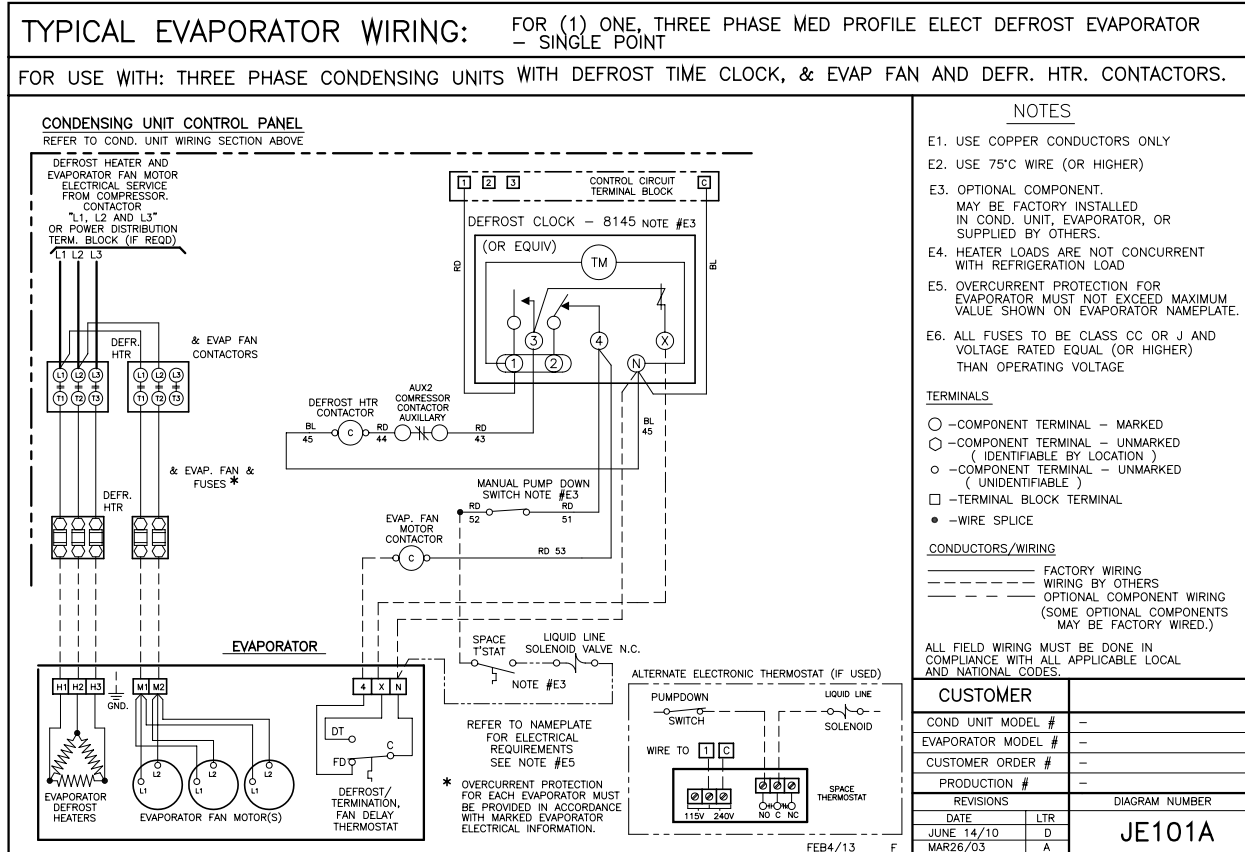
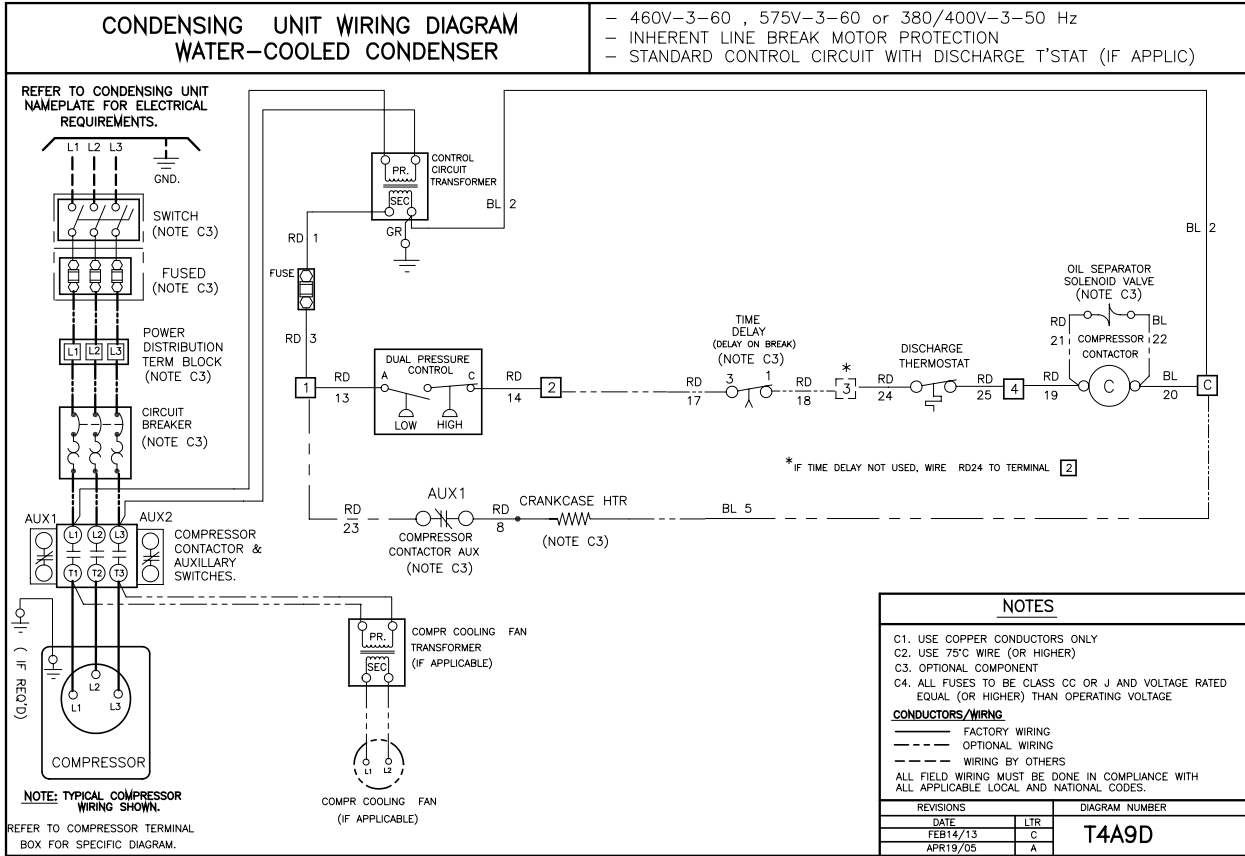
with Single Low Profile Electric Defrost Evaporator



TYPICAL SYSTEM WIRING DIAGRAM

460/3/60 or 575/3/60 Unit

with Single Low Profile Electric Defrost Evaporator





PRODUCT SUPPORT

web: www.t-rp.com/tx
email: rcu-wccu@t-rp.com
call: 1-844-893-3222 x523



TROUBLESHOOTING

email: troubleshooting@t-rp.com
call: 1-844-893-3222 x529



SERVICE PARTS

web: www.t-rp.com/parts
email: parts@t-rp.com
call: 1-844-893-3222 x504



WARRANTY

web: www.t-rp.com/warranty
email: warranty@t-rp.com
call: 1-844-893-3222 x507



ORDERS

email: orders@t-rp.com
call: 1-844-893-3222 x501



SHIPPING

email: shipping@t-rp.com
call: 1-844-893-3222 x503



Trenton Refrigeration
 Brantford, ON • Longview, TX
 1-800-463-9517 info@t-rp.com www.t-rp.com

